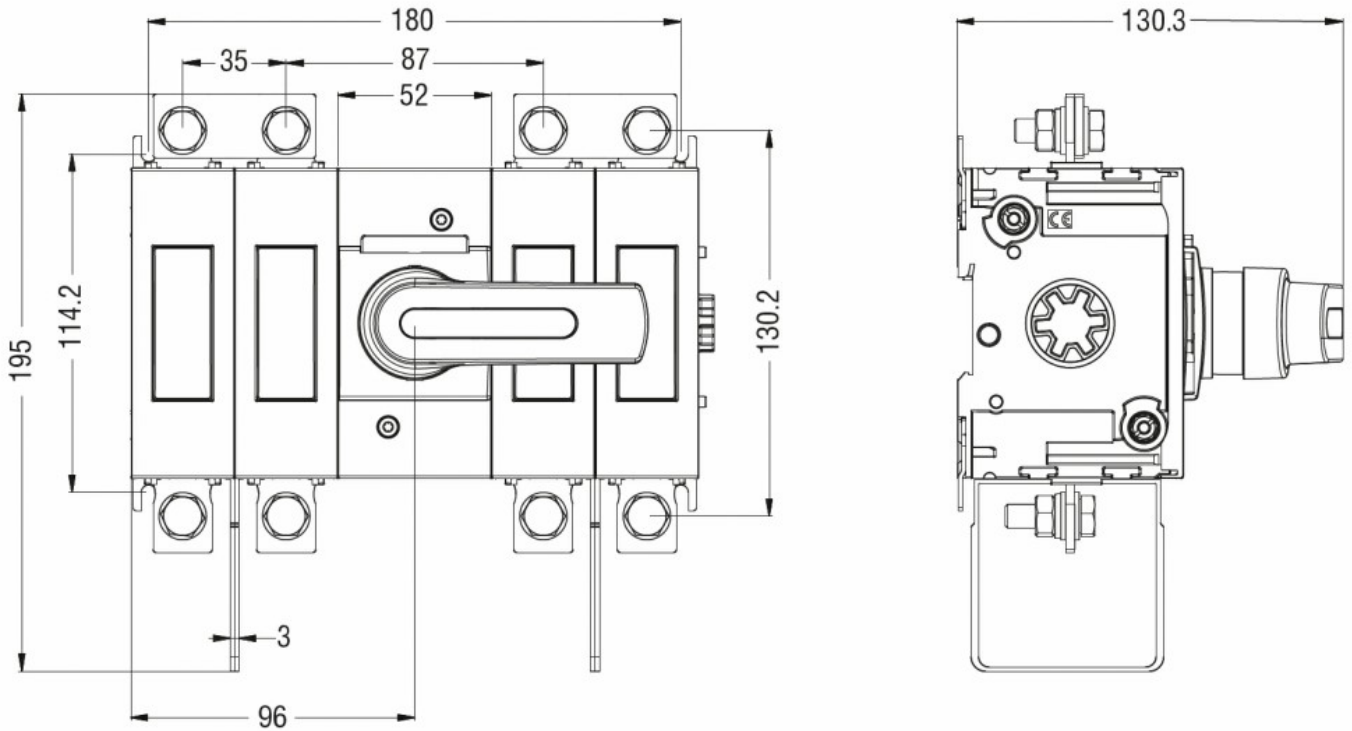


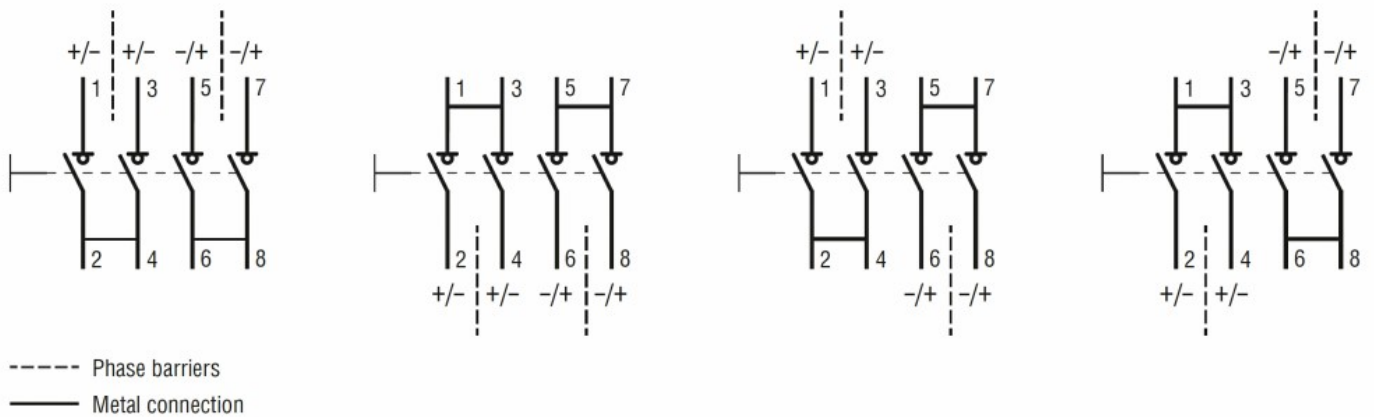


Product designation	Switch disconnecter		
Product type designation	GLD		
Number of poles	Nr.	4	
Operating voltage type	DC		
<b>Contact characteristics</b>			
IEC Conventional free air thermal current I <sub>th</sub>	A	100	
Rated insulation voltage U <sub>i</sub> IEC/EN	V	1500	
Operating current I <sub>e</sub>			
DC21B			
	600V	A	100
	800V	A	100
	1000V	A	100
	1200V	A	100
	1500V	A	100
DCPV1			
	Operating current I <sub>e</sub> 600V	A	100
	Operating current I <sub>e</sub> 800V	A	100
	Operating current I <sub>e</sub> 1200V	A	100
	Operating current I <sub>e</sub> 1500V	A	100
DCPV1			
	600V	A	100
	800V	A	100
	1200V	A	100
	1500V	A	100
<b>Mechanical features</b>			
Operating position	normal allowable	Vertical plan Any	
Fixing	Screw / DIN rail 35mm		
Terminals	type	M8 x 25	
Tightening torque for terminals	min	Nm	15
	max	Nm	22
	min	lbin	132
	max	lbin	194
Conductor section	IEC min	mm <sup>2</sup>	70
	IEC max	mm <sup>2</sup>	185
	AWG/kcmil min		00
	AWG/kcmil max		400
<b>Ambient conditions</b>			
Operating temperature	min	°C	-25

Storage temperature	max	°C	+55
	min	°C	-40
Max altitude	max	°C	+70
		m	3000
<b>Resistance &amp; Protection</b>			
Pollution degree	3		
<b>Dimensions</b>			



**Wiring diagrams**



**Certifications and compliance**

Compliance	IEC/EN/BS 60947-1
	IEC/EN/BS 60947-3
	UL98B
Certifications	CE

**ETIM classification**

ETIM 8.0

EC000216 -  
Switch  
disconnector