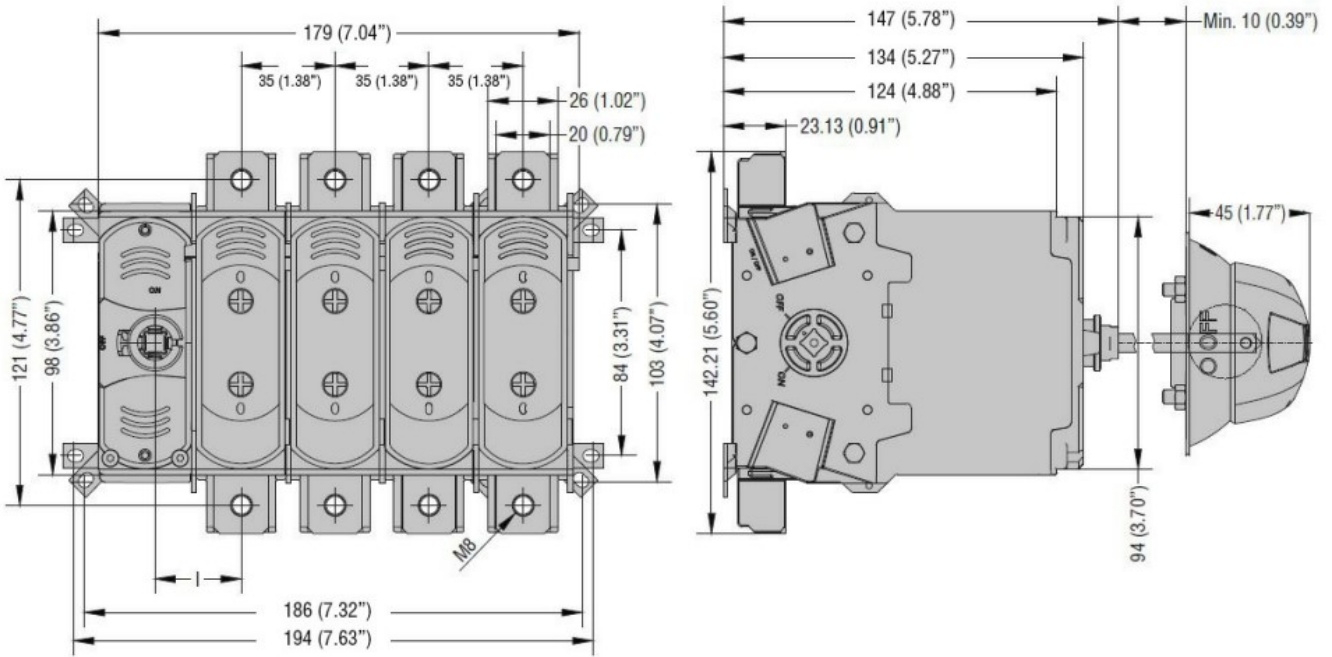


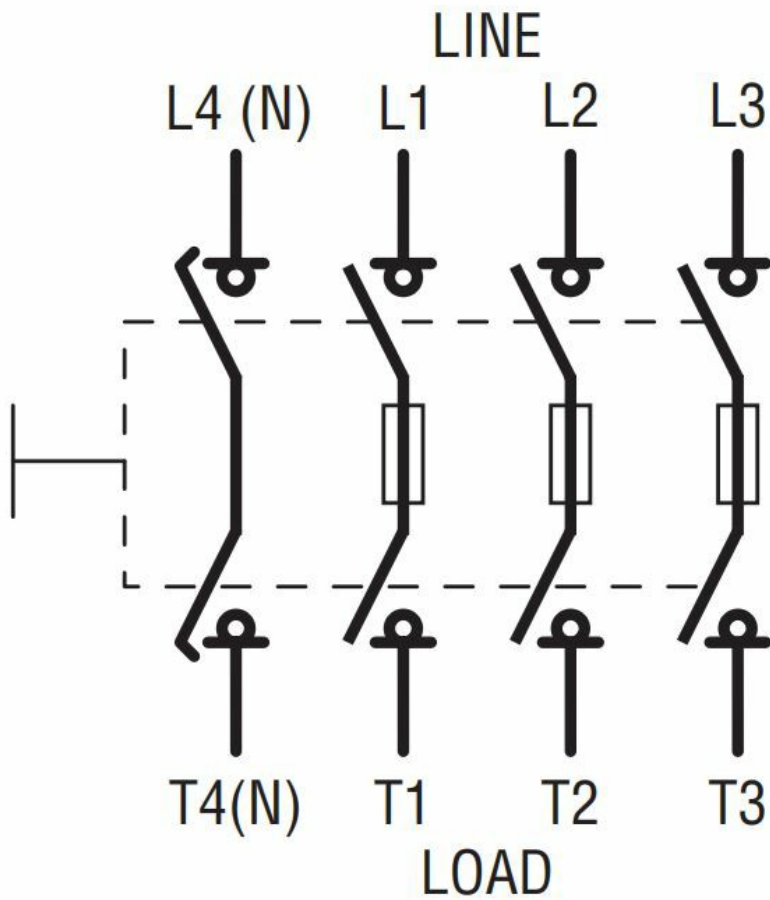


Product designation				Switch disconnecter with fuse
Product type designation				GEF
Type of fuse				NH
Number of poles	Nr.			4
Operating voltage type				AC
Contact characteristics				
IEC Conventional free air thermal current I _{th}	A			160
Rated insulation voltage U _i IEC/EN	V			1000
Rated impulse withstand voltage U _{imp}	kV			8
Operating current I _e				
AC21A	400V	A	160	
	500V	A	160	
AC22A	400V	A	160	
	500V	A	125	
AC23A	400V	A	160 (AC23B)	
	500V	A	125	
Power dissipation per pole max	W			11.2
Conditional short-circuit current (rms)	kA			100
Making capacity AC23A 400V	A			1600
Breaking capacity AC23A 400V	A			1280
Mechanical life	cycles			8000
Mechanical features				
Operating position	normal allowable			Vertical plan Any
Fixing				Screw
Terminals	type			Lug terminals or bars
	width	mm	25	
	height	mm	3	
	screw			M8
Tightening torque for terminals	max	Nm	6	
	max	lbin	53	
Weight			g	1600
UL technical data				
Operating voltage max			V	500
Ambient conditions				
Operating temperature	min	°C	-25	

Storage temperature	max	°C	55
	min	°C	-40
Max altitude	max	°C	70
		m	3000
Resistance & Protection			
Pollution degree	3		
Dimensions			



Wiring diagrams



Certifications and compliance

Compliance

IEC/EN/BS 60947-1
 IEC/EN/BS 60947-3

Certifications

CE
 UKCA

ETIM classification

ETIM 8.0

EC000216 -
 Switch
 disconnecter