



Product designation  
Product type designation  
Type

Solid state relay  
HS3C  
Three-phase (3  
controlled)

#### Input characteristics

Control voltage	4...32VDC
Operating voltage limits	

Operating voltage pick-up	V	4
Operating voltage drop-out	V	2

Input current at min...max voltage	mA	27...37
------------------------------------	----	---------

#### Operating times

Switching-on	Half cycle max
Switching-off	Half cycle max

#### Output characteristics

Static output type		SCR (silicon controlled rectifier)
Switching mode		Zero crossing
Rated operating voltage	VAC	48...600
Blocking voltage	V	1200
Operational frequency (min...max)	Hz	45...65
Rated operating current AC-51 (resistive load) at 40°C	A	50
Rated operating current AC-53 (motor load) at 40°C	A	15
Non repetitive surge peak on state current t=10ms	A	530
Off state leakage current	mA	1
On state output voltage drop	V	1.2
Critical rate of rise of off-state voltage dv/dt	V/μs	1000
Input - Output isolation	V	5000
Input - Output to metal base	V	5000
Output protection type		VDR
I <sup>2</sup> t	A <sup>2</sup> s	1404

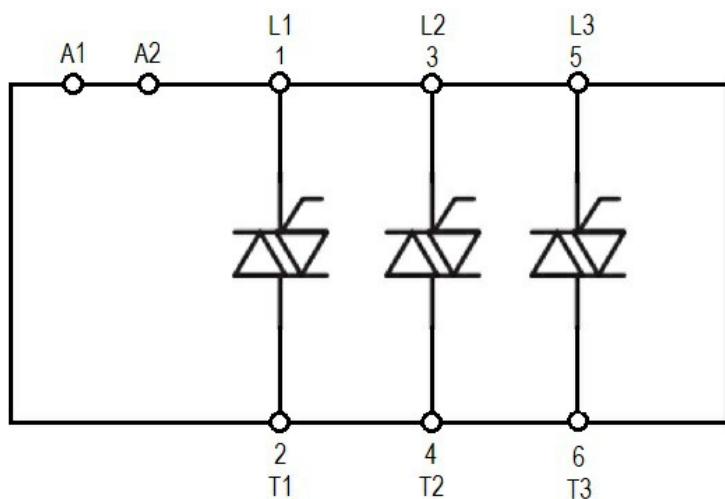
#### Terminal characteristics

Control terminals	Type	Screw
Terminals tool		Blade 3.5mm
Tightening torque control terminals	Nm	0.6Nm
	Ibin	5.3
Conductor section connectable (control terminals) with 1 or 2 wires min...max		
	AWG stranded	n° 30...14
	Flexible w/o lug	mm <sup>2</sup> 0.05...2
	Flexible c/w insulated spade lug	mm <sup>2</sup> 0.05...2
Load terminals	Type	Screw
Load terminals tool		PH2
Tightening torque load terminals	Nm	1.5

		Ibin	13.3
Conductor section connectable (load terminals) with 1 or 2 wires min...max			
	AWG stranded	n°	18...10
	Flexible w/o lug	mm2	1...6
	Flexible c/w insulated spade lug	mm2	1...16
Operating position			
	allowable	On vertical plane	
Fixing		Screw	
Ambient conditions			
Temperature			
	Operating temperature		
	min	°C	-40
	max	°C	+80
	Storage temperature		
	min	°C	-40
	max	°C	+130

## Dimensions

## Wiring diagrams



## Certifications and compliance

### Certifications

IEC/EN/BS 61000-6-2; IEC/EN/BS 61000-6-3

### ETIM classification

EC000066 - Power contactor, AC switching