



Product designation

Rotary cam
switches

Product type designation

GX40

General characteristics

Switching diagram

53 - Changeover
switch 3 poles - 2
speed motor
starting with
separate
windings

N° of elements

3

Mounting form

U - Front
mounting with
black handle

Contact characteristics

Rated insulation voltage U_i

IEC/EN V 690

UL/CSA V 600

Rated impulse withstand voltage U_{imp}

kV 6

Conventional free air thermal current I_{th}

IEC/EN A 40

UL/CSA A 40

Rated operational voltage

V 440

Rated operational impulse voltage

kV 4

Maximum fuse size for short-circuit protection I_n (gG)

10kA A 40

15kA A 35

25kA A 35

Rated short time current I_{cw}

1s kA 1000

Conductivity

10/5 mA/V

Operational current I_e IEC/EN

AC1/AC21A

A 40

AC15

110V A 25

220/230V A 22

380/400V A 12

660/690V A 2

Rated operational power in AC

Three-phase AC-3

220/230V kW 7.5

380/440V kW 15

500/690V kW 15

Single-phase AC-3

110V kW 2.2

	220/230V	kW	4.4
	380/440V	kW	7
<hr/>			
Three-phase AC23A	220/230V	kW	9
	380/440V	kW	18.5
	500/690V	kW	15
<hr/>			
Single-phase AC23A	110V	kW	3
	220/230V	kW	5.2
	380/440V	kW	7.5
<hr/>			
Rated operational current in DC			
DC21A			
	48V	A	40
	60V	A	40
	110V	A	6
	220V	A	0.8
	440V	A	0.25
<hr/>			
DC23A (poles in series)			
	24V	A	40 (1)
	48V	A	40 (1)
	60V	A	40 (3)
	110V	A	40 (3)
	220V	A	12 (4)
<hr/>			
DC13			
	24V	A	40
	48V	A	32
	60V	A	16
	110V	A	3
	220V	A	0.5
	440V	A	0.15
<hr/>			
Power dissipation		W	1.6
Mechanical features			
Terminals screw			M4
Tightening torque for terminals max		Nm	1.2
<hr/>			
Conductor size			
AWG - Rigid cable			
	min	AWG	16
	Max	AWG	8
<hr/>			
AWG - Flexible cable			
	min	AWG	16
	Max	AWG	10
<hr/>			
Conductor size (IEC) - Flexible cable			
	min	mm ²	1.5
	Max	mm ²	6
<hr/>			
Conductor size (IEC) - Rigid cable			
	min	mm ²	1.5
	Max	mm ²	10
<hr/>			
Mechanical life		cycles	1X10 ⁶
UL technical data			
Motor power for direct-on-line control			
for three-phase motor			
	120V	HP	5
	240V	HP	10
	480V	HP	15

	600V	HP	15
for single-phase motor			
	120V	HP	2
	240V	HP	5

Ambient conditions

Temperature

Operating temperature

min	°C	-25
max	°C	+55

Storage temperature

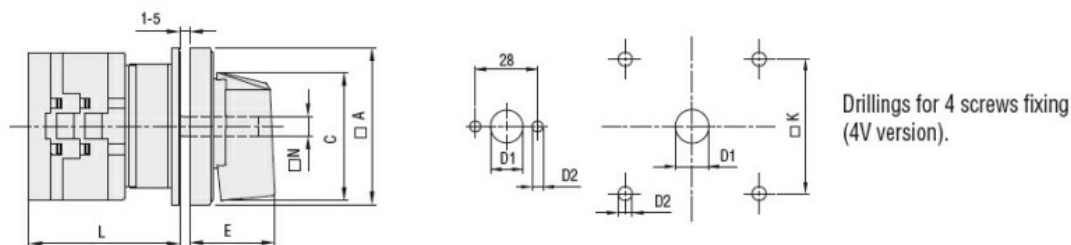
min	°C	-40
max	°C	+70

Resistance & Protection

Frontal IP degree IP65

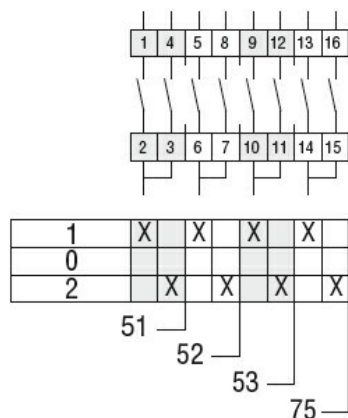
Terminals IP degree IP20

Dimensions



Series	Dimensions							L Number of elements											
	□A	C	∅D1	∅D2	E	□K	□N	1	2	3	4	5	6	7	8	9	10	11	12
GX16	48	39.5	12	5	26.5	36	6	43	51.5	60	68.5	77	85.5	94	102.5	111	119.5	128	136.5
GX20	48	39.5	12	5	26.5	36	6	43	51.5	60	68.5	77	85.5	94	102.5	111	119.5	128	136.5
GX32	65	53	14	5	34.5	48	7	51	63	75	85	99	111	123	135	147	159	171	183
GX40	65	53	14	5	34.5	48	7	51	63	75	85	99	111	123	135	147	159	171	183

Wiring diagrams



Certifications and compliance

Compliance

CSA C22.2 n° 14
IEC/EN/BS 60947-1
IEC/EN/BS 60947-3
IEC/EN/BS 60947-5-1
IEC/EN/BS 61058-1
UL60947-4-1

Certificates

cULus

EAC

ETIM classification

ETIM 8.0

EC001105 - Off-
load switch