

|   |                   |      |      |   |
|---|-------------------|------|------|---|
| Product designation                                       |                   |      |      | Rotary cam switches   |
| Product type designation                                  |                   |      |      | GX20  |
| <b>General characteristics</b>                            |                   |      |      |   |
| Switching diagram   |                   |      |      | 86 - Multi-step 1-2-3 2 poles   |
| N° of elements  |                   |      |      | 3   |
| Mounting form   |                   |      |      | U47 - Snap on front mounting with black handle for hole diam. 22mm fixing |
| <b>Contact characteristics</b>                            |                   |      |      |   |
| Rated insulation voltage $U_i$                            | IEC/EN            | V    | 690  |   |
|   | UL/CSA            | V    | 600  |   |
| Rated impulse withstand voltage $U_{imp}$                 |                   |      | kV   | 6   |
| Conventional free air thermal current $I_{th}$            | IEC/EN            | A    | 20   |   |
|   | UL/CSA            | A    | 15   |   |
| Rated operational voltage                                 |                   |      | V    | 440   |
| Rated operational impulse voltage                         |                   |      | kV   | 4   |
| Maximum fuse size for short-circuit protection $I_n$ (gG) | 10kA              | A    | 20   |   |
|   | 15kA              | A    | 20   |   |
|   | 25kA              | A    | 20   |   |
| Rated short time current $I_{cw}$                         |                   |      | 1s   | kA  |
|   |                   |      |      | 250   |
| Conductivity  |                   |      |      | 10/5 mA/V   |
| Operational current $I_e$ IEC/EN                          | AC1/AC21A         |      | A    | 20  |
|   | AC15              |      |      |   |
|   | 110V              | A    | 10   |   |
|   | 220/230V          | A    | 8    |   |
|   | 380/400V          | A    | 6    |   |
|   | 660/690V          | A    | 1.5  |   |
| Rated operational power in AC                             | Three-phase AC-3  |      |      |   |
|   | 220/230V          | kW   | 3.7  |   |
|   | 380/440V          | kW   | 5.5  |   |
|   | 500/690V          | kW   | 5.5  |   |
|   | Single-phase AC-3 |      |      |   |
|   | 110V              | kW   | 0.75 |   |
|   | 220/230V          | kW   | 1.8  |   |
|   | 380/440V          | kW   | 3    |   |
|   | Three-phase AC23A |      |      |   |
|   | 220/230V          | kW   | 4    |   |
|   | 380/440V          | kW   | 7.5  |   |
|   | 500/690V          | kW   | 7.5  |   |
| Single-phase AC23A  |                   |      |      |   |
| 110V  | kW                | 0.75 |      |   |
| 220/230V  | kW                | 2.2  |      |   |
| 380/440V  | kW                | 3.5  |      |   |

Rated operational current in DC

DC21A

|      |   |      |
|------|---|------|
| 48V  | A | 20   |
| 60V  | A | 20   |
| 110V | A | 4    |
| 220V | A | 0.6  |
| 440V | A | 0.25 |

DC23A (poles in series)

|      |   |        |
|------|---|--------|
| 24V  | A | 20 (1) |
| 48V  | A | 20 (2) |
| 60V  | A | 20 (3) |
| 110V | A | 10 (3) |
| 220V | A | 8 (4)  |

DC13

|      |   |      |
|------|---|------|
| 24V  | A | 20   |
| 48V  | A | 16   |
| 60V  | A | 12   |
| 110V | A | 1    |
| 220V | A | 0.4  |
| 440V | A | 0.15 |

Power dissipation

W 0.6

**Mechanical features**

Terminals screw

M3

Tightening torque for terminals max

Nm 0.8

Conductor size

AWG - Rigid cable

|     |     |    |
|-----|-----|----|
| min | AWG | 20 |
| Max | AWG | 12 |

AWG - Flexible cable

|     |     |    |
|-----|-----|----|
| min | AWG | 20 |
| Max | AWG | 12 |

Conductor size (IEC) - Flexible cable

|     |                 |     |
|-----|-----------------|-----|
| min | mm <sup>2</sup> | 0.5 |
| Max | mm <sup>2</sup> | 2.5 |

Conductor size (IEC) - Rigid cable

|     |                 |     |
|-----|-----------------|-----|
| min | mm <sup>2</sup> | 0.5 |
| Max | mm <sup>2</sup> | 2.5 |

Mechanical life

cycles 1X10<sup>6</sup>

**UL technical data**

Motor power for direct-on-line control

for three-phase motor

|      |    |     |
|------|----|-----|
| 120V | HP | 1.5 |
| 240V | HP | 3   |
| 480V | HP | 5   |
| 600V | HP | 5   |

for single-phase motor

|      |    |      |
|------|----|------|
| 120V | HP | 0.75 |
| 240V | HP | 1.5  |

**Ambient conditions**

Temperature

Operating temperature

|     |    |     |
|-----|----|-----|
| min | °C | -25 |
| max | °C | +55 |

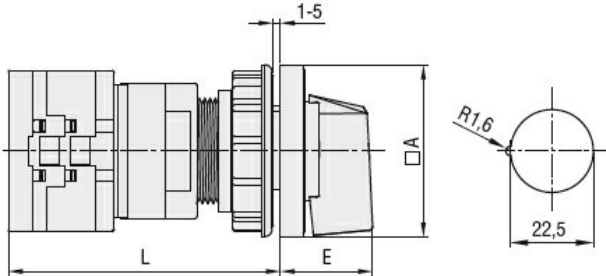
Storage temperature

|     |    |     |
|-----|----|-----|
| min | °C | -40 |
| max | °C | +70 |

**Resistance & Protection**

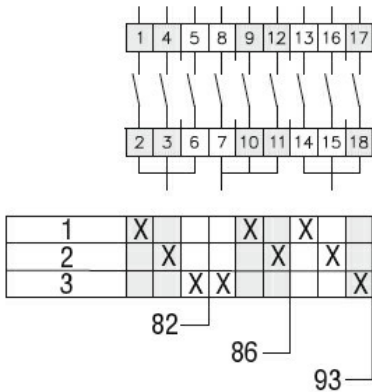
|                     |      |
|---------------------|------|
| Frontal IP degree   | IP65 |
| Terminals IP degree | IP20 |

**Dimensions**



| Series      | Dimensions |      | L    |      |       |       |
|-------------|------------|------|------|------|-------|-------|
|             | □A         | E    | 1    | 2    | 3...8 |       |
| <b>GX16</b> | 48         | 26.5 | 64.9 | 73.4 | 81.9  | 124.4 |
| <b>GX20</b> | 48         | 26.5 | 64.9 | 73.4 | 81.9  | 124.4 |

**Wiring diagrams**



**Certifications and compliance**

**Compliance**

- CSA C22.2 n° 14
- IEC/EN/BS 60947-1
- IEC/EN/BS 60947-3
- IEC/EN/BS 60947-5-1
- IEC/EN/BS 61058-1
- UL60947-4-1

**Certificates**

- cULus
- EAC

**ETIM classification**

ETIM 8.0

EC001029 -  
Selector switch,  
complete