



Product designation

Rotary cam switches

Product type designation

GX20

General characteristics

Switching diagram

03 - ON/OFF spring return switch 3 poles

N° of elements

2

Mounting form

U12 - Front mounting without front plate with key operation for hole diam. 22mm fixing

Contact characteristics

Rated insulation voltage U_i

IEC/EN V 690

UL/CSA V 600

Rated impulse withstand voltage U_{imp}

kV 6

Conventional free air thermal current I_{th}

IEC/EN A 20

UL/CSA A 15

Rated operational voltage

V 440

Rated operational impulse voltage

kV 4

Maximum fuse size for short-circuit protection I_n (gG)

10kA A 20

15kA A 20

25kA A 20

Rated short time current I_{cw}

1s kA 250

Conductivity

10/5 mA/V

Operational current I_e IEC/EN

AC1/AC21A

A 20

AC15

110V A 10

220/230V A 8

380/400V A 6

660/690V A 1.5

Rated operational power in AC

Three-phase AC-3

220/230V kW 3.7

380/440V kW 5.5

500/690V kW 5.5

Single-phase AC-3

110V kW 0.75

| | | | |
|--|----------|-----------------|-------------------|
| | 220/230V | kW | 1.8 |
| | 380/440V | kW | 3 |
| <hr/> | | | |
| Three-phase AC23A | 220/230V | kW | 4 |
| | 380/440V | kW | 7.5 |
| | 500/690V | kW | 7.5 |
| <hr/> | | | |
| Single-phase AC23A | 110V | kW | 0.75 |
| | 220/230V | kW | 2.2 |
| | 380/440V | kW | 3.5 |
| <hr/> | | | |
| Rated operational current in DC | | | |
| DC21A | 48V | A | 20 |
| | 60V | A | 20 |
| | 110V | A | 4 |
| | 220V | A | 0.6 |
| | 440V | A | 0.25 |
| <hr/> | | | |
| DC23A (poles in series) | 24V | A | 20 (1) |
| | 48V | A | 20 (2) |
| | 60V | A | 20 (3) |
| | 110V | A | 10 (3) |
| | 220V | A | 8 (4) |
| <hr/> | | | |
| DC13 | 24V | A | 20 |
| | 48V | A | 16 |
| | 60V | A | 12 |
| | 110V | A | 1 |
| | 220V | A | 0.4 |
| | 440V | A | 0.15 |
| <hr/> | | | |
| Power dissipation | | W | 0.6 |
| Mechanical features | | | |
| Terminals screw | | | M3 |
| Tightening torque for terminals max | | Nm | 0.8 |
| <hr/> | | | |
| Conductor size | | | |
| AWG - Rigid cable | min | AWG | 20 |
| | Max | AWG | 12 |
| <hr/> | | | |
| AWG - Flexible cable | min | AWG | 20 |
| | Max | AWG | 12 |
| <hr/> | | | |
| Conductor size (IEC) - Flexible cable | min | mm ² | 0.5 |
| | Max | mm ² | 2.5 |
| <hr/> | | | |
| Conductor size (IEC) - Rigid cable | min | mm ² | 0.5 |
| | Max | mm ² | 2.5 |
| <hr/> | | | |
| Mechanical life | | cycles | 1X10 ⁶ |
| UL technical data | | | |
| Motor power for direct-on-line control | | | |
| for three-phase motor | 120V | HP | 1.5 |
| | 240V | HP | 3 |
| | 480V | HP | 5 |

| | | | |
|------------------------|------|----|------|
| | 600V | HP | 5 |
| for single-phase motor | | | |
| | 120V | HP | 0.75 |
| | 240V | HP | 1.5 |

Ambient conditions

Temperature

Operating temperature

| | | |
|-----|----|-----|
| min | °C | -25 |
| max | °C | +55 |

Storage temperature

| | | |
|-----|----|-----|
| min | °C | -40 |
| max | °C | +70 |

Resistance & Protection

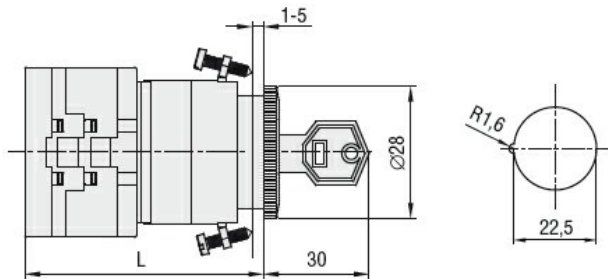
Frontal IP degree

IP65

Terminals IP degree

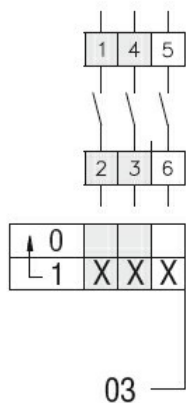
IP20

Dimensions



| Series | L | | | |
|-------------|----|------|-------|-------|
| | 1 | 2 | 3...8 | |
| GX16 | 54 | 62.5 | 71 | 113.4 |
| GX20 | 54 | 62.5 | 71 | 113.4 |

Wiring diagrams



Certifications and compliance

Compliance

- CSA C22.2 n° 14
- IEC/EN/BS 60947-1
- IEC/EN/BS 60947-3
- IEC/EN/BS 60947-5-1
- IEC/EN/BS 61058-1
- UL60947-4-1

Certificates

cULus
EAC

ETIM classification

ETIM 8.0

EC001029 -
Selector switch,
complete