

Product designation				Rotary cam switches		
Product type designation				GX16		
General characteristics						
Switching diagram				52 - Changeover switch 2 poles		
N° of elements				2		
Mounting form				U47 - Snap on front mounting with black handle for hole diam. 22mm fixing		
Contact characteristics						
Rated insulation voltage U_i	IEC/EN	V	690			
	UL/CSA	V	600			
Rated impulse withstand voltage U_{imp}		kV	6			
Conventional free air thermal current I_{th}	IEC/EN	A	16			
	UL/CSA	A	12			
Rated operational voltage		V	440			
Rated operational impulse voltage		kV	4			
Maximum fuse size for short-circuit protection I_n (gG)	10kA	A	16			
	15kA	A	16			
	25kA	A	16			
Rated short time current I_{cw}		1s	kA	250		
				10/5 mA/V		
Conductivity				10/5 mA/V		
Operational current I_e IEC/EN	AC1/AC21A			A		
	AC15					
Rated operational power in AC	Three-phase AC-3			110V	A	10
				220/230V	A	8
				380/400V	A	4
				660/690V	A	1.5
	Single-phase AC-3			110V	kW	0.55
				220/230V	kW	1.5
				380/440V	kW	2.2
	Three-phase AC23A			220/230V	kW	3.7
				380/440V	kW	6.5
				500/690V	kW	7.5
Single-phase AC23A			110V	kW	0.75	
			220/230V	kW	1.8	
			380/440V	kW	3	

Rated operational current in DC
DC21A

48V	A	16
60V	A	16
110V	A	4
220V	A	0.6
440V	A	0.25

DC23A (poles in series)

24V	A	16 (1)
48V	A	16 (2)
60V	A	16 (3)
110V	A	10 (3)
220V	A	7 (4)

DC13

24V	A	16
48V	A	14
60V	A	10
110V	A	1
220V	A	0.4
440V	A	0.15

Power dissipation	W	0.6
-------------------	---	-----

Mechanical features

Terminals screw		3M
-----------------	--	----

Tightening torque for terminals max	Nm	0.5
-------------------------------------	----	-----

Conductor size

AWG - Rigid cable

min	AWG	20
Max	AWG	12

AWG - Flexible cable

min	AWG	20
Max	AWG	12

Conductor size (IEC) - Flexible cable

min	mm ²	0.5
Max	mm ²	2.5

Conductor size (IEC) - Rigid cable

min	mm ²	0.5
Max	mm ²	2.5

Mechanical life	cycles	1X10 ⁶
-----------------	--------	-------------------

UL technical data

Motor power for direct-on-line control

for three-phase motor

120V	HP	1.5
240V	HP	3
480V	HP	5
600V	HP	5

for single-phase motor

120V	HP	0.75
240V	HP	1

Ambient conditions

Temperature

Operating temperature

min	°C	-25
max	°C	+55

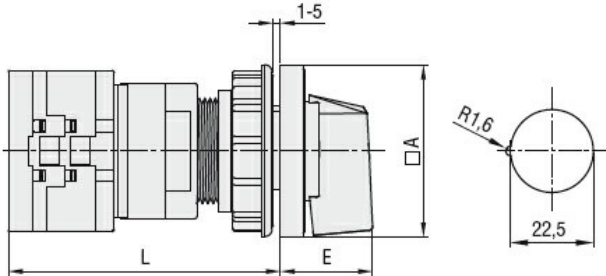
Storage temperature

min	°C	-40
max	°C	+70

Resistance & Protection

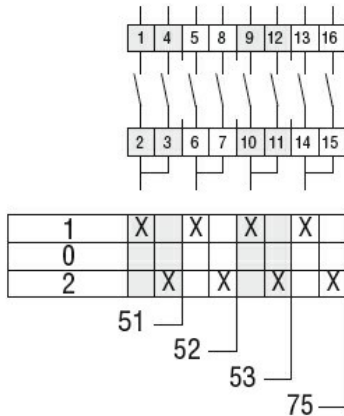
Frontal IP degree	IP65
Terminals IP degree	IP20

Dimensions



Series	Dimensions		L			
	□A	E	1	2	3...8	
GX16	48	26.5	64.9	73.4	81.9	124.4
GX20	48	26.5	64.9	73.4	81.9	124.4

Wiring diagrams



Certifications and compliance

Compliance

CSA C22.2 n° 14
IEC/EN/BS 60947-1
IEC/EN/BS 60947-3
IEC/EN/BS 60947-5-1
IEC/EN/BS 61058-1
UL60947-4-1

Certificates

cULus
EAC

ETIM classification

ETIM 8.0

EC001029 -
Selector switch,
complete