

Product designation				Rotary cam switches	
Product type designation				7GN25	
General characteristics					
Switching diagram				56 - Changeover switch without 0 3 poles	
N° of elements				3	
Mounting form				U12 - Front mounting without front plate with key operation for hole diam. 22mm fixing	
Contact characteristics					
Rated insulation voltage U_i	IEC/EN	V	690		
	UL/CSA	V	600		
Rated impulse withstand voltage U_{imp}			kV	6	
Conventional free air thermal current I_{th}	IEC/EN	A	25		
	UL/CSA	A	30		
			V	480	
Rated operational voltage			kV	4	
Maximum fuse size for short-circuit protection I_n (gG)	10kA	A	25		
	15kA	A	25		
	25kA	A	25		
			1s	kA	400
Rated short time current I_{cw}				10/5 mA/V	
Conductivity					
Operational current I_e IEC/EN	AC1/AC21A		A	25	
	AC15				
		110V	A	16	
		220/230V	A	12	
		380/400V	A	8	
		660/690V	A	2	
Rated operational power in AC	Three-phase AC-3				
			220/230V	kW	5.5
			380/440V	kW	7.5
			500/690V	kW	7.5
	Single-phase AC-3				
			110V	kW	1.5
			220/230V	kW	3
			380/440V	kW	5.5
	Three-phase AC23A				
			220/230V	kW	6.5
			380/440V	kW	11
			500/690V	kW	11
Single-phase AC23A					
		110V	kW	1.5	

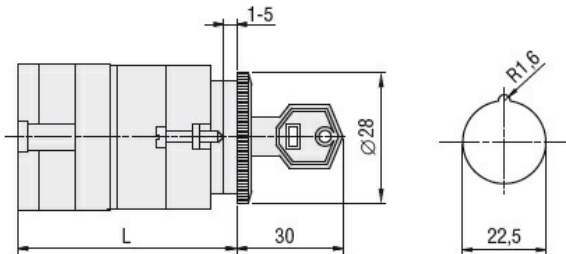
	220/230V	kW	3.7
	380/440V	kW	5.5
Rated operational current in DC			
DC21A			
	48V	A	25
	60V	A	25
	110V	A	4
	220V	A	0.7
DC23A (poles in series)			
	24V	A	25 (1)
	48V	A	25 (2)
	60V	A	25 (3)
	110V	A	12 (3)
	220V	A	10 (4)
DC13			
	24V	A	25
	48V	A	20
	60V	A	16
	110V	A	1.5
	220V	A	0.4
Power dissipation		W	1.1
Mechanical features			
Terminals screw			M3.5
Tightening torque for terminals max		Nm	0.8
Conductor size			
AWG - Rigid cable			
	min	AWG	20
	Max	AWG	10
AWG - Flexible cable			
	min	AWG	20
	Max	AWG	12
Conductor size (IEC) - Flexible cable			
	min	mm ²	0.5
	Max	mm ²	4
Conductor size (IEC) - Rigid cable			
	min	mm ²	0.5
	Max	mm ²	4
Mechanical life		cycles	5x10 ⁶
UL technical data			
Motor power for direct-on-line control			
for three-phase motor			
	120V	HP	3
	240V	HP	5
	480V	HP	10
	600V	HP	15
for single-phase motor			
	120V	HP	1.5
	240V	HP	3
Ambient conditions			
Temperature			
Operating temperature			
	min	°C	-25
	max	°C	+55
Storage temperature			

min	°C	-40
max	°C	+70

Resistance & Protection

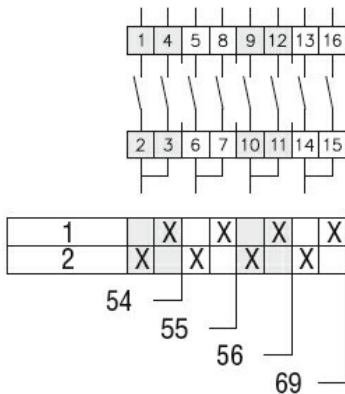
Frontal IP degree	IP40
Terminals IP degree	IP00

Dimensions



Series	L			
	1	2	3...8	
7GN12	47	56.7	66.4	114.9
7GN20	47	56.7	66.4	114.9
7GN25	51.4	65	78.6	146.6

Wiring diagrams



Certifications and compliance

Compliance

CSA C22.2 n° 14
IEC/EN/BS 60947-1
IEC/EN/BS 60947-3
IEC/EN/BS 60947-5-1
UL60947-4-1

Certificates

cCSAus
EAC
UL

ETIM classification

ETIM 8.0

EC001029 -
Selector switch,
complete