

Product designation				Rotary cam switches		
Product type designation				7GN25		
General characteristics						
Switching diagram				55 - Changeover switch without 0 2 poles		
N° of elements				2		
Mounting form				U11 - Front mounting with black handle without front plate for hole diam. 22mm fixing		
Contact characteristics						
Rated insulation voltage U_i	IEC/EN	V	690			
	UL/CSA	V	600			
Rated impulse withstand voltage U_{imp}		kV	6			
Conventional free air thermal current I_{th}	IEC/EN	A	25			
	UL/CSA	A	30			
Rated operational voltage		V	480			
Rated operational impulse voltage		kV	4			
Maximum fuse size for short-circuit protection I_n (gG)	10kA	A	25			
	15kA	A	25			
	25kA	A	25			
Rated short time current I_{cw}		1s	kA	400		
				10/5 mA/V		
Conductivity				10/5 mA/V		
Operational current I_e IEC/EN	AC1/AC21A			A 25		
	AC15					
Rated operational power in AC				110V	A	16
				220/230V	A	12
				380/400V	A	8
				660/690V	A	2
	Three-phase AC-3			220/230V	kW	5.5
				380/440V	kW	7.5
				500/690V	kW	7.5
	Single-phase AC-3			110V	kW	1.5
				220/230V	kW	3
				380/440V	kW	5.5
Three-phase AC23A			220/230V	kW	6.5	
			380/440V	kW	11	
			500/690V	kW	11	
Single-phase AC23A			110V	kW	1.5	

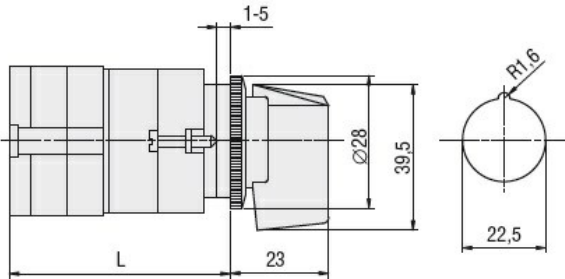
	220/230V	kW	3.7
	380/440V	kW	5.5
Rated operational current in DC			
DC21A			
	48V	A	25
	60V	A	25
	110V	A	4
	220V	A	0.7
DC23A (poles in series)			
	24V	A	25 (1)
	48V	A	25 (2)
	60V	A	25 (3)
	110V	A	12 (3)
	220V	A	10 (4)
DC13			
	24V	A	25
	48V	A	20
	60V	A	16
	110V	A	1.5
	220V	A	0.4
Power dissipation		W	1.1
Mechanical features			
Terminals screw			M3.5
Tightening torque for terminals max		Nm	0.8
Conductor size			
AWG - Rigid cable			
	min	AWG	20
	Max	AWG	10
AWG - Flexible cable			
	min	AWG	20
	Max	AWG	12
Conductor size (IEC) - Flexible cable			
	min	mm ²	0.5
	Max	mm ²	4
Conductor size (IEC) - Rigid cable			
	min	mm ²	0.5
	Max	mm ²	4
Mechanical life		cycles	5x10 ⁶
UL technical data			
Motor power for direct-on-line control			
for three-phase motor			
	120V	HP	3
	240V	HP	5
	480V	HP	10
	600V	HP	15
for single-phase motor			
	120V	HP	1.5
	240V	HP	3
Ambient conditions			
Temperature			
Operating temperature			
	min	°C	-25
	max	°C	+55
Storage temperature			

min	°C	-40
max	°C	+70

Resistance & Protection

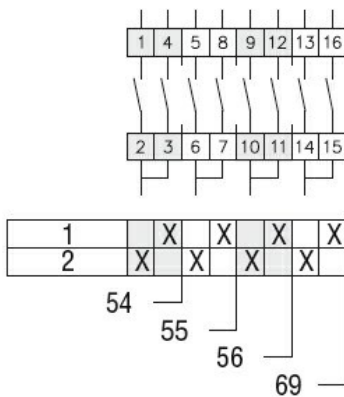
Frontal IP degree	IP40
Terminals IP degree	IP00

Dimensions



Series	L			
	1	2	3...8	
7GN12	47	56.7	66.4	114.9
7GN20	47	56.7	66.4	114.9
7GN25	51.4	65	78.6	146.6

Wiring diagrams



Certifications and compliance

Compliance

CSA C22.2 n° 14
IEC/EN/BS 60947-1
IEC/EN/BS 60947-3
IEC/EN/BS 60947-5-1
UL60947-4-1

Certificates

cCSAus
EAC
UL

ETIM classification

ETIM 8.0

EC001029 -
Selector switch,
complete