

Product designation				Rotary cam switches	
Product type designation				7GN25	
General characteristics					
Switching diagram				52 - Changeover switch 2 poles	
N° of elements				2	
Mounting form				U12 - Front mounting without front plate with key operation for hole diam. 22mm fixing	
Contact characteristics					
Rated insulation voltage U_i	IEC/EN	V	690		
	UL/CSA	V	600		
Rated impulse withstand voltage U_{imp}			kV	6	
Conventional free air thermal current I_{th}	IEC/EN	A	25		
	UL/CSA	A	30		
Rated operational voltage			V	480	
Rated operational impulse voltage			kV	4	
Maximum fuse size for short-circuit protection I_n (gG)	10kA	A	25		
	15kA	A	25		
	25kA	A	25		
Rated short time current I_{cw}			1s	kA	
				400	
Conductivity				10/5 mA/V	
Operational current I_e IEC/EN	AC1/AC21A		A	25	
	AC15				
		110V	A	16	
		220/230V	A	12	
		380/400V	A	8	
		660/690V	A	2	
Rated operational power in AC	Three-phase AC-3				
			220/230V	kW	5.5
			380/440V	kW	7.5
			500/690V	kW	7.5
	Single-phase AC-3				
			110V	kW	1.5
			220/230V	kW	3
			380/440V	kW	5.5
	Three-phase AC23A				
			220/230V	kW	6.5
			380/440V	kW	11
			500/690V	kW	11
Single-phase AC23A					
		110V	kW	1.5	
		220/230V	kW	3.7	

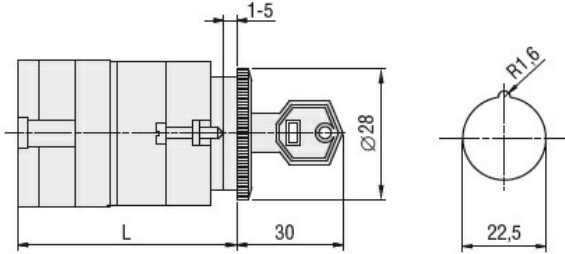
		380/440V	kW	5.5
Rated operational current in DC				
DC21A				
	48V	A	25	
	60V	A	25	
	110V	A	4	
	220V	A	0.7	
DC23A (poles in series)				
	24V	A	25 (1)	
	48V	A	25 (2)	
	60V	A	25 (3)	
	110V	A	12 (3)	
	220V	A	10 (4)	
DC13				
	24V	A	25	
	48V	A	20	
	60V	A	16	
	110V	A	1.5	
	220V	A	0.4	
Power dissipation			W	1.1
Mechanical features				
Terminals screw				M3.5
Tightening torque for terminals max			Nm	0.8
Conductor size				
AWG - Rigid cable				
	min	AWG	20	
	Max	AWG	10	
AWG - Flexible cable				
	min	AWG	20	
	Max	AWG	12	
Conductor size (IEC) - Flexible cable				
	min	mm ²	0.5	
	Max	mm ²	4	
Conductor size (IEC) - Rigid cable				
	min	mm ²	0.5	
	Max	mm ²	4	
Mechanical life			cycles	5x10 ⁶
UL technical data				
Motor power for direct-on-line control				
for three-phase motor				
	120V	HP	3	
	240V	HP	5	
	480V	HP	10	
	600V	HP	15	
for single-phase motor				
	120V	HP	1.5	
	240V	HP	3	
Ambient conditions				
Temperature				
Operating temperature				
	min	°C	-25	
	max	°C	+55	
Storage temperature				
	min	°C	-40	

max °C +70

Resistance & Protection

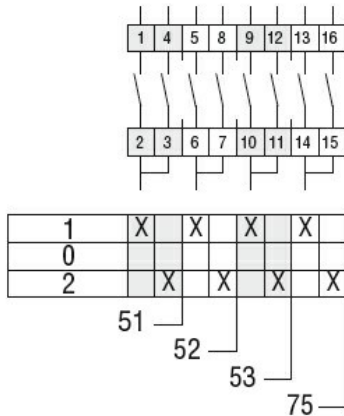
Frontal IP degree	IP40
Terminals IP degree	IP00

Dimensions



Series	L			
	1	2	3...8	
7GN12	47	56.7	66.4	114.9
7GN20	47	56.7	66.4	114.9
7GN25	51.4	65	78.6	146.6

Wiring diagrams



Certifications and compliance

Compliance

CSA C22.2 n° 14
IEC/EN/BS 60947-1
IEC/EN/BS 60947-3
IEC/EN/BS 60947-5-1
UL60947-4-1

Certificates

cCSAus
EAC
UL

ETIM classification

ETIM 8.0

EC001029 -
Selector switch,
complete