

Product designation				Rotary cam switches	
Product type designation				7GN12	
<b>General characteristics</b>					
Switching diagram				52 - Changeover switch 2 poles	
N° of elements				2	
Mounting form				U12 - Front mounting without front plate with key operation for hole diam. 22mm fixing	
<b>Contact characteristics</b>					
Rated insulation voltage $U_i$	IEC/EN	V	690		
	UL/CSA	V	600		
Rated impulse withstand voltage $U_{imp}$			kV	6	
Conventional free air thermal current $I_{th}$	IEC/EN	A	16		
	UL/CSA	A	15		
Rated operational voltage			V	480	
Rated operational impulse voltage			kV	4	
Maximum fuse size for short-circuit protection $I_n$ (gG)	10kA	A	16		
	15kA	A	10		
	25kA	A	10		
Rated short time current $I_{cw}$	1s	kA	200		
				10/5 mA/V	
Conductivity				10/5 mA/V	
Operational current $I_e$ IEC/EN	AC1/AC21A		A	16	
	AC15				
		110V	A	10	
		220/230V	A	8	
		380/400V	A	4	
		660/690V	A	1.5	
Rated operational power in AC	Three-phase AC-3				
			220/230V	kW	2.5
			380/440V	kW	4
			500/690V	kW	5.5
	Single-phase AC-3				
			110V	kW	0.8
			220/230V	kW	1.5
			380/440V	kW	2.2
	Three-phase AC23A				
			220/230V	kW	3
			380/440V	kW	5.5
			500/690V	kW	7.5
Single-phase AC23A					
		110V	kW	0.8	
		220/230V	kW	1.7	

		380/440V	kW	3
Rated operational current in DC				
DC21A		48V	A	12
		60V	A	12
		110V	A	4
		220V	A	0.6
		440V	A	0.25
DC23A (poles in series)		24V	A	10 (1)
		48V	A	10 (2)
		60V	A	10 (3)
		110V	A	5 (3)
		220V	A	5 (4)
DC13		24V	A	12
		48V	A	10
		60V	A	8
		110V	A	1
		220V	A	0.4
		440V	A	0.15
Power dissipation			W	0.8
<b>Mechanical features</b>				
Terminals screw				M3
Tightening torque for terminals max			Nm	0.5
Conductor size				
AWG - Rigid cable		min	AWG	20
		Max	AWG	12
AWG - Flexible cable		min	AWG	20
		Max	AWG	14
Conductor size (IEC) - Flexible cable		min	mm <sup>2</sup>	0.5
		Max	mm <sup>2</sup>	2.5
Conductor size (IEC) - Rigid cable		min	mm <sup>2</sup>	0.5
		Max	mm <sup>2</sup>	2.5
Mechanical life			cycles	3x10 <sup>6</sup>
<b>UL technical data</b>				
Motor power for direct-on-line control				
for three-phase motor		120V	HP	1.5
		240V	HP	3
		480V	HP	50
		600V	HP	40
for single-phase motor		120V	HP	0.5
		240V	HP	1
<b>Ambient conditions</b>				
Temperature				
Operating temperature		min	°C	-25
		max	°C	+55

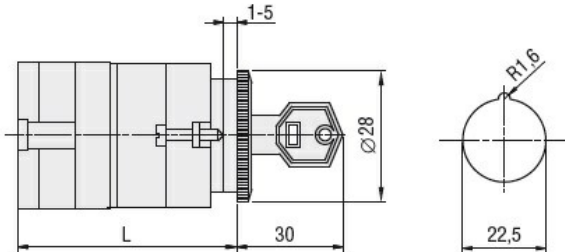
Storage temperature

min	°C	-40
max	°C	+70

**Resistance & Protection**

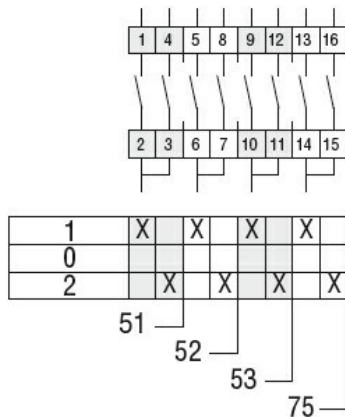
Frontal IP degree	IP40
Terminals IP degree	IP00

**Dimensions**



Series	L			
	1	2	3...8	
7GN12	47	56.7	66.4	114.9
7GN20	47	56.7	66.4	114.9
7GN25	51.4	65	78.6	146.6

**Wiring diagrams**



**Certifications and compliance**

Compliance

CSA C22.2 n° 14  
IEC/EN/BS 60947-1  
IEC/EN/BS 60947-3  
IEC/EN/BS 60947-5-1  
UL60947-4-1

Certificates

EAC  
UL

**ETIM classification**

ETIM 8.0

EC001029 -  
Selector switch,  
complete