



Product designation

Product type designation

Description

Accessories for

Padlockable
handle
P5X18472
IP65 red/yellow
padlockable door
coupling handle
complete with
shaft.
Accessories for
IEC-compliant
MCCBs

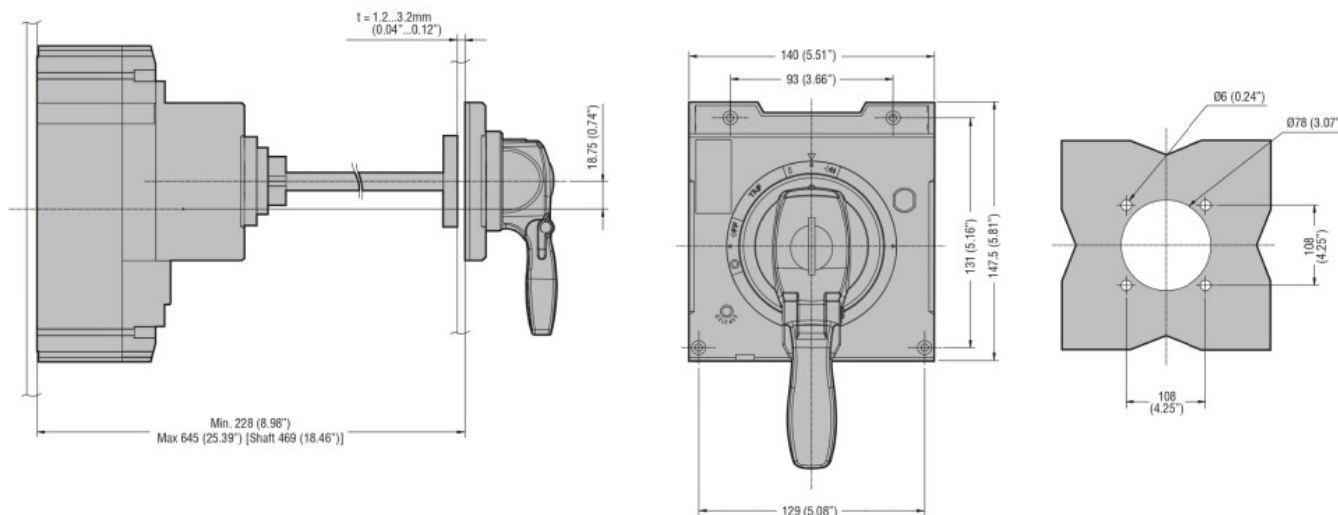
Mechanical features

Weight g 2200

Ambient conditions

IEC degree of protection IP65

Dimensions



Certifications and compliance

Certificates

ETIM classification

EC000066 - Power contactor, AC switching