



Interface protection for system requiring three maximum voltage thresholds
PMVF90

Product designation

Product type designation

General characteristics

Description

For system requiring three maximum voltage thresholds

Type of system

Single-phase and three-phase, with and without neutral

Power supply

Operating voltage range

22...264VAC / 22...264VDC

Rated frequency

Hz 45...55

Power consumption Max

VA 6.2

Power dissipation Max

W 2

Auxiliary supply

Rated auxiliary supply voltage U_s

AC

min	VAC	24
Max	VAC	240

DC

min	VDC	24
Max	VDC	240

Power consumption

AC (Max)

VA	2.5VA at 24VAC; 6.2VA at 240VAC
----	------------------------------------

DC (Max)

VA	60mA at 24VDC; 7mA at 240VDC
----	---------------------------------

Power dissipation

AC (Max)

W	1.6W at 24VAC; 2W at 240VAC
---	--------------------------------

DC (Max)

W	1.5W at 24VDC; 1.7W at 240VDC
---	----------------------------------

Immunity time for microbreakings	ms	240VAC 50Hz ≤2000ms 240VDC ≤1000ms 24VAC 50Hz ≤30ms 24VDC ≤15ms
----------------------------------	----	--

Voltage inputs

Maximum rated operational voltage		400VAC L-L; 230VAC L-N 50Hz
Measurement range	V	10...520VAC L-L; 5...300VAC L-N
Frequency range	Hz	45...55

Current inputs

Measurement method	TRMS
--------------------	------

Relay outputs

Number of relays	Nr.	3
Contact arrangement		2 changeover contacts + 1NO
Rated operational voltage AC (IEC)	VAC	250
UL/CSA and IEC/EN 60947-5-1 designation		For OUT1-OUT2 contact: 8A 250VAC AC1/C300, 8A 30VDC For OUT3 contact: 2A 250VAC AC1/C300; 2A 30VDC

Digital inputs

Number and type of inputs		5 to be used with dry contact with common terminal
Input current	mA	6

Connections

Terminals type		Screw - removable		
Tightening torque for terminals	max max	Nm lbin	0.44 4	
Conductor cross section	AWG/Kcmil	min Max	AWG AWG	24 12
	IEC	min Max	mm ² mm ²	0.2 2.5

Insulations

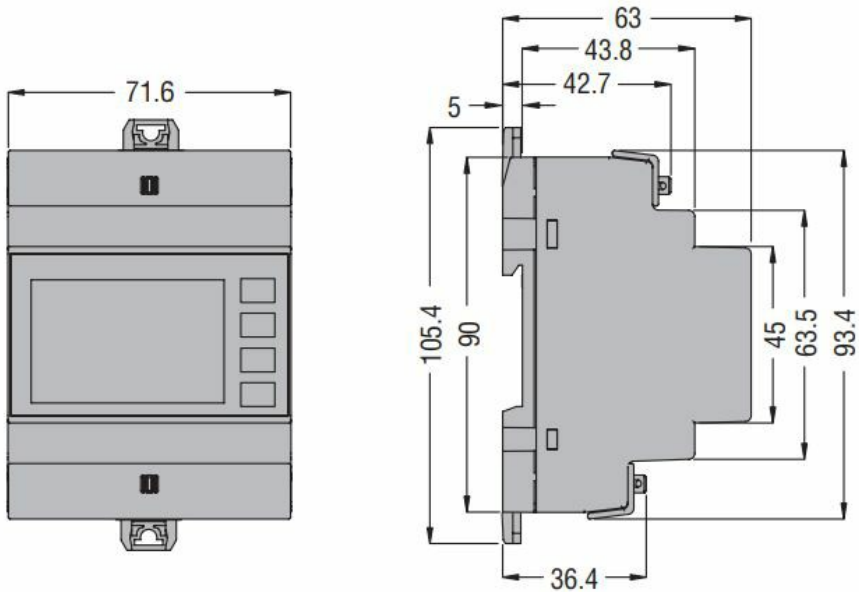
Rated insulation voltage Ui	V	300
-----------------------------	---	-----

Housing

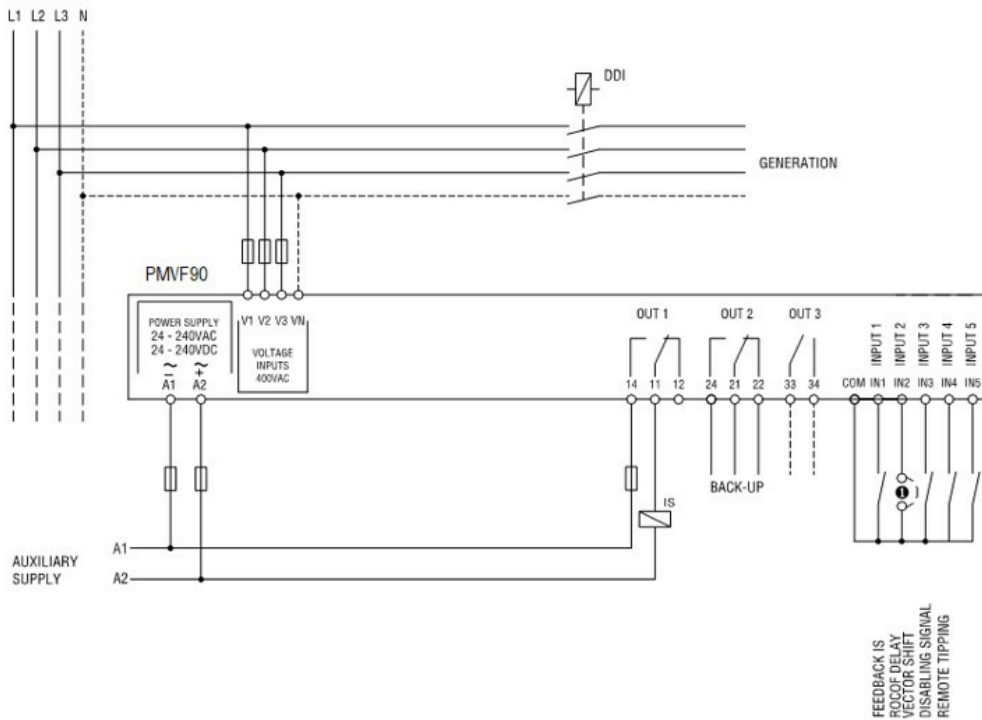
Execution (n° of modules)	4
Material	Polyamide

Mounting	35mm DIN rail or screw-type by means of clips removable	
IEC degree of protection	IP40 on front; IP20 at terminals	
Dimensions (W x H x D)	mm	71.6 x 105.4 x 63
Weight	g	326

Dimensions



Wiring diagrams



Certifications and compliance

Compliance

IEC/EN 61000-6-2
IEC/EN 61000-6-4
IEC/EN 61010-1

ETIM classification

ETIM 8.0

EC001438 -
Voltage
monitoring relay