



Interface protection system compliant with VDE-AR-N 4105, VDE-AR-N 4110, VDE-AR-N 4120 and VDE V 0126-1-1
PMVF81

Product designation

Product type designation

General characteristics

Description

System with or without neutral. Dual threshold minimum and maximum voltage and frequency protection. ROCOF and Vector shift

Type of system

Single-phase and three-phase, with and without neutral

Power supply

Operating voltage range		22...264VAC / 22...264VDC
Rated frequency	Hz	45...55
Power consumption Max	VA	6.2
Power dissipation Max	W	2

Auxiliary supply

Rated auxiliary supply voltage Us	AC	min	VAC	24
		Max	VAC	240
	DC	min	VDC	24
		Max	VDC	240

Power consumption

AC (Max)	VA	2.5VA at 24VAC; 6.2VA at 240VAC
DC (Max)	VA	60mA at 24VDC; 7mA at 240VDC

Power dissipation

AC (Max)

INTERFACE PROTECTION SYSTEM UNITS COMPLIANT WITH VDE-AR-N 4105, VDE-AR-N 4110, VDE-AR-N 4120 AND VDE V 0126-1-1 FOR SINGLE-PHASE AND THREE-PHASE SYSTEM WITH AND WITHOUT LOW VOLTAGE NEUTRAL, DUAL THRESHOLD MINIMUM AND MAXIMUM VOLTAGE AND FREQUENCY PROTECTION, R.O.C.O.F. AND VECTOR SHIFT.

MODULE TYPE / III			
		W	1.6W at 24VAC; 2W at 240VAC
DC (Max)		W	1.5W at 24VDC; 1.7W at 240VDC
Immunity time for microbreakings		ms	240VAC 50Hz ≤2000ms 240VDC ≤1000ms 24VAC 50Hz ≤30ms 24VDC ≤15ms
Voltage inputs			
Maximum rated operational voltage			400VAC L-L; 230VAC L-N 50Hz
Measurement range		V	10...520VAC L-L; 5...300VAC L-N
Frequency range		Hz	45...55
Current inputs			
Measurement method			TRMS
Relay outputs			
Number of relays		Nr.	3
Contact arrangement			2 changeover contacts + 1NO
Rated operational voltage AC (IEC)		VAC	250
UL/CSA and IEC/EN 60947-5-1 designation			For OUT1-OUT2 contact: 8A 250VAC AC1/C300, 8A 30VDC For OUT3 contact: 2A 250VAC AC1/C300; 2A 30VDC
Digital inputs			
Number and type of inputs			5 to be used with dry contact with common terminal
Input current		mA	6
Connections			
Terminals type			Screw - removable
Tightening torque for terminals		max Nm	0.44
		max lbin	4
Conductor cross section			
AWG/Kcmil		min AWG	24
		Max AWG	12
IEC		min mm ²	0.2
		Max mm ²	2.5
Insulations			
Rated insulation voltage Ui		V	300

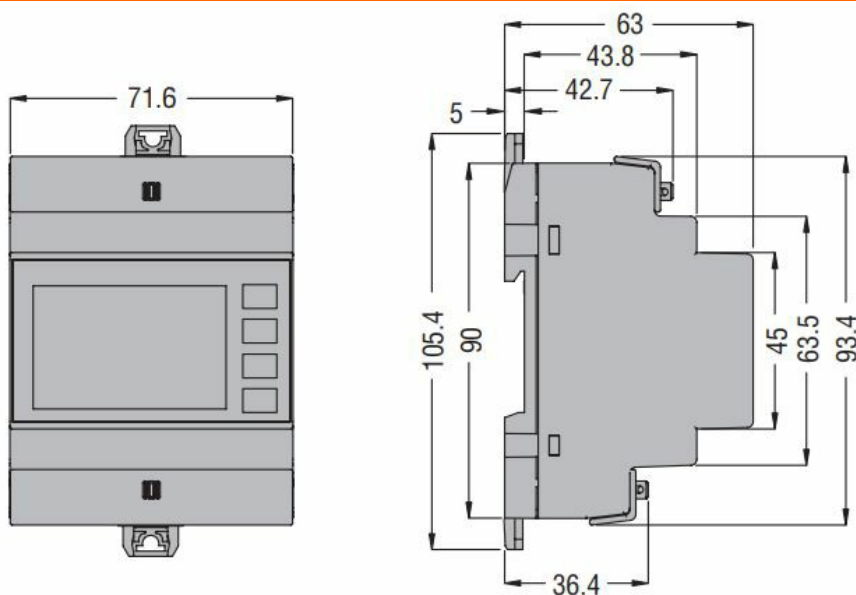
INTERFACE PROTECTION SYSTEM UNITS COMPLIANT WITH VDE-AR-N 4105, VDE-AR-N 4110, VDE-AR-N 4120 AND VDE V 0126-1-1 FOR SINGLE-PHASE AND THREE-PHASE SYSTEM WITH AND WITHOUT LOW VOLTAGE NEUTRAL, DUAL THRESHOLD MINIMUM AND MAXIMUM VOLTAGE AND FREQUENCY PROTECTION, R.O.C.O.F. AND VECTOR SHIFT.

MODULAR TYPE (4U)

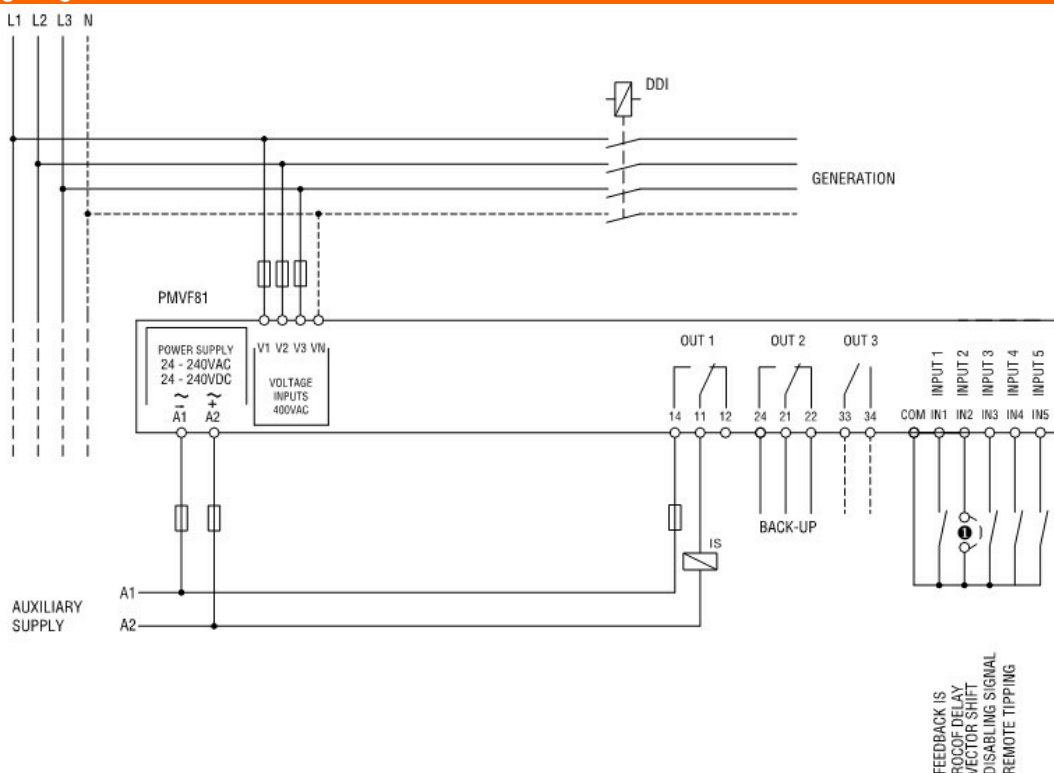
Housing

Execution (n° of modules)	4	
Material	Polyamide	
Mounting	35mm DIN rail or screw-type by means of clips removable	
IEC degree of protection	IP40 on front; IP20 at terminals	
Dimensions (W x H x D)	mm	71.6 x 105.4 x 63
Weight	g	326

Dimensions



Wiring diagrams



Certifications and compliance

INTERFACE PROTECTION SYSTEM UNITS COMPLIANT WITH VDE-AR-N 4105, VDE-AR-N 4110, VDE-AR-N 4120 AND VDE V 0126-1-1 FOR SINGLE-PHASE AND THREE-PHASE SYSTEM WITH AND WITHOUT LOW VOLTAGE NEUTRAL, DUAL THRESHOLD MINIMUM AND MAXIMUM VOLTAGE AND FREQUENCY PROTECTION, R.O.C.O.F. AND VECTOR SHIFT.

MODULE TYPE (411)

Compliance

IEC/EN 61000-6-2

IEC/EN 61000-6-4

IEC/EN 61010-1

VDE V 0126-1-1

VDE-AR-N 4105

VDE-AR-N 4110

VDE-AR-N 4120

Certificates

VDE

ETIM classification

ETIM 8.0

EC001438 -
Voltage
monitoring relay