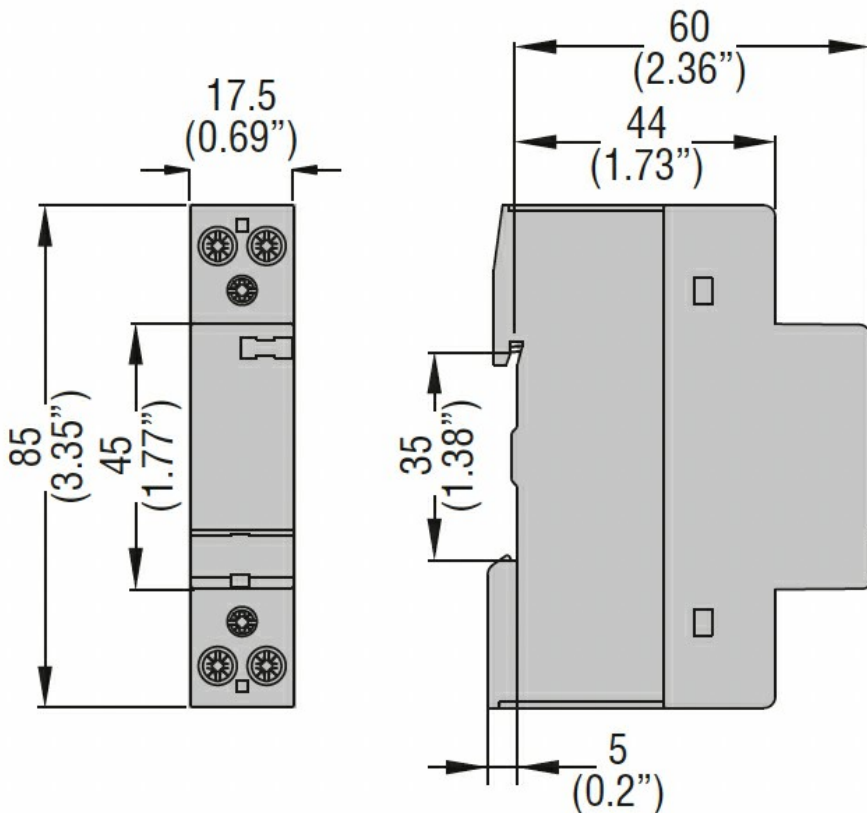




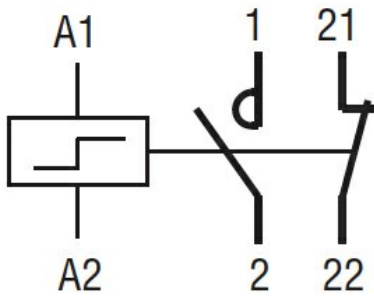
Product designation	LATCHING RELAY		
Product type designation	CNB		
Operating voltage type	AC		
Manual control	YES		
Number of poles	2		
Number of DIN modules	1		
<b>Electrical features</b>			
IEC Conventional free air thermal current I <sub>th</sub>	A	20	
Rated insulation voltage U <sub>i</sub> IEC/EN	V	440	
Rated impulse withstand voltage U <sub>imp</sub>	kV	4	
Minimum switching capacity	≥10V ≥100mA		
Power dissipation per pole (average value) I <sub>th</sub>	W	1.7	
<b>Control circuit</b>			
Auxiliary rated supply voltage U <sub>s</sub>	230VAC		
Auxiliary contacts	NO	Nr.	1
	NC	Nr.	1
Average coil consumption ≤20°C	in-rush	W	18/13
Operating voltage			
pick-up	min	%U <sub>s</sub>	85
	max	%U <sub>s</sub>	110
<b>Operating times</b>			
Average time			
Closing NO	min	ms	5
	max	ms	20
Opening NO	min	ms	5
	max	ms	20
<b>Operations</b>			
Mechanical life	cycles	3000000	
Electrical life AC-3	cycles	300000	
Electrical life AC1	cycles	200000	
<b>Ambient conditions</b>			
Operating temperature	min	°C	-5
	max	°C	55
Storage temperature	min	°C	-30
	max	°C	80
Max altitude	m	2000	
<b>Mechanical features</b>			

Fixing	DIN rail 35mm		
Tightening torque for coil terminal	max	Nm	0.6
	max	lbin	0.6
Tightening torque for terminals	max	Nm	1.2
	max	lbin	0.9
Conductor section			
Coil terminal	min	mm <sup>2</sup>	1
	max	mm <sup>2</sup>	2.5
Power terminal	min	mm <sup>2</sup>	1
	max	mm <sup>2</sup>	10
Terminals tool	PZ2		
Weight	g	135	
<b>Resistance &amp; Protection</b>			
Frontal IP degree	IP20		
Pollution degree	3		

**Dimensions**



**Wiring diagrams**



### Certifications and compliance

#### Compliance

IEC/EN/BS 60669-1

IEC/EN/BS 60669-2-2

IEC/EN/BS 60947-1

IEC/EN/BS 60947-4-1

IEC/EN/BS 60947-5-1

IEC/EN/BS 61095

#### Certificates

EAC

### ETIM classification

ETIM 8.0

EC000066 -  
Power contactor,  
AC switching