



Product designation			SLIM
Product type designation			RELAY+SOCKET
HRA101			
Contact characteristics			
Contact configuration			1 C/O
Rated insulation voltage Ui IEC/EN	V		250
Rated impulse withstand voltage Uimp	kV		4
IEC Conventional free air thermal current Ith	A		6
Maximum instantaneous current	A		20 (500ms)
Rated current (In)	A		6
Relay control voltage	V		220... 240VAC/VDC
UL/CSA and IEC/EN 60947-5-1 designation	B300 – R300		
UL rating	6A 277VAC; 6A 30VDC		
Max contrrollable power in			
	AC-1	W	1500
	AC-15	VA	360
Rated operating power AC-1		VA	1500
Rated operating power AC-15	230 VAC	VA	360
Single-phase motor control	230VAC	kW	0.186
Rated operating current DC-1			
	30V	A	6
	110V	A	0.2
	220V	A	0.12
Minimum switching load	V / mA		5 / 100
Contact impedance	mΩ		100
Contact material	Ag/Ni		
Operating times			
Closing	ms		≤8
Opening	ms		≤4
Operations			
Mechanical life	cycles		10000000
Electrical life AC1	cycles		30000
Coil characteristics			
Relay control voltage + socket	V		220...240VAC/DC
Average coil consumption AC at 20°C	VA		0.2
Average coil consumption DC at 20°C	W		0.2
Operating range			
	Closing	% Un	≥75
	Opening	% Un	≥5
Maximum cycle frequency	cycles/h		10000

Mechanical features

Max socket terminal tightening torque	Nm	0.5
Socket screw tightening tool (cross / flat blade)		PH0 / 3.5mm
Conductor section		
AWG/Kcmil	min	20
	max	16
IEC	min	mm ² 0.5
	max	mm ² 1.5
Operating position	normal	Any
Fixing		On 35mm DIN rail

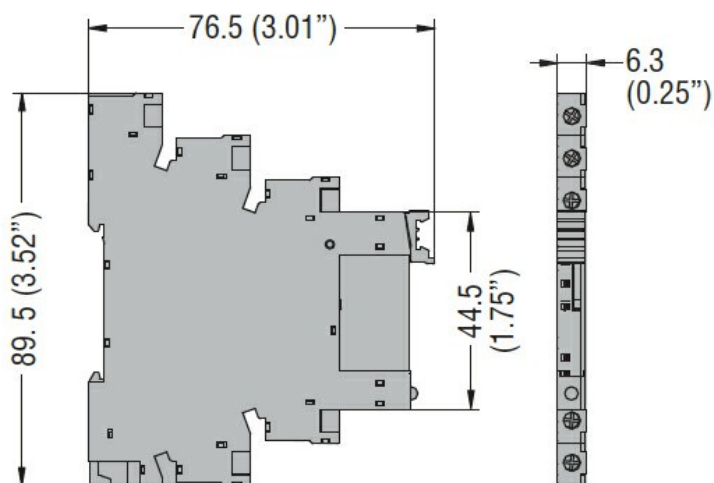
Ambient conditions

Temperature			
Operating temperature	min	°C	-40
	max	°C	+70
Storage temperature	min	°C	-40
	max	°C	+80

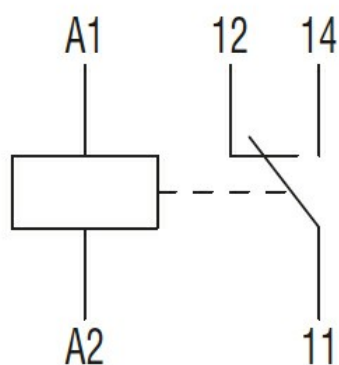
Other features

Indication	Yes (on the socket)
Mechanical contact position indicator	No
Mechanical test actuator	No

Dimensions



Wiring diagrams



Certifications and compliance

Compliance

IEC/EN 61810

Certificates

cURus

EAC

VDE

ETIM classification

ETIM 8.0

EC001437 -
Switching relay