



Product designation			MINIATURE RELAYS		
Product type designation			HR302C		
Contact characteristics					
Contact configuration			2 C/O		
Rated insulation voltage Ui IEC/EN			V	250	
Rated impulse withstand voltage Uimp			kV	6	
IEC Conventional free air thermal current Ith			A	8	
Maximum instantaneous current			A	20	
Rated current (In)			A	8	
Relay control voltage			V	110...120VAC	
Max contrrollable power in			AC-1	W	2000
			AC-15	VA	150
Rated operating power AC-1			VA	2000	
Rated operating power AC-15			230 VAC	VA	150
Single-phase motor control			230VAC	kW	0.2
Rated operating current DC-1			30V	A	8
			110V	A	0.3
			220V	A	0.1
Minimum switching load			V / mA	5 / 100	
Contact impedance			mΩ	100	
Contact material			AgSnO2		
Operating times					
Closing			ms	10	
Opening			ms	5	
Operations					
Mechanical life			cycles	10000000	
Electrical life AC1			cycles	50000	
Coil characteristics					
Average coil consumption AC at 20°C			VA	0.9	
Average coil consumption DC at 20°C			W	0.45	
Operating range			Closing	% Un	70...110
			Opening	% Un	20...55
Maximum cycle frequency			cycles/h	3600	
Mechanical features					
Max socket terminal tightening torque			Nm	0.6	
Socket screw tightening tool (cross / flat blade)			PH1 / 4.5mm		
Conductor section			AWG/Kcmil		

	min	20
	max	14
IEC		
	min	mm <sup>2</sup> 0.5
	max	mm <sup>2</sup> 2.5
Operating position	normal	Any
Fixing		On 35mm DIN rail and with screw

#### Ambient conditions

##### Temperature

##### Operating temperature

min	°C	-40
max	°C	+85

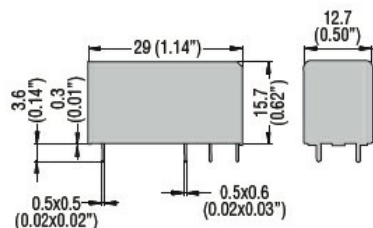
##### Storage temperature

min	°C	-40
max	°C	+85

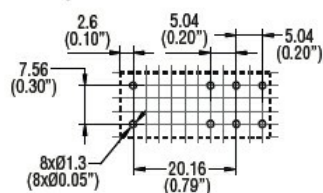
#### Other features

Indication	No
Mechanical contact position indicator	No
Mechanical test actuator	No

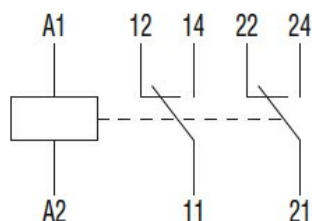
#### Dimensions



##### PCB layout



#### Wiring diagrams



#### Certifications and compliance

##### Compliance

IEC/EN 61810

##### Certificates

CSA  
cULus  
cURus

---

EAC

---

VDE

ETIM classification

ETIM 8.0

EC001437 -  
Switching relay