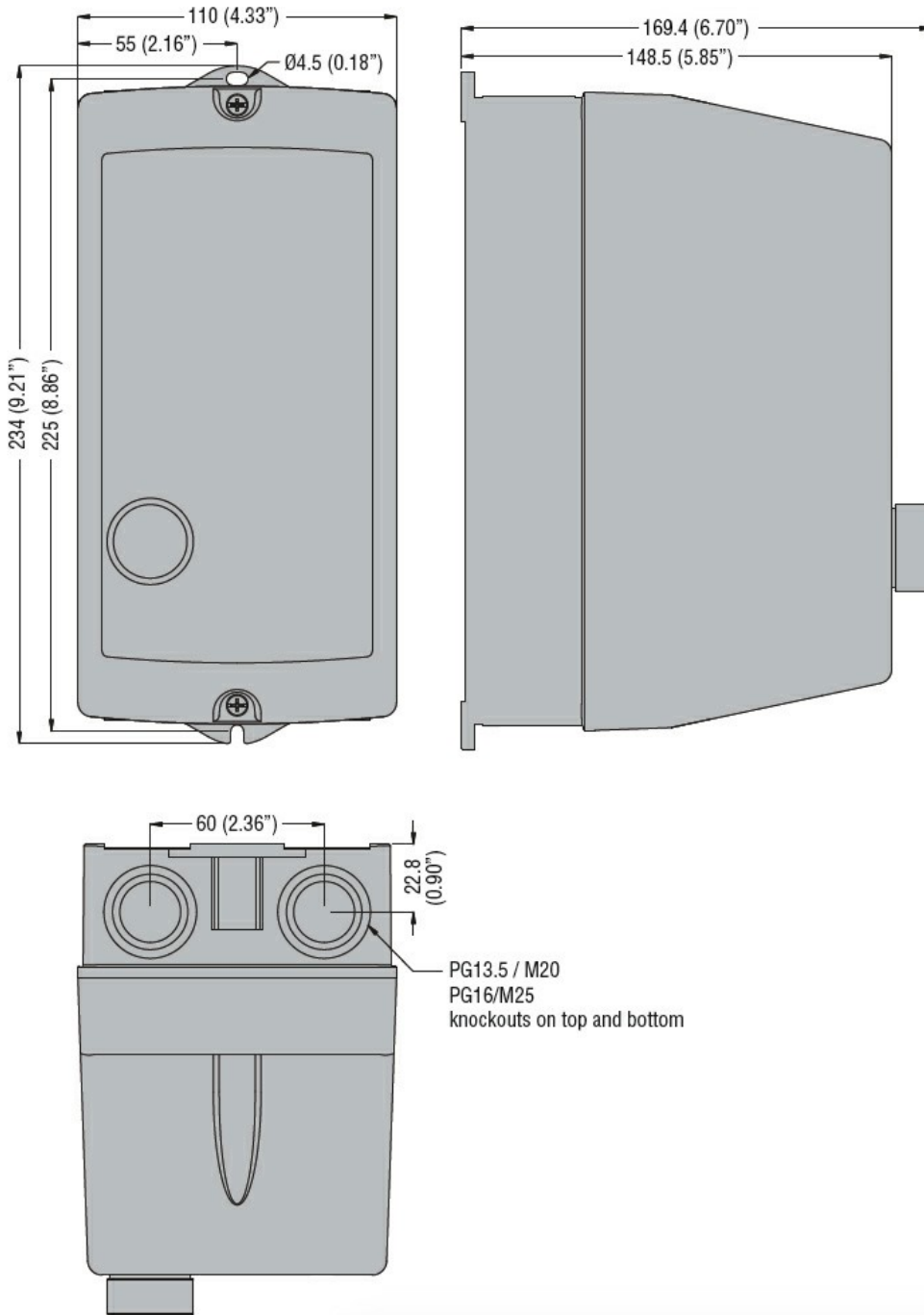
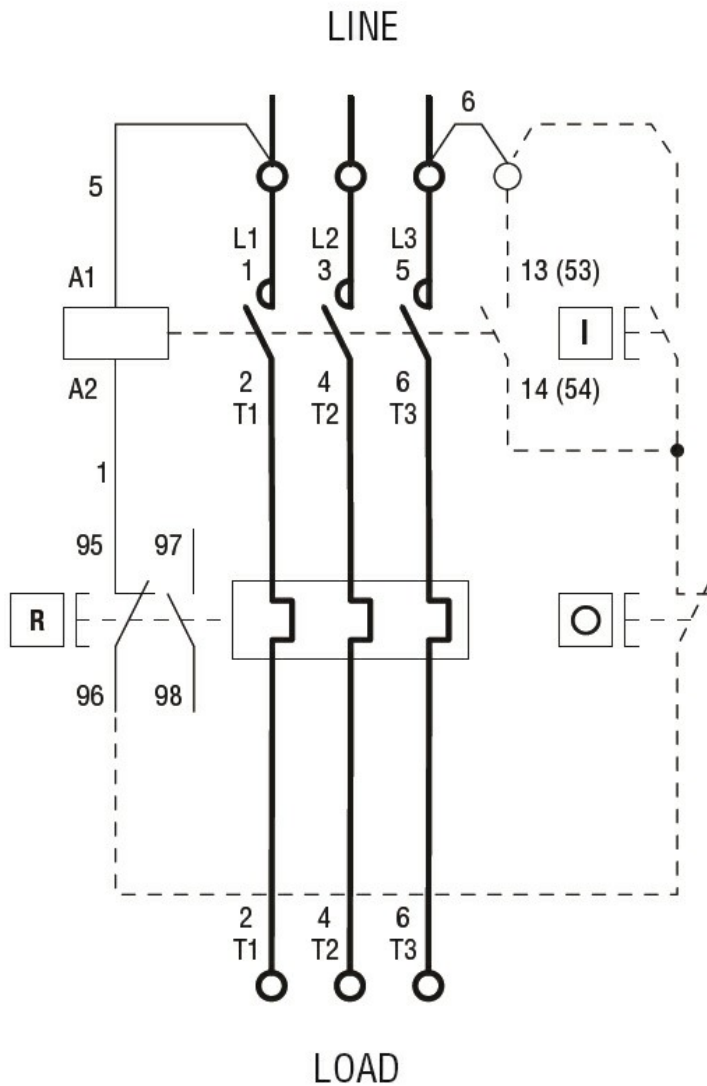




Product designation	Direct-on-line starter		
Product type designation	M2R03212...B4		
<b>Electrical features</b>			
Relay adj range	A	24-32	
IEC technical characteristics ( $\leq 440V$ )			
	le	A	32
	kW	kW	15
<b>Components</b>			
Starter enclosure standard supplied	M2RA		
Contactor standard supplied	BF3200A		
Thermal relay standard supplied	RF383200		
<b>Mechanical features</b>			
Weight	g	1260	
<b>Ambient conditions</b>			
Operating temperature			
	min	°C	-25
	max	°C	+60
Storage temperature			
	min	°C	-40
	max	°C	+70
<b>Resistance &amp; Protection</b>			
Frontal IP degree	IP65		
<b>Dimensions</b>			



Wiring diagrams



R = Reset; I = Start; O = Stop

**Certifications and compliance**

Compliance

IEC/EN 60947-1  
IEC/EN 60947-4-1  
UL508 CSA C22.2 n° 14

Certificates

CSAus  
cULus  
EAC

**ETIM classification**

ETIM 8.0

EC001037 -  
Motor  
starter/Motor  
starter  
combination