



Product designation

Direct-on-line
starter

Product type designation

M2R02510

Electrical features

Maximum operating current ($\leq 440V$) A 25

Components

Starter enclosure standard supplied M2RA

Contactor standard supplied BF2510A

Thermal relay to purchase separately RF38...

Mechanical features

Weight g 1020

Ambient conditions

Operating temperature

min	°C	-25
max	°C	+60

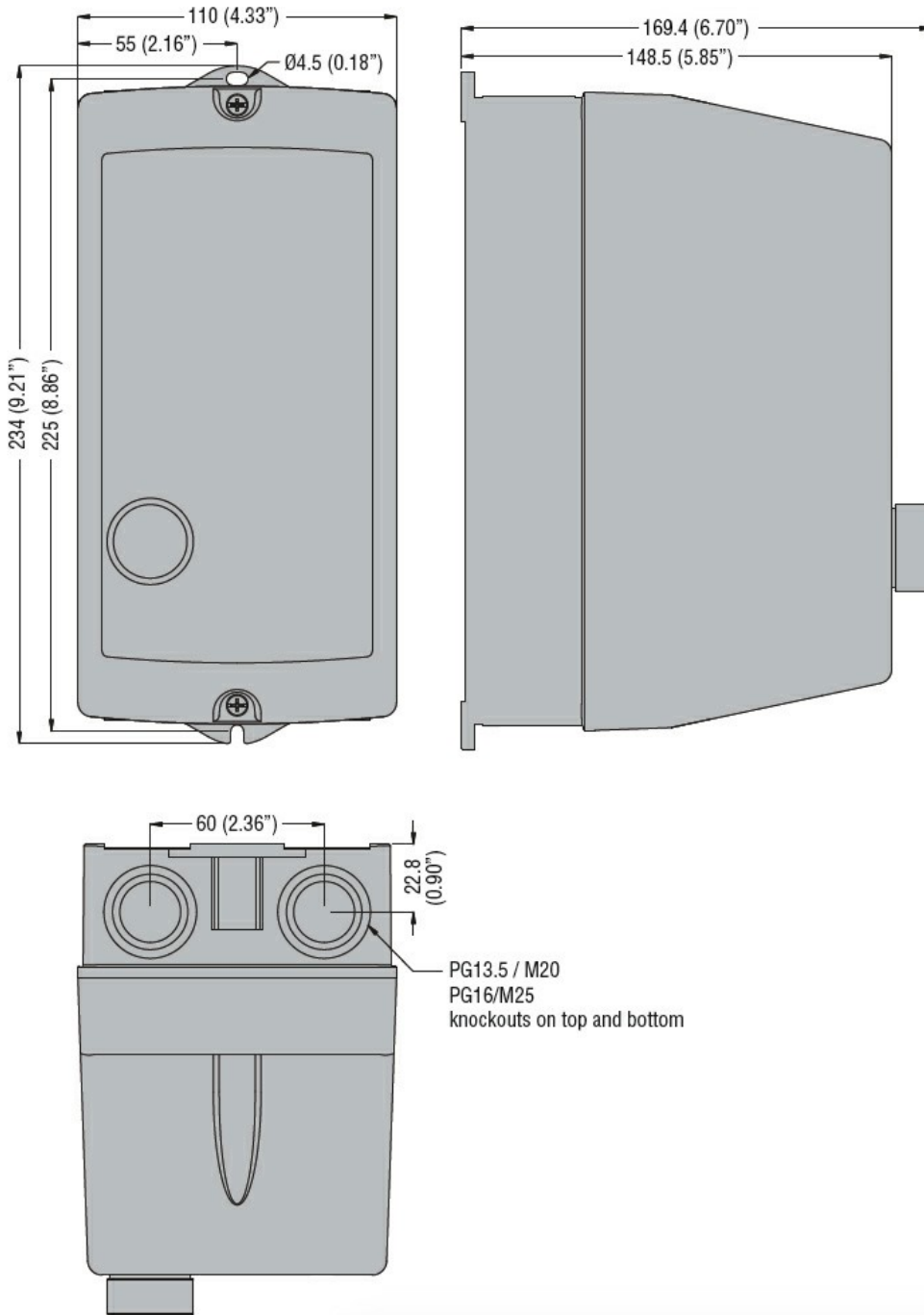
Storage temperature

min	°C	-40
max	°C	+70

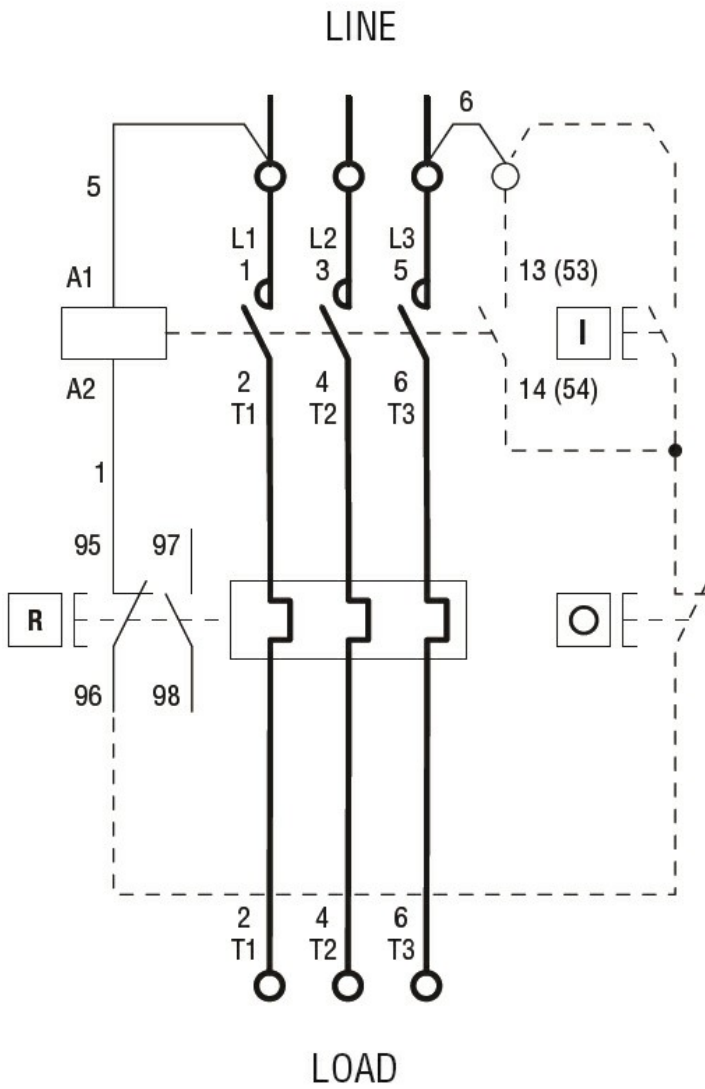
Resistance & Protection

Frontal IP degree IP65

Dimensions



Wiring diagrams



R = Reset; I = Start; O = Stop

Certifications and compliance

Compliance

IEC/EN 60947-1
IEC/EN 60947-4-1
UL508 CSA C22.2 n° 14

Certificates

CSAus
cULus
EAC

ETIM classification

ETIM 8.0

EC001037 -
Motor
starter/Motor
starter
combination