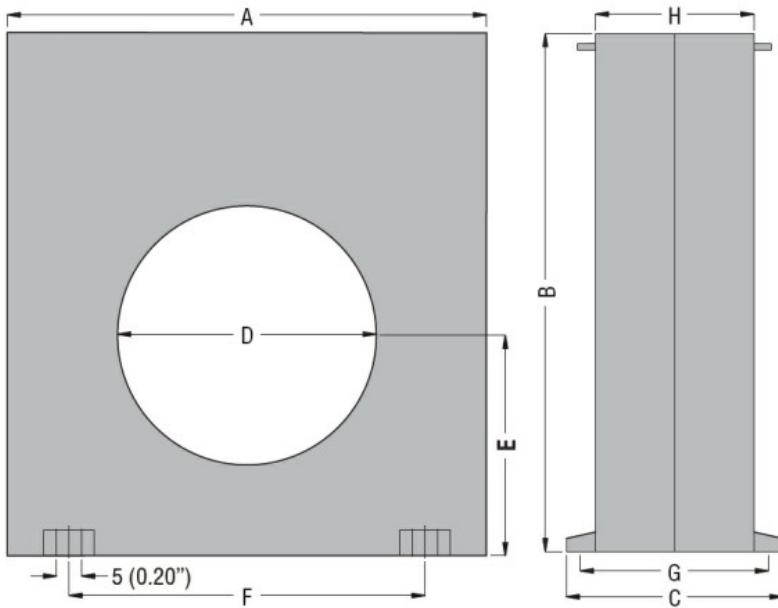




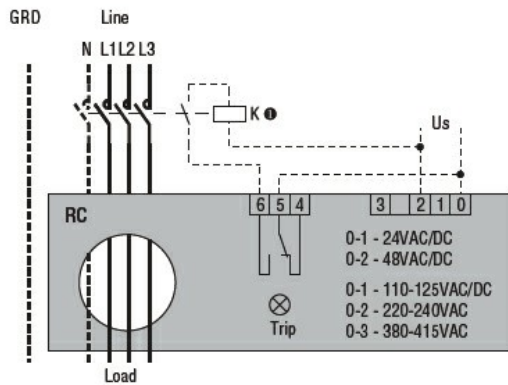
Product designation				Earth leakage relays
Product type designation				RC
General characteristics				
Description				Compact, 1 operating threshold
Residual operation characteristic				Type A
N° of operating threshold				1
Control circuit				
Toroidal transformer				Incorporated diam. 60mm/2.36"
Adjustments	Tripping set-point ($I_{\Delta n}$)	(x0.1)	A	0.025...0.25
		(x1)	A	0.25...2.5
		(x10)	A	2.5...25
	Tripping delay time	(tx1)	s	0.02...0.5
		(tx10)	s	0.2...5
Selection of multiplier for $I_{\Delta n}$ and t				By dip switches
Resetting				Configurable automatic or manual by button on front
Test Button				Yes
Shunt circuit control				No
Auxiliary supply				
Auxiliary rated supply voltage U_s				110... 125VAC/DC; 220... 240/380... 415VAC
Operational limits				110... 125VAC/DC or 220...240VAC or 380...415VAC
Output contacts				1
Rated frequency			Hz	50...60
Power consumption Max			VA	3
Relay outputs				
Relay state				Normally de-energised
Contact arrangement				1 changeover SPDT (trip)
Rated contact capacity IEC I_{th}				5A - 250VAC
Insulations				

Power frequency withstand voltage		kV	2.5kV for 60s
Indications			
Auxiliary voltage available (ON)			Green LED
Relay tripping (TRIP)			Red LED
Connections			
Terminals type			Fixed
Tightening torque for terminals		max	Nm 0.5
		max	Ibin 4.5
Conductor section			
	AWG/Kcmil	min	24
		max	12
	IEC	min	mm ² 0.2
		max	mm ² 2.5
Operations			
Mechanical life		cycles	50000000
Electrical life		cycles	300000
Ambient conditions			
Temperature			
	Operating temperature	min	°C -10
		max	°C +60
	Storage temperature	min	°C -20
		max	°C +80
Relative humidity		%	≤90%
Housing			
Material			Self-extinguishing polycarbonate
Mounting			35mm DIN rail
Degree of protection			IP20 terminals
Dimensions (W x H x D)		mm	100x110x70
Weight		g	485
Dimensions			



TYPE	A	B	C	D	E	F	G	H
RC35	100 (3.94")	110 (4.33")	70 (2.75")	35 (1.38")	47 (1.85")	60 (2.36")	60 (2.36")	50 (1.97")
RC60	100 (3.94")	110 (4.33")	70 (2.75")	60 (2.36")	47 (1.85")	60 (2.36")	60 (2.36")	50 (1.97")
RC80	150 (5.90")	160 (6.30")	70 (2.75")	80 (3.15")	70 (2.75")	110 (4.33")	60 (2.36")	50 (1.97")
RC110	150 (5.90")	160 (6.30")	70 (2.75")	110 (4.33")	70 (2.75")	110 (4.33")	60 (2.36")	50 (1.97")

Wiring diagrams



Certifications and compliance

Compliant with standards

IEC/EN 60947-2

Certificates

EAC

ETIM classification

ETIM 8.0

EC001445 -
Residual current
monitoring relay