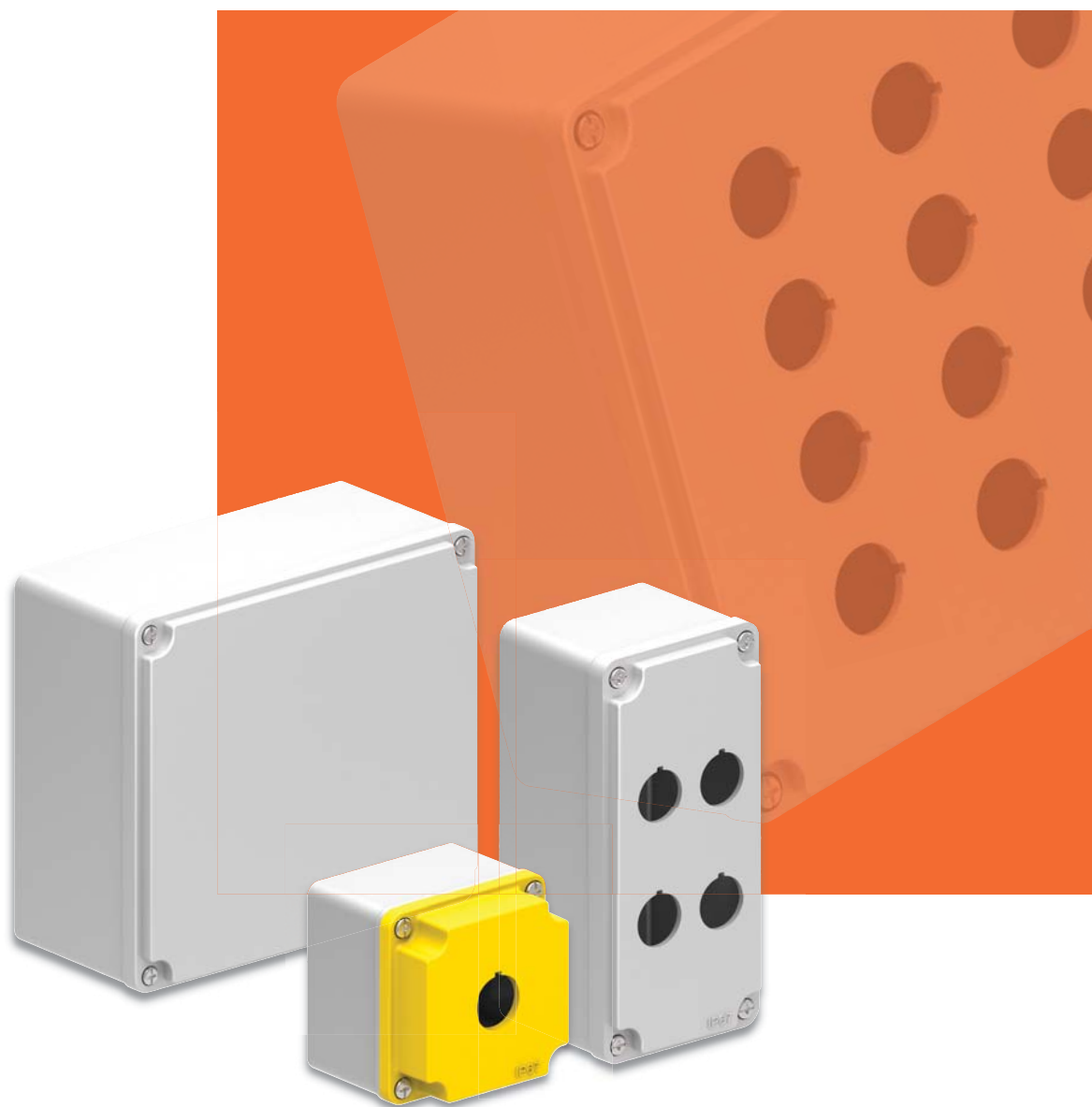


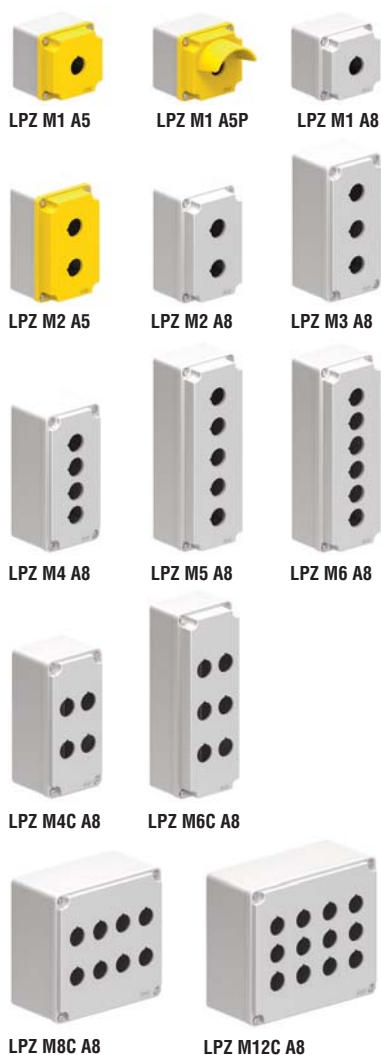
METAL CONTROL STATIONS AND ENCLOSURES



 **Lovato**
electric

ENERGY AND AUTOMATION

Enclosures with cut-outs for Ø22mm units



Order code	Description	Cover colour	Qty per pkg.	Wt.
			n°	[kg]
With holes.				
LPZ M1 A5	For 1 actuator	Yellow	1	0.343
LPZ M1 A5P	For 1 actuator with shroud	Yellow	1	0.382
LPZ M1 A8	For 1 actuator	Grey	1	0.349
LPZ M2 A5	For 2 actuators	Yellow	1	0.456
LPZ M2 A8	For 2 actuators	Grey	1	0.458
LPZ M3 A8	For 3 actuators	Grey	1	0.603
LPZ M4 A8	For 4 actuators	Grey	1	0.581
LPZ M5 A8	For 5 actuators	Grey	1	0.680
LPZ M6 A8	For 6 actuators	Grey	1	0.671
With multiholes.				
LPZ M4C A8	For 4 actuators	Grey	1	0.570
LPZ M6C A8	For 6 actuators	Grey	1	0.660
LPZ M8C A8	For 8 actuators	Grey	1	1.060
LPZ M12C A8	For 12 actuators	Grey	1	1.360
LPZ M16C A8	For 16 actuators	Grey	1	1.650

General characteristics

Control stations made of aluminium alloy suitable for pushbuttons, selector switches and pilot lights Platinum and 8LM series. Maximum 3 contacts for operator (with mounting adapter) mounted on the cover.

Operational characteristics

- Cable entry: Ø21mm (for M20 or PG13.5 cable gland)
- Degree of protection:
 - IEC/EN: IP66 and IP67
 - UL: NEMA 4X
- Earth connection through threaded holes on the base and on the cover (screws supplied)
- Ambient conditions:
 - Operating temperature: -25...+70°C
 - Storage temperature: -40...+85°C.

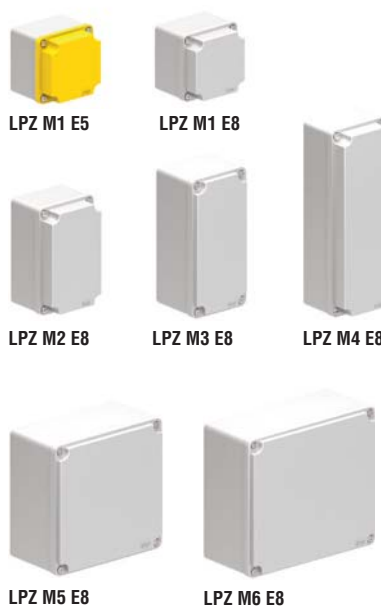
Certifications and compliance

Certifications obtained: cULus.
Compliant with standards: IEC/EN 60947-5-1.

- Not available for multiholes LPZM...C type.

Order codes	Dimensions (X, Y, Z) [mm]	n° of rows vertical	n° of rows horizontal
LPZ M1 A5/A8	80x80x73	1	1
LPZ M1 A5P	80x80x108	1	1
LPZ M2 A5/A8	80x130x73	1	2
LPZ M3 A8	80x170x73	1	3
LPZ M4 A8	80x170x73	1	4
LPZ M4C A8	80x170x73	2	2
LPZ M5 A8	80x230x73	1	5
LPZ M6 A8	80x230x73	1	6
LPZ M6C A8	80x230x73	2	3
LPZ M8C A8	160x160x90	4	2
LPZ M12C A8	170x190x90	4	3
LPZ M16C A8	190x250x90	4	4

Enclosures



Order code	Dimensions (X, Y, Z)	Cover colour	Qty per pkg.	Wt.
	[mm]		n°	[kg]
LPZ M1 E5	80x80x73	Yellow	1	0.346
LPZ M1 E8	80x80x73	Grey	1	0.352
LPZ M2 E8	80x130x73	Grey	1	0.462
LPZ M3 E8	80x170x73	Grey	1	0.600
LPZ M4 E8	80x230x73	Grey	1	0.680
LPZ M5 E8	160x160x90	Grey	1	1.100
LPZ M6 E8	170x190x90	Grey	1	1.400
LPZ M7 E8	190x250x90	Grey	1	1.700

General characteristics

Enclosures made of aluminium alloy suitable for pushbuttons, selector switches and pilot lights Platinum and 8LM series. Maximum 3 contacts for operator (with mounting adapter) mounted on the cover. The enclosures are supplied without any holes on the cover and on the base (no cable entry).

Operational characteristics

- Degree of protection:
 - IEC/EN: IP66 and IP67
 - UL: NEMA 4X
- Earth connection through threaded holes on the base and on the cover (screws supplied)
- Ambient conditions:
 - Operating temperature: -25...+70°C
 - Storage temperature: -40...+85°C.

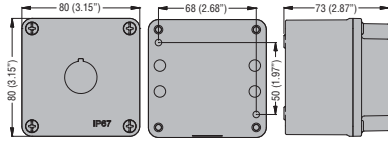
Certifications and compliance

Certifications obtained: cULus.
Compliant with standards: IEC/EN 60947-5-1.

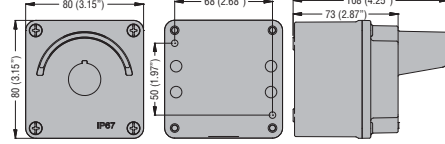
Order codes	Max. operator number	n° of rows vertical	n° of rows horizontal
LPZ M1 E5/E8	1	1	1
LPZ M2 E8	2	1	2
LPZ M3 E8	4	1	3
LPZ M4 E8	6	1	5
LPZ M5 E8	8	4	2
LPZ M6 E8	12	4	3
LPZ M7 E8	16	4	4

Dimensions [mm (in)]

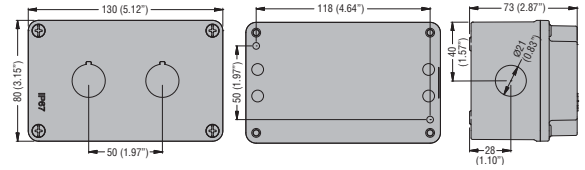
LPZ M1 A...



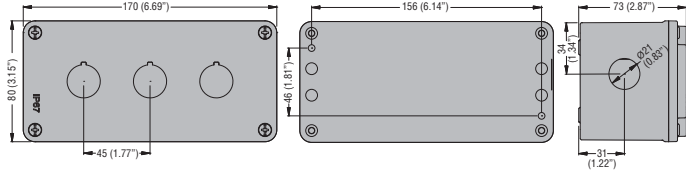
LPZ M1 A5P



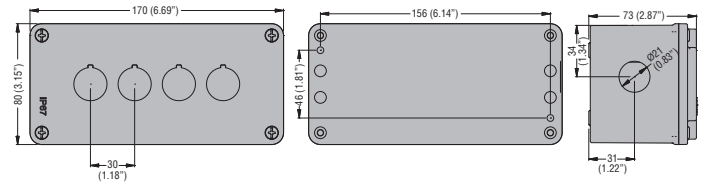
LPZ M2 A...



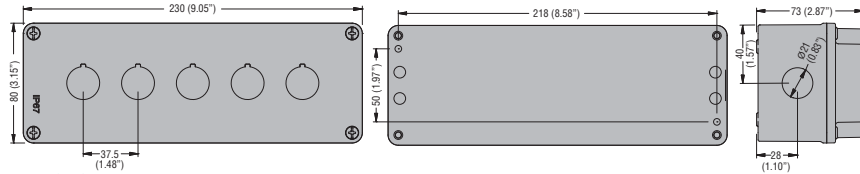
LPZ M3 A8



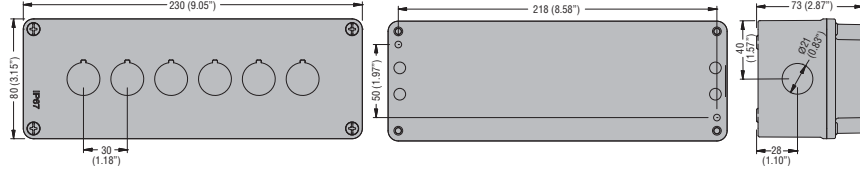
LPZ M4 A8



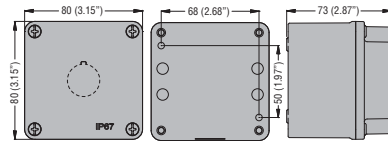
LPZ M5 A8



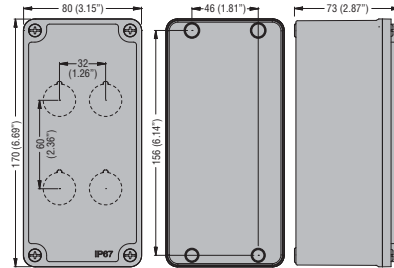
LPZ M6 A8



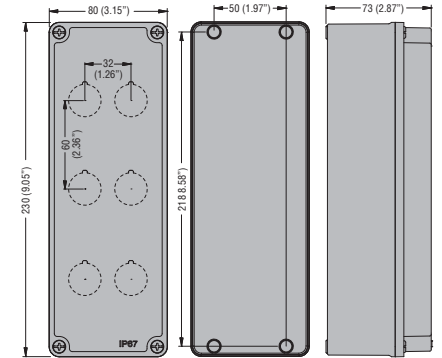
LPZ M1 E...



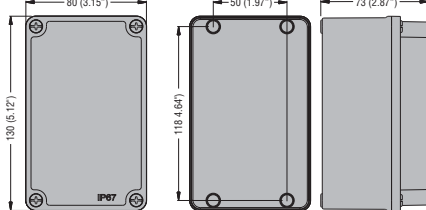
LPZ M4C A8 - LPZ M3 E8



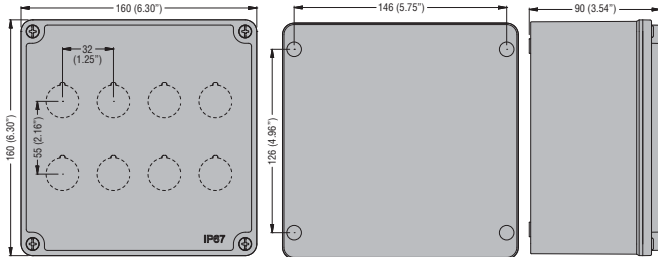
LPZ M6C A8 - LPZ M4 E8



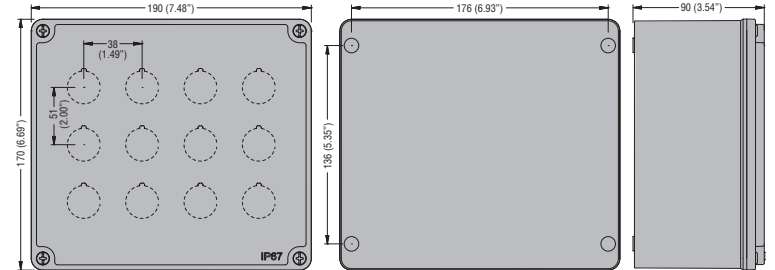
LPZ M2 E8



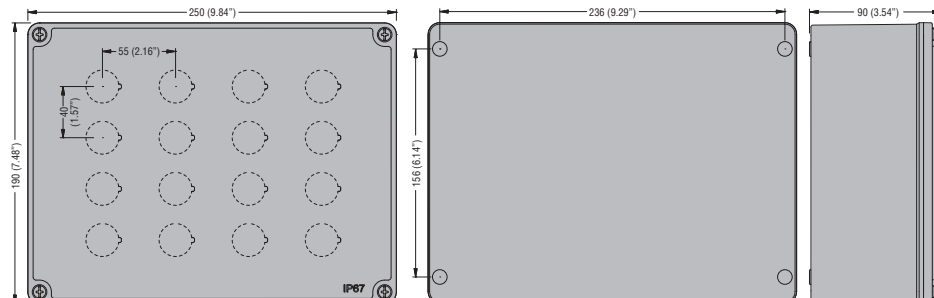
LPZ M8D A8 - LPZ M5 E8



LPZ M12C A8 - LPZ M6 E8



LPZ M16C A8 - LPZ M7 E8





ENERGY AND AUTOMATION

www.LovatoElectric.com

LOVATO ELECTRIC S.P. A.

via Don E. Mazza, 12
24020 Gorle (Bergamo) Italy

Tel +39 035 4282111
info@LovatoElectric.com

Follow us



The products described in this publication are subject to be revised or improved at any moment. Catalogue descriptions and details, such as technical and operational data, drawings, diagrams and instructions, etc., do not have any contractual value. In addition, products should be installed and used by qualified personnel and in compliance with the regulations in force for electrical systems in order to avoid damages and safety hazards.