



**Xpress**  
 configuration and  
 remote control  
 software

# Xpress configuration and remote control software

is a parameter configuration and remote monitoring software shared by the entire latest generation of LOVATO Electric products with communication port. It can be installed in the Windows® environment and connect individually (one node at a time) to the LOVATO Electric products connected to the network.



- ✓ Supports connection via CX01 (USB) or CX02 (Wi-Fi) dongle, USB, RS232, RS485, Ethernet and modem.
- ✓ Product configuration:
  - Parameter setting
  - Project file management for the RGK generating set controller series
- ✓ Product firmware upgrade (via CX01)
- ✓ Remote control:
  - Monitoring of main measurements
  - Sending commands to products
- ✓ Reading alarms and events memory.

Consult the [www.LovatoElectric.com](http://www.LovatoElectric.com) site for the list of products supported by Xpress.

Xpress can be ordered with code SYN1 XP00 or free download at the following link: [www.LovatoElectric.com/xpressdownload.aspx](http://www.LovatoElectric.com/xpressdownload.aspx)



## Monitoring

The measurements of the connected product are divided into context menus to make searching for the required value easy and shown on appropriate graphical gauges.



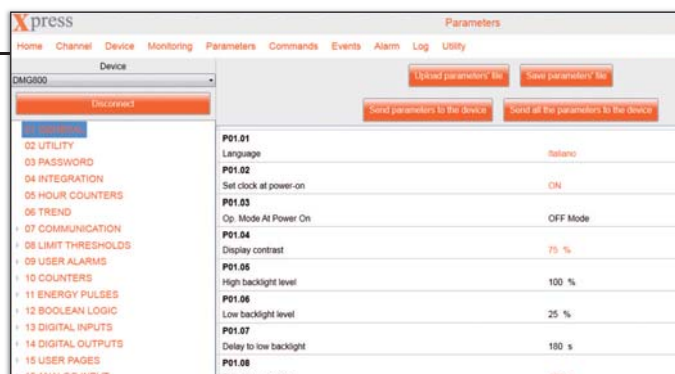
## Commands

A command can be sent to the connected product to energise outputs or clear energy meters and operating time counters for maintenance.



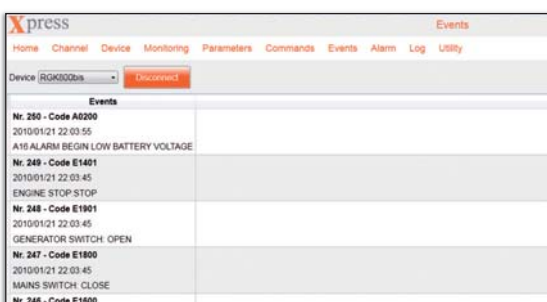
## Parameters

The options in the setup menu and parameters of the connected product are duplicated in the software to allow users to work with terms they already know. Parameter settings that differ from the **factory** default values are highlighted in a different colour. The parameters can be saved in a file and reloaded in subsequent installations, or defined even in the absence of a connection to the product, to permit preparation of a project to send subsequently.



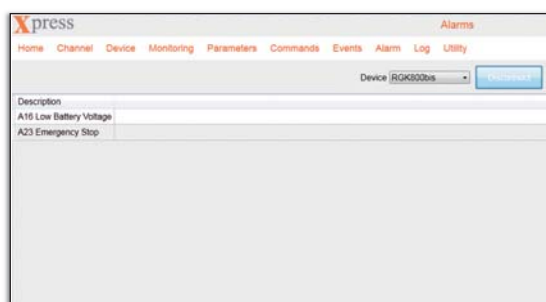
## Events

If the product connected features an event memory, the complete list can be downloaded and saved as an external file, in text or spreadsheet format.



## Alarms

The alarms active on the connected product can be displayed in the software, for a single screen with the complete list of recorded faults.



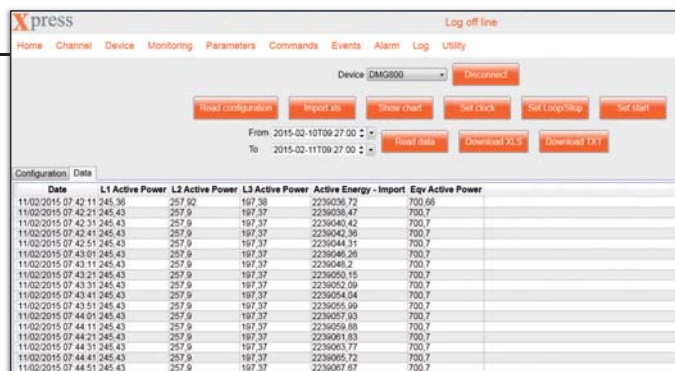
## Data logger memory management

Xpress can be used to configure and manage the EXP1030 and EXM1030 memory modules, in order to create tables with the history of the measurements selected by the user.

In particular, the software can be used to set:

- The measurements to be sampled
- The sampling time
- The event that triggers and ends sampling
- Memory capacity management (FIFO or stop when memory is full).

The data acquired can be displayed in graphs and exported to text files or spreadsheets.



[www.LovatoElectric.com](http://www.LovatoElectric.com)

**LOVATO ELECTRIC S. P. A.**

VIA DON E. MAZZA, 12  
24020 GORLE (BERGAMO) ITALY

Tel. +39 035 4282111  
Fax +39 035 4282200  
E-mail [info@LovatoElectric.com](mailto:info@LovatoElectric.com)

Sales Department:  
Tel. +39 035 4282354  
Fax +39 035 4282400

Follow us on



**LOVATO Electric offices worldwide**

**United Kingdom**

LOVATO ELECTRIC LTD  
Tel. +44 8458 110023  
[www.Lovato.co.uk](http://www.Lovato.co.uk)

**Germany**

LOVATO ELECTRIC GmbH  
Tel. +49 7243 7669370  
[www.LovatoElectric.de](http://www.LovatoElectric.de)

**Spain**

LOVATO ELECTRIC S.L.U.  
Tel. +34 93 7812016  
[www.LovatoElectric.es](http://www.LovatoElectric.es)

**Poland**

LOVATO ELECTRIC SP. Z O.O.  
Tel. +48 71 7979010  
[www.LovatoElectric.pl](http://www.LovatoElectric.pl)

**Turkey**

LOVATO ELEKTRİK LTD  
Tel. +90 216 5401426-27-28  
[www.LovatoElectric.com.tr](http://www.LovatoElectric.com.tr)

**Romania**

LOVATO ELECTRIC SRL  
Tel. +40 372 074 155  
[www.LovatoElectric.ro](http://www.LovatoElectric.ro)

**Czech Republic**

LOVATO ELECTRIC S.R.O.  
Tel. +420 226 203203  
[www.LovatoElectric.cz](http://www.LovatoElectric.cz)

**United States**

LOVATO ELECTRIC INC.  
Tel. +1 757 5454700  
[www.LovatoUsa.com](http://www.LovatoUsa.com)

**Canada**

LOVATO ELECTRIC CORP.  
Tel. +1 450 6819200  
[www.Lovato.ca](http://www.Lovato.ca)

**United Arab Emirates**

LOVATO ELECTRIC ME FZE  
Tel. +971 4 3712713  
[www.LovatoElectric.ae](http://www.LovatoElectric.ae)

**China**

LOVATO ELECTRIC (SHANGHAI) CO LTD  
Tel. +86 21 62961837  
[www.LovatoElectric.cn](http://www.LovatoElectric.cn)