

MONOBLOCK SURGE PROTECTION DEVICES

SA0G TYPE



Type 1,2 and 3 Monoblock Iimp=12.5kA



SAOG...

Order code	Pole arrangement	Relay output	DIN modules	Qty per pkg	Wt
			n°	n°	[kg]

MONOBLOCK VERSION.

IEC impulse current Iimp (10/35µs) 12.5kA per pole.

SAOG1NA255	1P+N	NO	2	1	0.246
SAOG3NA255	3P+N	NO	4	1	0.456
SAOG3PA255	3P	NO	4	1	0.416
SAOG4PA255	4P	NO	4	1	0.442

General characteristic

The monoblock surge protection devices type SAOG... combines the performance of SPD type 1, 2 and 3 into a single product. It is ideal in all those systems of reduced extent to protect the load side downstream of main circuit breaker to terminal equipment. It protects against direct and indirect lightning strikes as well as induced overvoltage conditions. It can be installed inside main distribution boards and nearby terminal equipment.

Operational characteristics

- IEC maximum continuous operating U_c : 255VAC
- IEC maximum discharge current I_{max} (8/20µs): 50kA per pole
- IEC rated discharge current I_n (8/20µs): 20kA per pole
- Backup fuse (gG) necessary only in case of fuse on power >250A:
 - without derating Iimp: 250A
 - with derating Iimp=10kA: 125A
- IEC degree of protection IP20.

Certifications and compliance

Certifications obtained: EAC.
Compliant with standards: IEC/EN/BS 61643-11.

Characteristics

Type	IEC rated voltage U_n	IEC voltage protection level U_p	Power installation system
	[V]	[kV]-LN	
SAG1NA...	240	1.5	TT, TN-S
SAG3NA...	240	1.5	TT, TN-S
SAG3PA...	240	1.5	TN-C
SAG4PA...	240	1.5	TN-S

SPARK GAP technology

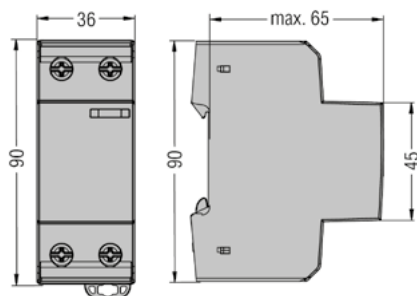
Thanks to the integrated spark gap technology, SAOG... type surge protection devices are "no leakage current" and are therefore suitable for protecting sensitive electronic equipment in close proximity to the service entrance, such as smart metering applications.

This technology allows installation upstream of energy meters, as it does not influence the measurement of consumed energy.

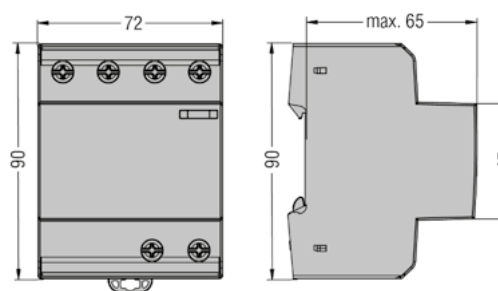


Dimensions

SAOG1NA255

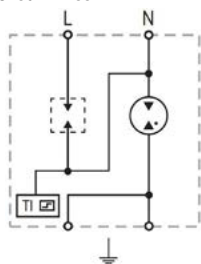


SAOG3NA255 - SAOG3PA255 - SAOG4PA255

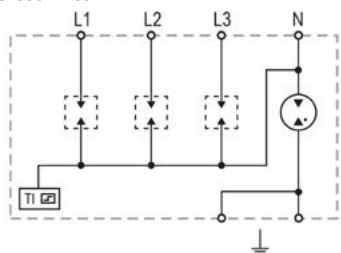


Wiring diagrams

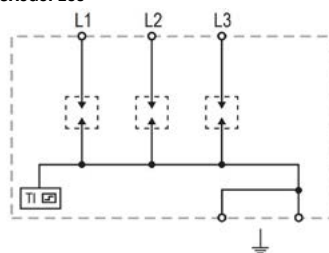
SAOG1NA255



SAOG3NA255



SAOG3P255



SAOG4P255

