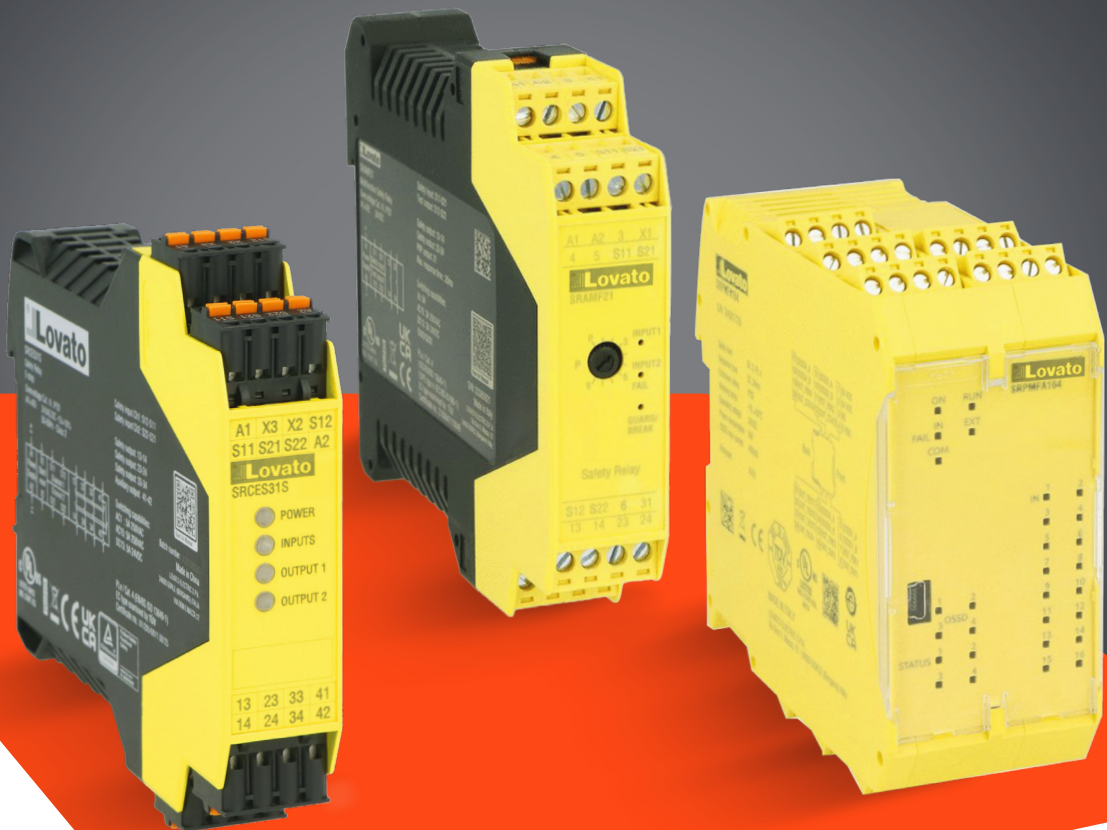


SAFETY RELAYS



SAFETY RELAYS

LOVATO Electric safety relays are designed to **connect, control** and **monitor safety components** within a machine or industrial plant. They are used to monitor signals from safety devices such as emergency stops, photoelectric barriers, RFID sensors, etc., and to ensure the safe shutdown of machinery or plants in the event of a fault, emergency, or during maintenance operations.

The LOVATO Electric range includes **single-function versions** for applications such as emergency stops, safety accesses, two-hand control devices and devices with OSSD, **multifunction versions** that integrate all the main safety functions into a single device and an **advanced version**, which features a high number of inputs and outputs and incorporates programmable logic for managing more complex systems.

SRA SERIES

- **Single-function versions** for the control of photoelectric barriers, two-hand control devices, laser scanners and RFID
- **Multifunction version** SRAMF21 configurable with a frontal trimmer, that combines all the main safety functions into a single product
- Version with 2 NO safety outputs (SRASM20) and versions with 2 NO safety outputs and 1 PNP output (SRA...21)
- Optional expansion module with 4 NO safety outputs and 1 NC auxiliary output
- Performance level up to **Cat. 4, PLe** according to EN/ISO 13849-1 and **SIL3** according to EN 61508
- Front LED for alarm diagnostics
- Removable screw terminal connection.



SRC SERIES

- **Single-function versions** for the control of emergency stops, safety accesses, magnetic safety switches, safety limit switches, electromechanical interlocks
- Performance level up to **Cat. 4, PLe** according to EN/ISO 13849-1 and **SIL3** according to EN 61508
- Version with 2 NO safety outputs (SRCES20...) or 3 NO safety outputs and 1 NC auxiliary output (SRCES31...)
- Optional expansion module with 4 NO safety outputs and 1 NC auxiliary output
- Front LEDs for status signaling
- Removable screw or spring-clamp (**push-in**) terminal connection.

I HIGH SAFETY PERFORMANCE I ADVANCED **PROGRAMMABLE VERSION I COMPACT DESIGN**

SAFETY INTEGRITY LEVEL

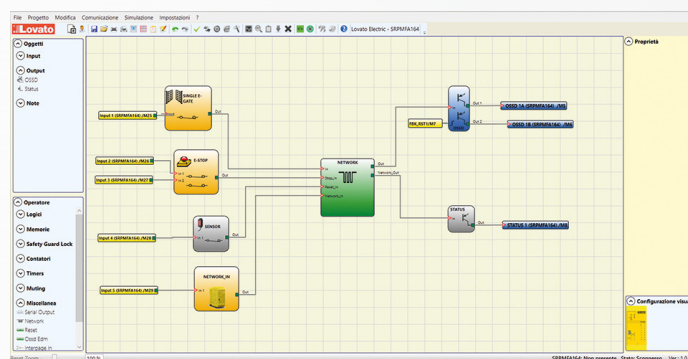
SIL 3

SIL 3 - PL e



SRP SERIES

- **Programmable version** SRPMFA164 for managing more complex systems
- Logic configurable via software freely downloadable from www.lovatoelectric.com
- Performance level up to **Cat. 4, PL e** according to EN/ISO 13849-1 and **SIL3** according to EN 61508
- High number of built-in I/Os: 16 digital inputs, 4 restart/EDM inputs, 4 OSSD safety outputs, 4 status outputs and 4 test outputs
- Front LEDs for status signaling
- Reduction of wiring time
- Removable screw terminal connection.



	SRCES20 ①	SRCES31①	SRATH21	SRALC21	SRAMS20	SRAMF21②	SRPMFA164③
Emergency stops	•	•				•	•
Safety limit switches	•	•				•	•
Magnetic sensors	•	•				•	•
Two-hand control devices			•			•	•
Safety devices with OSSD outputs (light curtains, laser scanner, RFID...)				•	•	•	•
Mechanical safety interlocks	•	•				•	•

① Add S for spring-clamp terminals (push-in)

② Monitoring of a single safety device, selectable from the listed options

③ Monitoring of up to 16 devices with a single safety relay, with programmable logic.



SAFETY RELAYS



LOVATO ELECTRIC S.P. A.

via Don E. Mazza, 12
24020 Gorle (Bergamo) - Italy
tel +39 035 4282111
info@LovatoElectric.com

www.LovatoElectric.com

