

Product designation				Power contactor	
Product type designation				DPBG12	
<b>Contact characteristics</b>					
Number of poles		Nr.	3		
Operational frequency		min	Hz	25	
		max	Hz	400	
<b>Mechanical features</b>					
Operating position		normal allowable	Vertical plan ±30°		
	Fixing	Screw / DIN rail 35mm			
Weight		g	180		
<b>Operations</b>					
Mechanical life		cycles	20000000		
Electrical life		cycles	500000		
<b>Safety related data</b>					
Performance level B10d according to EN/ISO 13489-1		rated load mechanical load	cycles	500000	
			cycles	20000000	
Mirror contacts according to IEC/EN 60947-4-1				yes	
EMC compatibility				yes	
<b>AC coil operating</b>					
Rated AC voltage at 60Hz		V	120		
AC operating voltage	of 60Hz coil powered at 60Hz pick-up	min	%Us	75	
		max	%Us	115	
	drop-out	min	%Us	20	
		max	%Us	55	
	<b>AC average coil consumption at 20°C</b>				
	of 50/60Hz coil powered at 50Hz	in-rush	VA	30	
holding		VA	4		
of 50/60Hz coil powered at 60Hz	in-rush	VA	25		
	holding	VA	3		
of 60Hz coil powered at 60Hz	in-rush	VA	30		
	holding	VA	4		
Dissipation at holding ≤20°C 50Hz		W	0.95		
<b>Max cycles frequency</b>					
Mechanical operation		cycles/h	3600		
<b>Operating times</b>					
Average time for Us control in AC	Closing NO	min	ms	12	
		max	ms	21	
	Opening NO				

		min	ms	9
		max	ms	18
	Closing NC			
		min	ms	17
		max	ms	26
	Opening NC			
		min	ms	7
		max	ms	17
<hr/>				
	in DC			
	Closing NO			
		min	ms	18
		max	ms	25
	Opening NO			
		min	ms	2
		max	ms	3
	Closing NC			
		min	ms	3
		max	ms	5
	Opening NC			
		min	ms	11
		max	ms	17

**UL technical data**

Full-load current (FLA) for three-phase AC motor

at 480V	A	11
at 600V	A	11

Locked rotor current (LRA)

A	84
---	----

Yielded mechanical performance

for single-phase AC motor

110/120V	HP	0.5
230V	HP	1.5

for three-phase AC motor

200/208V	HP	3
220/230V	HP	3
460/480V	HP	7.5
575/600V	HP	10

General USE

Contactor

AC current	A	20
------------	---	----

Short-circuit protection fuse, 600V

High fault

Short circuit current	kA	100
Fuse rating	A	30
Fuse class		J

Standard fault

Short circuit current	kA	5
Fuse rating	A	30
Fuse class		RK5

Contact rating of auxiliary contacts according to UL

A600 - Q600

**Ambient conditions**

Temperature

Operating temperature

min	°C	-50
max	°C	+70

Storage temperature

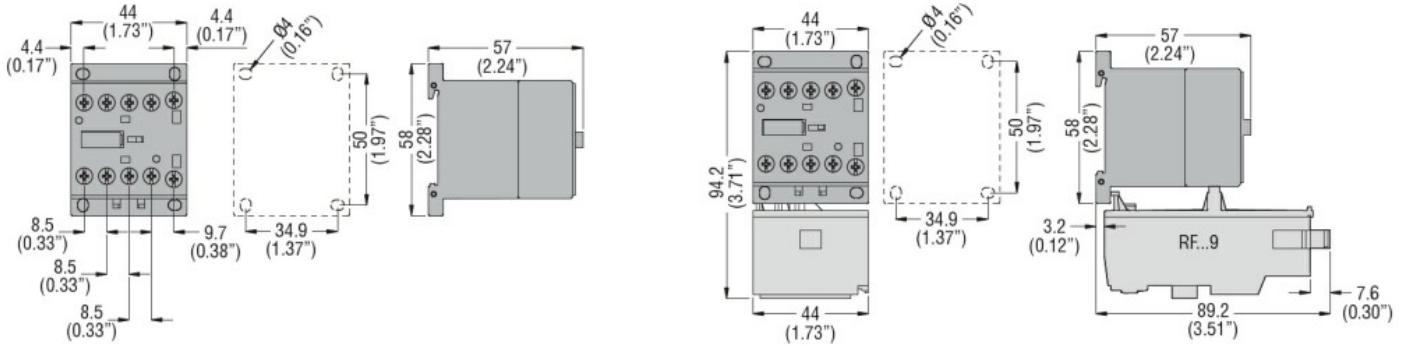
min	°C	-60
max	°C	+80
Max altitude	m	3000

**Resistance & Protection**

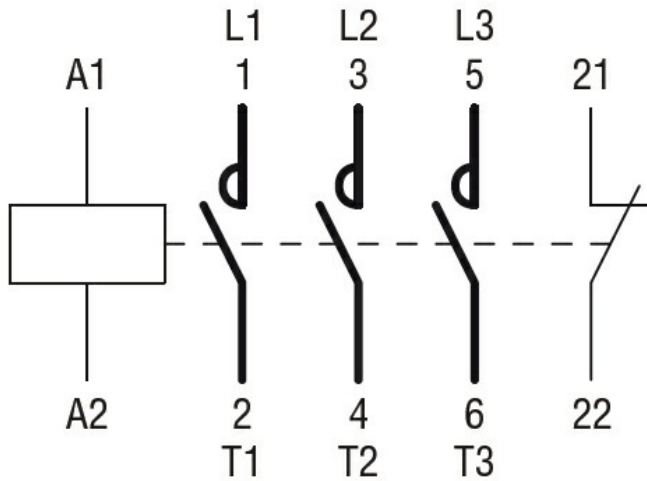
Pollution degree

3

**Dimensions**



**Wiring diagrams**



**Certifications and compliance**

Compliance

- CSA C22.2 n° 60947-1
- CSA C22.2 n° 60947-4-78
- UL 60947-1
- UL 60947-4-1

Certificates

cULus

**ETIM classification**

ETIM 8.0

EC000066 -  
Power contactor,  
AC switching