

Product designation				Auxiliary contactor	
Product type designation				DPBG12	
Contact characteristics					
Number of poles			Nr.	3	
Operational frequency			min	Hz 25	
			max	Hz 400	
Mechanical features					
Operating position	normal allowable		Vertical plan ±30°		
			Screw / DIN rail 35mm		
Fixing				g 200	
Weight				g 200	
Operations					
Mechanical life			cycles	20000000	
Electrical life			cycles	500000	
Safety related data					
Performance level B10d according to EN/ISO 13489-1					
		rated load mechanical load	cycles	500000	
			cycles	20000000	
Mirror contacts according to IEC/EN 609474-4-1				YES	
EMC compatibility				YES	
AC coil operating					
Rated AC voltage at 60Hz			V	24	
AC operating voltage	of 60Hz coil powered at 60Hz pick-up				
			min	%Us 75	
			max	%Us 115	
	drop-out				
			min	%Us 20	
			max	%Us 55	
AC average coil consumption at 20°C	of 50/60Hz coil powered at 50Hz				
			in-rush	VA 30	
			holding	VA 4	
	of 50/60Hz coil powered at 60Hz				
			in-rush	VA 25	
			holding	VA 3	
	of 60Hz coil powered at 60Hz				
			in-rush	VA 30	
			holding	VA 4	
	Dissipation at holding ≤20°C 50Hz			W 0.9	
	Max cycles frequency				
	Mechanical operation				cycles/h 3600
Operating times					
Average time for Us control in AC	Closing NO				
			min	ms 12	
			max	ms 21	

Opening NO	min	ms	9
	max	ms	18
Closing NC	min	ms	17
	max	ms	26
Opening NC	min	ms	7
	max	ms	17
<hr/>			
in DC			
Closing NO	min	ms	18
	max	ms	25
Opening NO	min	ms	2
	max	ms	3
Closing NC	min	ms	3
	max	ms	5
Opening NC	min	ms	11
	max	ms	17

UL technical data

Full-load current (FLA) for three-phase AC motor

at 480V	A	11
at 600V	A	11

Locked rotor current (LRA)

A	84
---	----

Yielded mechanical performance

for single-phase AC motor

110/120V	HP	0.5
230V	HP	1.5

for three-phase AC motor

200/208V	HP	3
220/230V	HP	3
460/480V	HP	7.5
575/600V	HP	10

General USE

Contactor

AC current	A	20
------------	---	----

Short-circuit protection fuse, 600V

High fault

Short circuit current	kA	100
Fuse rating	A	30
Fuse class		J

Standard fault

Short circuit current	kA	5
Fuse rating	A	30
Fuse class		RK5

Contact rating of auxiliary contacts according to UL

A600 - Q600

Ambient conditions

Temperature

Operating temperature

min	°C	-50
max	°C	+70

Storage temperature

min	°C	-60
max	°C	+80

Max altitude

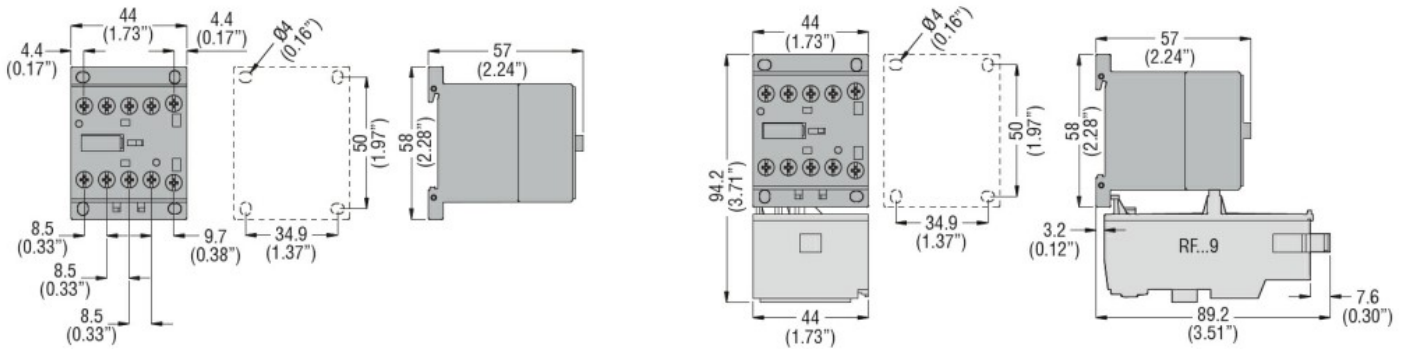
m	3000
---	------

Resistance & Protection

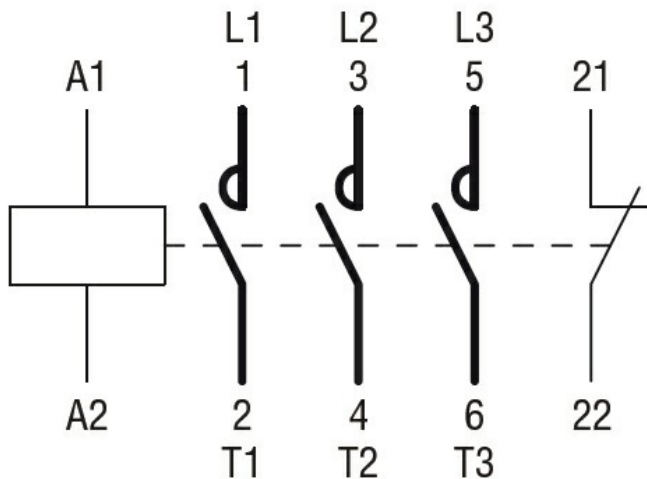
Pollution degree

3

Dimensions



Wiring diagrams



Certifications and compliance

Compliance

CSA C22.2 n° 60947-1
CSA C22.2 n° 60947-4-77
UL 60947-1
UL 60947-4-1

Certificates

cULus

ETIM classification

ETIM 8.0

EC000066 -
Power contactor,
AC switching