



Product designation				Power contactor
Product type designation				DPBG12
<b>Contact characteristics</b>				
Number of poles	Nr.			3
Operational frequency	min	Hz	25	
	max	Hz	400	
<b>Mechanical features</b>				
Operating position	normal	Vertical plan		
	allowable	±30°		
Fixing				Screw / DIN rail 35mm
Weight	g	181		
<b>Operations</b>				
Mechanical life	cycles	20000000		
Electrical life	cycles	500000		
<b>Safety related data</b>				
Performance level B10d according to EN/ISO 13489-1	rated load	cycles	500000	
	mechanical load	cycles	20000000	
Mirror contacts according to IEC/EN 609474-4-1				yes
EMC compatibility				yes
<b>AC coil operating</b>				
Rated AC voltage at 60Hz	V	24		
AC operating voltage	of 60Hz coil powered at 60Hz			
	pick-up	min	%Us	75
		max	%Us	115
	drop-out	min	%Us	20
max		%Us	55	
AC average coil consumption at 20°C	of 50/60Hz coil powered at 50Hz			
	in-rush	VA	30	
		holding	VA	4
	of 50/60Hz coil powered at 60Hz			
in-rush	VA	25		
	holding	VA	3	
of 60Hz coil powered at 60Hz				
in-rush	VA	30		
	holding	VA	4	
Dissipation at holding ≤20°C 50Hz	W	0.95		
<b>Max cycles frequency</b>				

Mechanical operation cycles/h 3600

**Operating times**

Average time for Us control  
in AC

Closing NO	min	ms	12
	max	ms	21
Opening NO	min	ms	9
	max	ms	18
Closing NC	min	ms	17
	max	ms	26
Opening NC	min	ms	7
	max	ms	17

in DC

Closing NO	min	ms	18
	max	ms	25
Opening NO	min	ms	2
	max	ms	3
Closing NC	min	ms	3
	max	ms	5
Opening NC	min	ms	11
	max	ms	17

**UL technical data**

Full-load current (FLA) for three-phase AC motor

at 480V	A	11
at 600V	A	11

Locked rotor current (LRA)

A	84
---	----

Yielded mechanical performance

for single-phase AC motor

110/120V	HP	0.5
230V	HP	1.5

for three-phase AC motor

200/208V	HP	3
220/230V	HP	3
460/480V	HP	7.5
575/600V	HP	10

General USE

Contactor

AC current	A	20
------------	---	----

Short-circuit protection fuse, 600V

High fault

Short circuit current	kA	100
Fuse rating	A	30
Fuse class	J	

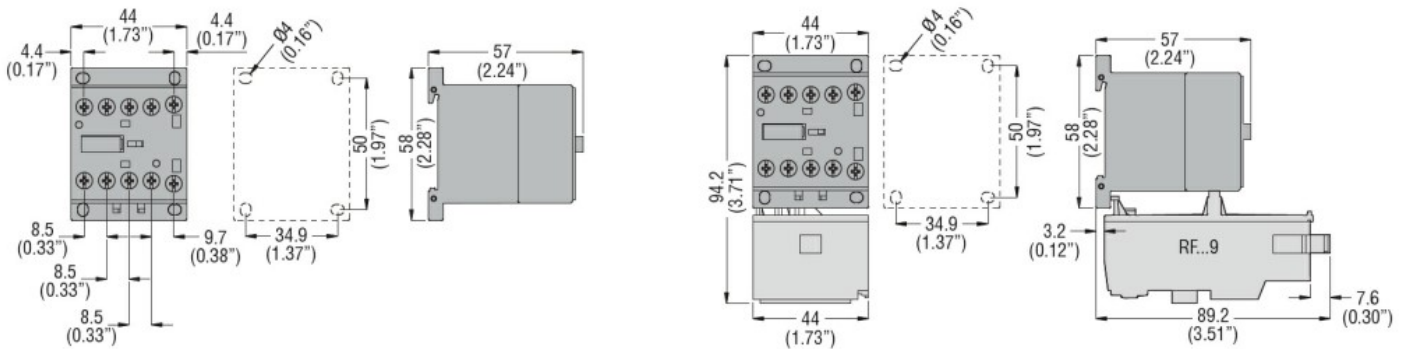
Standard fault

Short circuit current	kA	5
Fuse rating	A	30

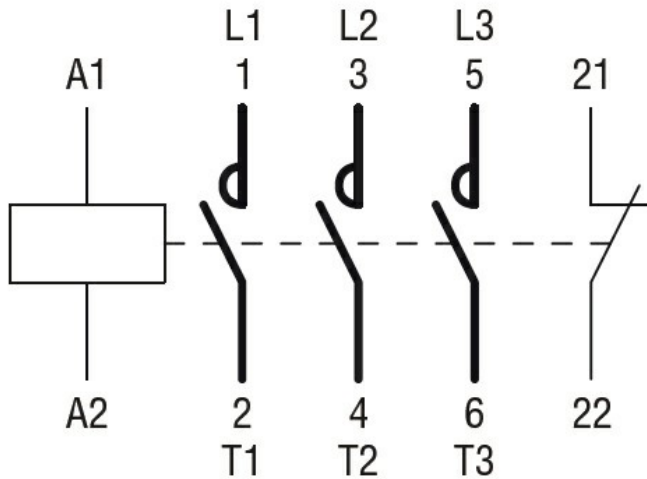
	Fuse class	RK5
Contact rating of auxiliary contacts according to UL		A600 - Q600
<b>Ambient conditions</b>		
Temperature		
Operating temperature	min °C	-50
	max °C	+70
Storage temperature	min °C	-60
	max °C	+80
Max altitude	m	3000

<b>Resistance &amp; Protection</b>		
Pollution degree		3

**Dimensions**



**Wiring diagrams**



**Certifications and compliance**

Compliance	CSA C22.2 n° 60947-1
	CSA C22.2 n° 60947-4-71
	UL 60947-1
	UL 60947-4-1

Certificates	cULus
--------------	-------

**ETIM classification**

ETIM 8.0	EC000066 - Power contactor, AC switching
----------	--