

Product designation				Power contactor
Product type designation				DPBF50
<b>Contact characteristics</b>				
Number of poles			Nr.	3
Operational frequency			min	Hz 25
			max	Hz 400
<b>Mechanical features</b>				
Operating position	normal allowable		Vertical plan ±30°	
			Screw / DIN rail 35mm	
Fixing				
Weight			g	1020
<b>Operations</b>				
Mechanical life			cycles	15000000
Electrical life			cycles	1400000
<b>Safety related data</b>				
Performance level B10d according to EN/ISO 13489-1	rated load		cycles	1400000
	mechanical load		cycles	15000000
Mirror contacts according to IEC/EN 60947-4-1				yes
EMC compatibility				yes
<b>AC coil operating</b>				
Rated AC voltage at 50/60Hz			V	24
Rated AC voltage at 60Hz			V	24
AC operating voltage	of 50/60Hz coil powered at 50Hz			
	pick-up		min	%Us 75
			max	%Us 115
	drop-out		min	%Us 20
			max	%Us 55
	of 50/60Hz coil powered at 60Hz			
	pick-up		min	%Us 80
			max	%Us 115
	drop-out		min	%Us 20
			max	%Us 55
	of 60Hz coil powered at 60Hz			
	pick-up		min	%Us 80
		max	%Us 110	
drop-out		min	%Us 20	
		max	%Us 55	
AC average coil consumption at 20°C				
of 50/60Hz coil powered at 50Hz				
		in-rush	VA 30	
		holding	VA 4	
of 50/60Hz coil powered at 60Hz				

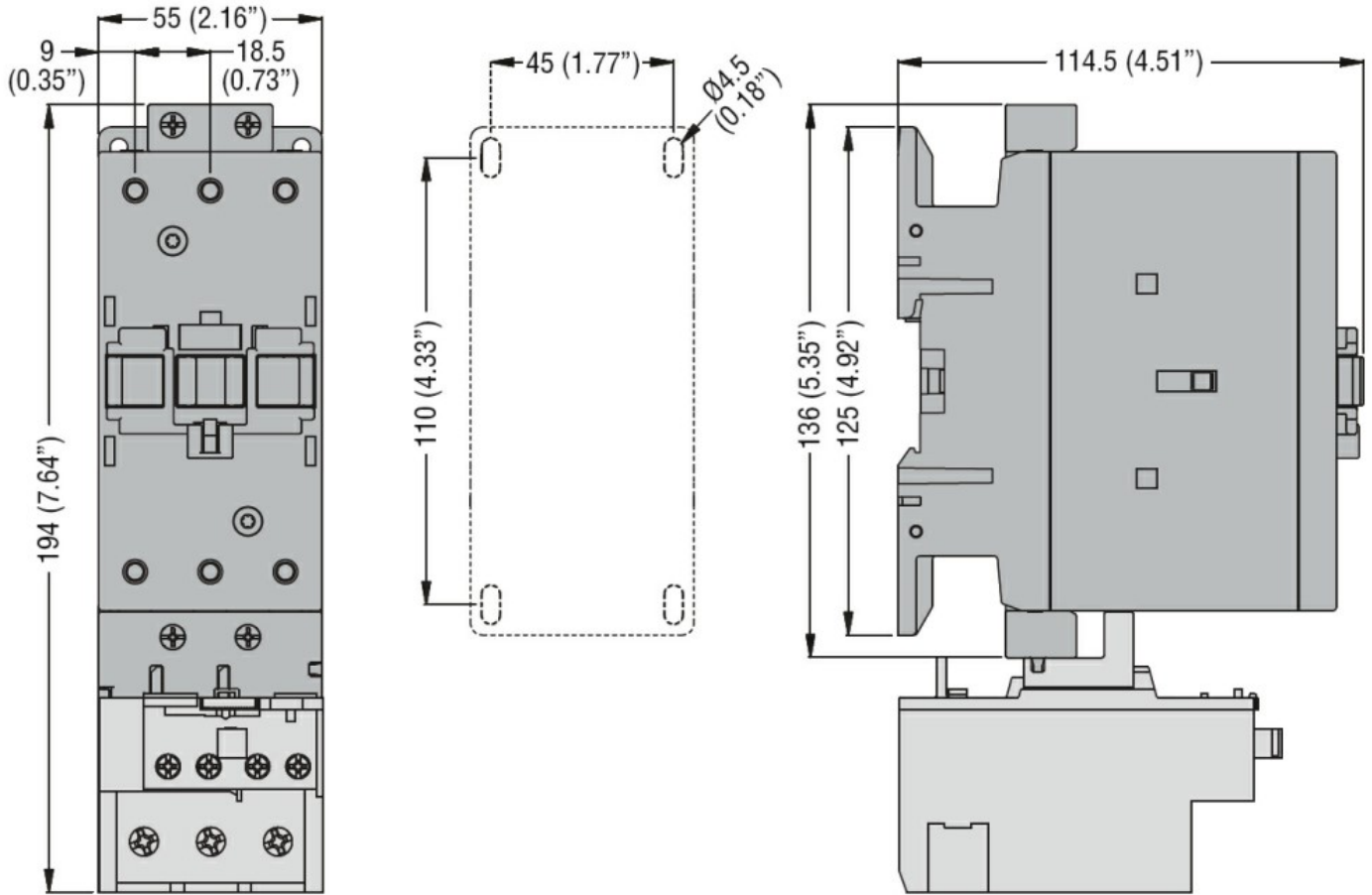
		in-rush	VA	25
		holding	VA	3
of 60Hz coil powered at 60Hz				
		in-rush	VA	210
		holding	VA	15
Dissipation at holding ≤20°C 50Hz			W	5
<b>Max cycles frequency</b>				
Mechanical operation			cycles/h	3600
<b>Operating times</b>				
Average time for Us control				
	in AC			
		Closing NO		
			min	ms
			max	ms
		Opening NO		
			min	ms
			max	ms
		Closing NC		
			min	ms
			max	ms
		Opening NC		
			min	ms
			max	ms
	in DC			
		Closing NO		
			min	ms
			max	ms
		Opening NO		
			min	ms
			max	ms
<b>UL technical data</b>				
Full-load current (FLA) for three-phase AC motor				
		at 600V	A	70
Locked rotor current (LRA)			A	420
General USE				
	Contactor			
		AC current	A	90
Short-circuit protection fuse, 600V				
	High fault			
		Short circuit current	kA	100
		Fuse rating	A	150
		Fuse class		J
	Standard fault			
		Short circuit current	kA	5
		Fuse rating	A	150
		Fuse class		RK5
<b>Ambient conditions</b>				
Temperature				
	Operating temperature			
			min	°C
			max	°C
	Storage temperature			
			min	°C
			max	°C
Max altitude			m	3000

**Resistance & Protection**

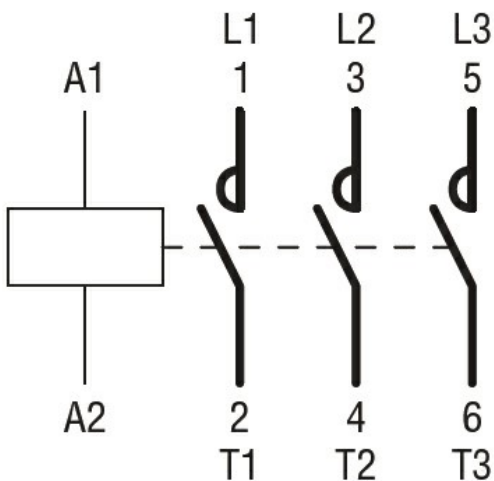
Pollution degree

3

**Dimensions**



**Wiring diagrams**



**Certifications and compliance**

Compliance

- CSA C22.2 n° 60947-1
- CSA C22.2 n° 60947-4-60
- UL 60947-1
- UL 60947-4-1

Certificates

cULus

ETIM classification

ETIM 8.0

EC000066 -  
Power contactor,  
AC switching