

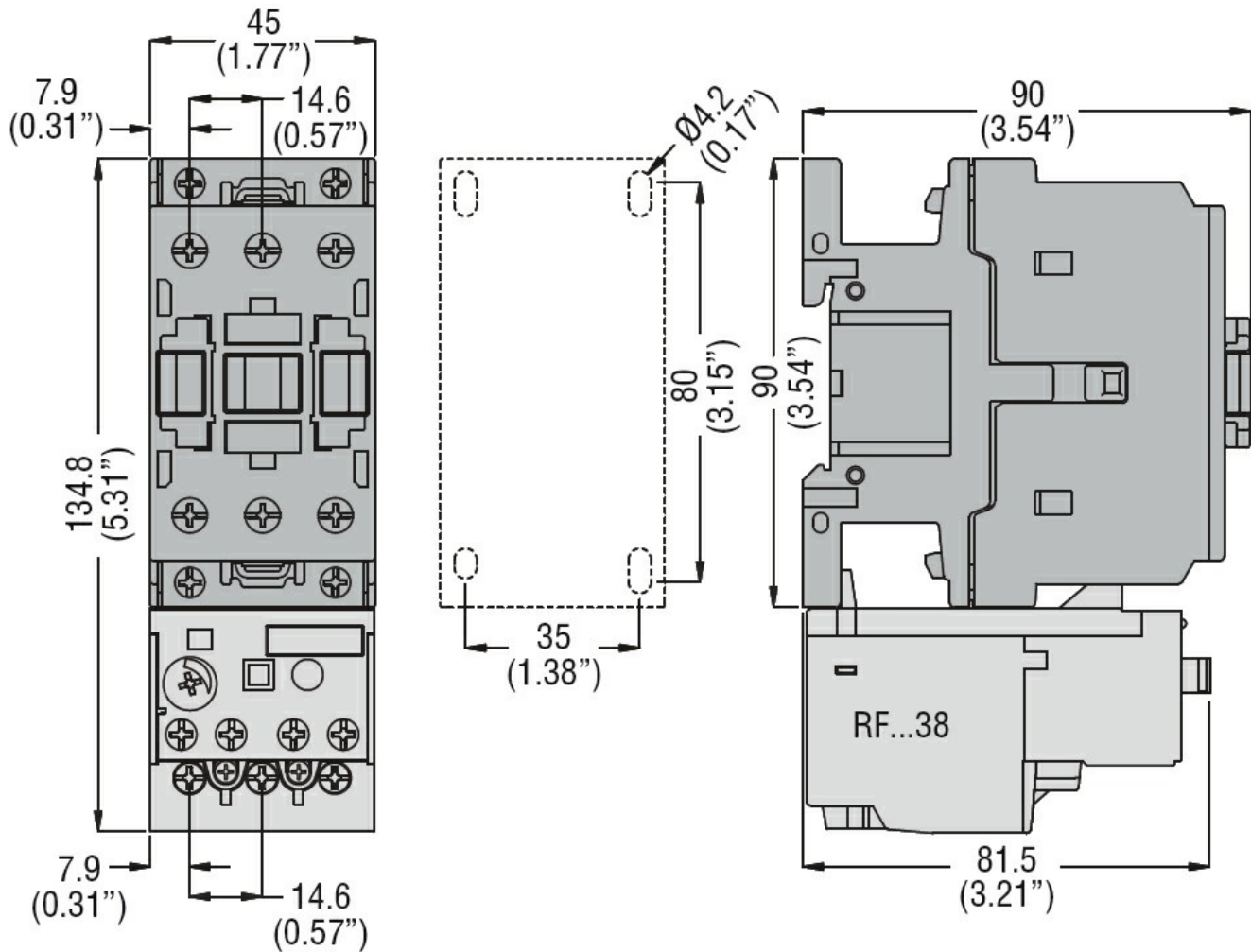
Product designation				Power contactor		
Product type designation				DPBF32		
Contact characteristics						
Number of poles		Nr.	3			
Operational frequency		min	Hz	25		
		max	Hz	400		
Mechanical features						
Operating position		normal allowable	Vertical plan ±30°			
	Fixing		Screw / DIN rail 35mm			
Weight		g	432			
Operations						
Mechanical life		cycles	20000000			
Electrical life		cycles	1600000			
Safety related data						
Performance level B10d according to EN/ISO 13489-1		rated load	cycles	1600000		
		mechanical load	cycles	20000000		
Mirror contacts according to IEC/EN 60947-4-1			yes			
EMC compatibility			yes			
AC coil operating						
Rated AC voltage at 50/60Hz		V	24			
Rated AC voltage at 60Hz		V	575			
AC operating voltage	of 50/60Hz coil powered at 50Hz	pick-up	min	%Us	80	
			max	%Us	110	
		drop-out	min	%Us	20	
			max	%Us	55	
		of 50/60Hz coil powered at 60Hz	pick-up	min	%Us	85
				max	%Us	110
	drop-out		min	%Us	20	
			max	%Us	55	
	of 60Hz coil powered at 60Hz		pick-up	min	%Us	80
				max	%Us	110
		drop-out	min	%Us	20	
			max	%Us	55	
AC average coil consumption at 20°C		of 50/60Hz coil powered at 50Hz		in-rush	VA	75
				holding	VA	9
	of 50/60Hz coil powered at 60Hz					

		in-rush	VA	70	
		holding	VA	6.5	
of 60Hz coil powered at 60Hz					
		in-rush	VA	75	
		holding	VA	9	
Dissipation at holding ≤20°C 50Hz				W	2.5
Max cycles frequency					
Mechanical operation				cycles/h	3600
Operating times					
Average time for Us control					
in AC					
	Closing NO	min	ms	8	
		max	ms	24	
	Opening NO	min	ms	5	
		max	ms	15	
	Closing NC	min	ms	9	
		max	ms	20	
	Opening NC	min	ms	9	
		max	ms	17	
UL technical data					
Full-load current (FLA) for three-phase AC motor					
		at 600V	A	50	
Locked rotor current (LRA)				A	300
Yielded mechanical performance					
for single-phase AC motor					
		110/120V	HP	3	
		230V	HP	10	
for three-phase AC motor					
		200/208V	HP	15	
		220/230V	HP	15	
		460/480V	HP	30	
		575/600V	HP	40	
General USE					
Contactor					
		AC current	A	55	
Short-circuit protection fuse, 600V					
Standard fault					
		Short circuit current	kA	5	
		Fuse rating	A	125	
		Fuse class		RK5	
Ambient conditions					
Temperature					
Operating temperature					
		min	°C	-50	
		max	°C	70	
Storage temperature					
		min	°C	-60	
		max	°C	80	
Max altitude				m	3000
Resistance & Protection					

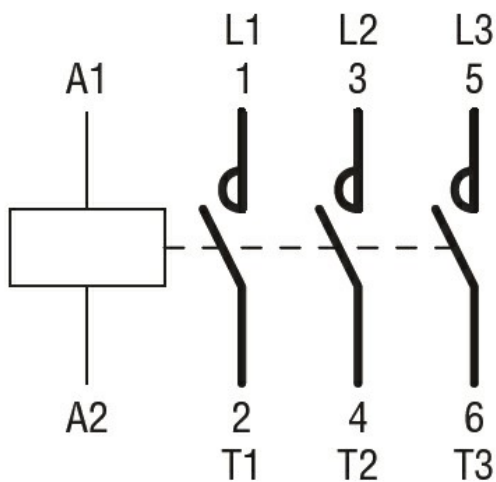
Pollution degree

3

Dimensions



Wiring diagrams



Certifications and compliance

Compliance

CSA C22.2 n° 60947-1
 CSA C22.2 n° 60947-4-53
 UL 60947-1

UL 60947-4-1

Certificates

cULus

ETIM classification

ETIM 8.0

EC000066 -
Power contactor,
AC switching