



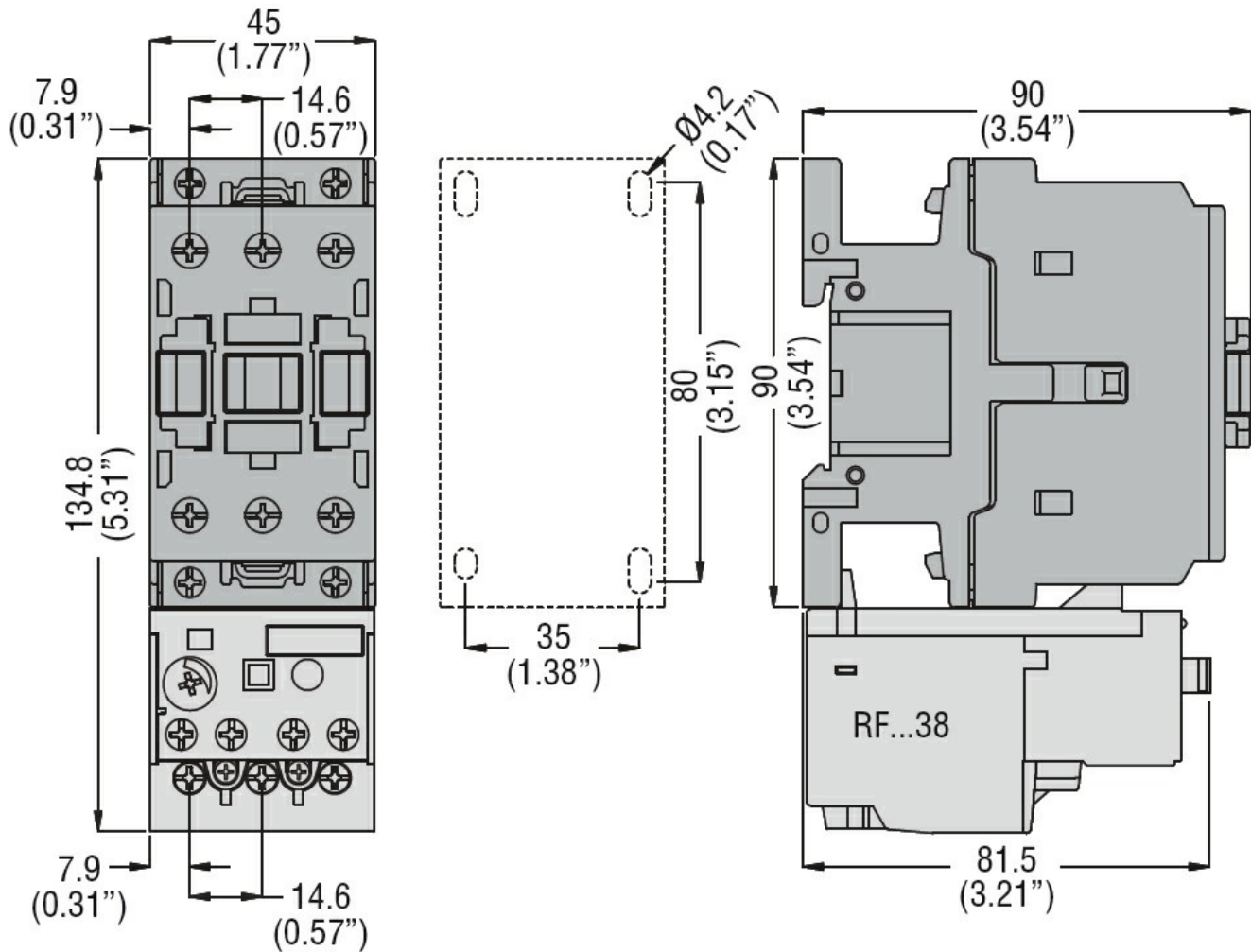
Product designation				Power contactor
Product type designation				DPBF26
Contact characteristics				
Number of poles			Nr.	3
Operational frequency	min	Hz	25	
	max	Hz	400	
Mechanical features				
Operating position	normal		Vertical plan	
	allowable		±30°	
Fixing				Screw / DIN rail 35mm
Weight				g 429
Operations				
Mechanical life			cycles	20000000
Electrical life			cycles	1600000
Safety related data				
Performance level B10d according to EN/ISO 13489-1	rated load	cycles	1600000	
	mechanical load	cycles	20000000	
Mirror contacts according to IEC/EN 60947-4-1				yes
EMC compatibility				yes
AC coil operating				
Rated AC voltage at 50/60Hz			V	24
AC operating voltage	of 50/60Hz coil powered at 50Hz			
	pick-up	min	%Us	80
max		%Us	110	
drop-out	min	%Us	20	
	max	%Us	55	
of 50/60Hz coil powered at 60Hz	pick-up			
	min	%Us	85	
drop-out	max	%Us	110	
	min	%Us	20	
	max	%Us	55	
	AC average coil consumption at 20°C			
of 50/60Hz coil powered at 50Hz	in-rush	VA	75	
	holding	VA	9	
of 50/60Hz coil powered at 60Hz				

		in-rush	VA	70
		holding	VA	6.5
of 60Hz coil powered at 60Hz				
		in-rush	VA	75
		holding	VA	9
Dissipation at holding ≤20°C 50Hz			W	2.5
Max cycles frequency				
Mechanical operation			cycles/h	3600
Operating times				
Average time for Us control				
in AC				
	Closing NO	min	ms	8
		max	ms	24
	Opening NO	min	ms	5
		max	ms	15
	Closing NC	min	ms	9
		max	ms	20
	Opening NC	min	ms	9
		max	ms	17
UL technical data				
Full-load current (FLA) for three-phase AC motor				
		at 600V	A	40
Locked rotor current (LRA)			A	240
Yielded mechanical performance				
for single-phase AC motor				
		110/120V	HP	3
		230V	HP	7.5
for three-phase AC motor				
		200/208V	HP	10
		220/230V	HP	10
		460/480V	HP	30
		575/600V	HP	30
General USE				
Contactor				
		AC current	A	45
Short-circuit protection fuse, 600V				
Standard fault				
		Short circuit current	kA	5
		Fuse rating	A	125
		Fuse class		RK5
Ambient conditions				
Temperature				
Operating temperature				
		min	°C	-50
		max	°C	70
Storage temperature				
		min	°C	-60
		max	°C	80
Max altitude			m	3000
Resistance & Protection				

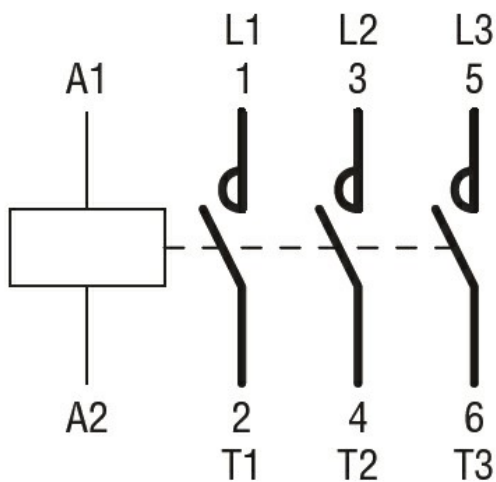
Pollution degree

3

Dimensions



Wiring diagrams



Certifications and compliance

Compliance

CSA C22.2 n° 60947-1
CSA C22.2 n° 60947-4-43
UL 60947-1

UL 60947-4-1

Certificates

cULus

ETIM classification

ETIM 8.0

EC000066 -
Power contactor,
AC switching