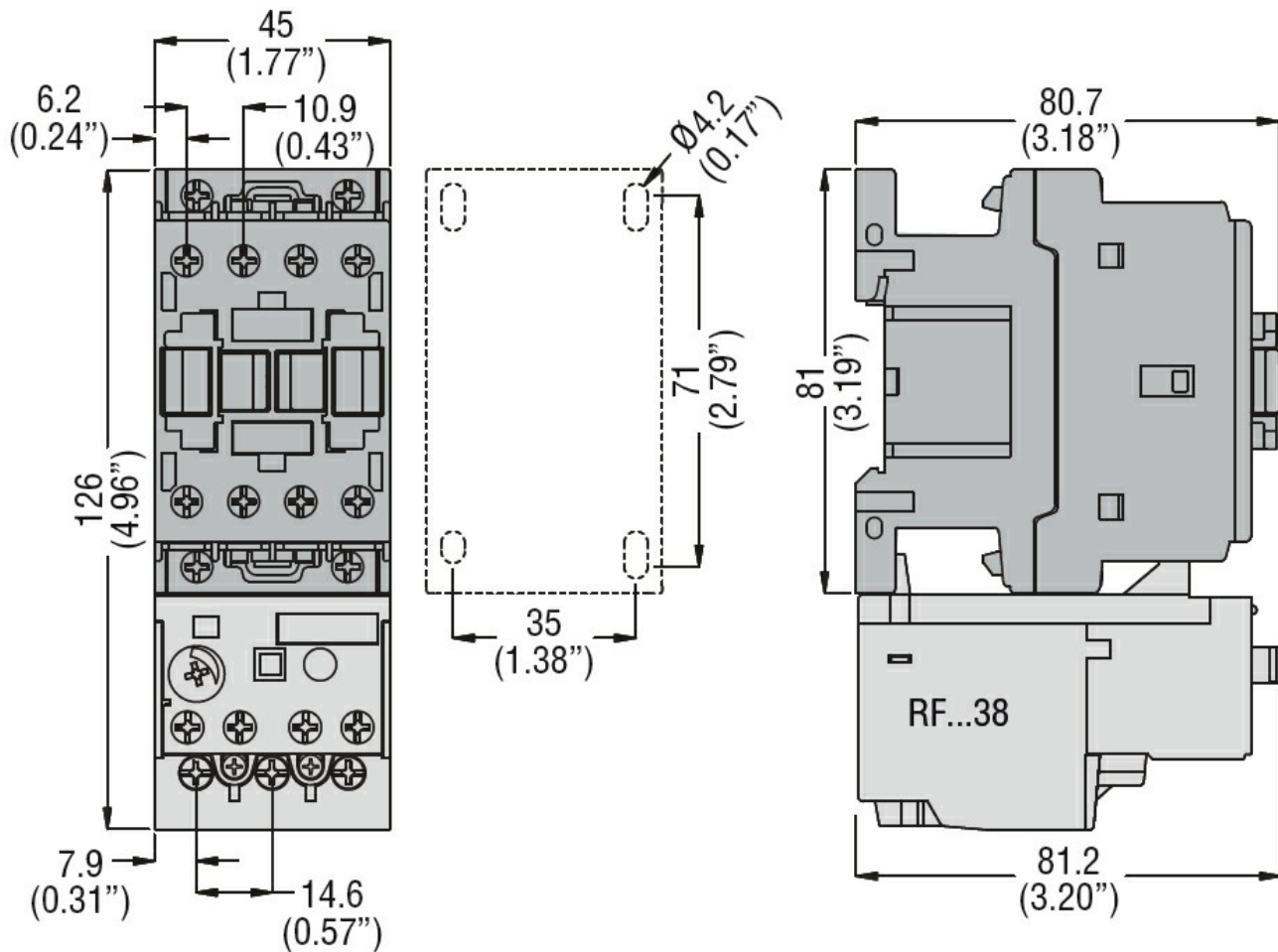


Product designation				Power contactor
Product type designation				DPBF18
<b>Contact characteristics</b>				
Number of poles			Nr.	3
Operational frequency			min	Hz 25
			max	Hz 400
<b>Mechanical features</b>				
Operating position	normal allowable		Vertical plan ±30°	
			Screw / DIN rail 35mm	
Fixing				
Weight			g	368
<b>Operations</b>				
Mechanical life			cycles	20000000
Electrical life			cycles	1600000
<b>Safety related data</b>				
Performance level B10d according to EN/ISO 13489-1	rated load		cycles	1600000
	mechanical load		cycles	20000000
Mirror contacts according to IEC/EN 60947-4-1				yes
EMC compatibility				yes
<b>AC coil operating</b>				
Rated AC voltage at 50/60Hz			V	24
Rated AC voltage at 60Hz			V	575
AC operating voltage	of 50/60Hz coil powered at 50Hz			
	pick-up		min	%Us 80
			max	%Us 110
	drop-out		min	%Us 20
			max	%Us 55
	of 50/60Hz coil powered at 60Hz			
	pick-up		min	%Us 85
			max	%Us 110
	drop-out		min	%Us 20
			max	%Us 55
	of 60Hz coil powered at 60Hz			
	pick-up		min	%Us 80
		max	%Us 110	
drop-out		min	%Us 20	
		max	%Us 55	
AC average coil consumption at 20°C				
of 50/60Hz coil powered at 50Hz				
		in-rush	VA	75
		holding	VA	9
of 50/60Hz coil powered at 60Hz				

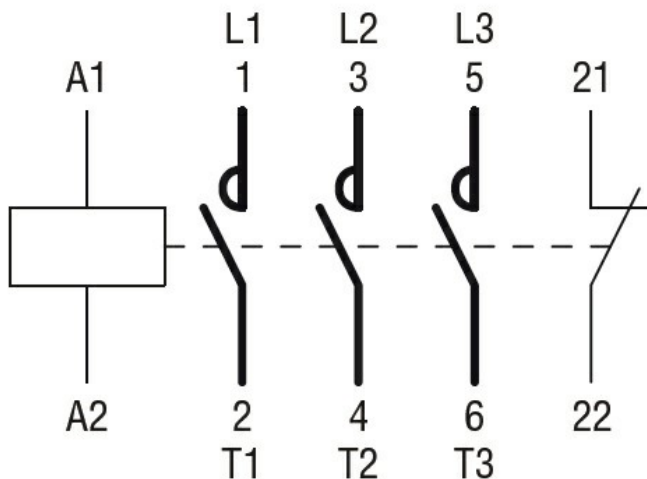
	in-rush	VA	70
	holding	VA	6.5
of 60Hz coil powered at 60Hz			
	in-rush	VA	75
	holding	VA	9
Dissipation at holding ≤20°C 50Hz		W	2.5
<b>Max cycles frequency</b>			
Mechanical operation		cycles/h	3600
<b>Operating times</b>			
Average time for Us control			
in AC			
	Closing NO		
		min	ms 8
		max	ms 24
	Opening NO		
		min	ms 10
		max	ms 20
	Closing NC		
		min	ms 14
		max	ms 28
	Opening NC		
		min	ms 7
		max	ms 18
<b>UL technical data</b>			
Full-load current (FLA) for three-phase AC motor			
		at 600V	A 30
Locked rotor current (LRA)			
			A 180
Yielded mechanical performance			
for single-phase AC motor			
	110/120V	HP	2
	230V	HP	5
for three-phase AC motor			
	200/208V	HP	7.5
	220/230V	HP	7.5
	460/480V	HP	15
	575/600V	HP	20
<b>General USE</b>			
Contactor			
	AC current	A	32
Auxiliary contacts			
	AC voltage	V	600
	AC current	A	10
	DC voltage	V	250
	DC current	A	1
Short-circuit protection fuse, 600V			
Standard fault			
	Short circuit current	kA	5
	Fuse rating	A	100
	Fuse class		RK5
Contact rating of auxiliary contacts according to UL			A600 - P600
<b>Ambient conditions</b>			
Temperature			
Operating temperature			
	min	°C	-50

	max	°C	70
Storage temperature	min	°C	-60
	max	°C	80
Max altitude	m		3000

<b>Resistance &amp; Protection</b>			
Pollution degree			3
<b>Dimensions</b>			



**Wiring diagrams**



**Certifications and compliance**

Compliance

CSA C22.2 n° 60947-1

CSA C22.2 n° 60947-4-33

UL 60947-1

UL 60947-4-1

Certificates

cULus

ETIM classification

ETIM 8.0

EC000066 -  
Power contactor,  
AC switching