

| | | | | |
|--|------------------------------|----------------------------|--------------------|-----------------------|
| Product designation | | | | Power contactor |
| Product type designation | | | | DPBF18 |
| Contact characteristics | | | | |
| Number of poles | | | Nr. | 3 |
| Operational frequency | | | | |
| | min | Hz | 25 | |
| | max | Hz | 400 | |
| Mechanical features | | | | |
| Operating position | normal allowable | | Vertical plan ±30° | |
| Fixing | | | | Screw / DIN rail 35mm |
| Weight | | | g | 356 |
| Operations | | | | |
| Mechanical life | | | cycles | 20000000 |
| Electrical life | | | cycles | 1600000 |
| Safety related data | | | | |
| Performance level B10d according to EN/ISO 13489-1 | | | | |
| | | rated load mechanical load | cycles | 1600000 |
| | | | cycles | 20000000 |
| Mirror contacts according to IEC/EN 60947-4-1 | | | | yes |
| EMC compatibility | | | | yes |
| AC coil operating | | | | |
| Rated AC voltage at 60Hz | | | V | 120 |
| AC operating voltage | of 60Hz coil powered at 60Hz | | | |
| | pick-up | | | |
| | min | %Us | 80 | |
| | max | %Us | 110 | |
| | drop-out | | | |
| | min | %Us | 20 | |
| | max | %Us | 55 | |
| AC average coil consumption at 20°C | of 60Hz coil powered at 60Hz | | | |
| | in-rush | VA | 75 | |
| | holding | VA | 9 | |
| Dissipation at holding ≤20°C 50Hz | | | W | 2.5 |
| Max cycles frequency | | | | |
| Mechanical operation | | | | cycles/h 3600 |
| Operating times | | | | |
| Average time for Us control | in AC | | | |
| | Closing NO | | | |
| | min | ms | 8 | |
| | max | ms | 24 | |
| | Opening NO | | | |
| | min | ms | 10 | |
| | max | ms | 20 | |
| | Closing NC | | | |
| | min | ms | 14 | |
| | max | ms | 28 | |
| | Opening NC | | | |

| | | |
|-----|----|----|
| min | ms | 7 |
| max | ms | 18 |

UL technical data

Full-load current (FLA) for three-phase AC motor

| | | |
|---------|---|----|
| at 600V | A | 30 |
|---------|---|----|

Locked rotor current (LRA)

| | |
|---|-----|
| A | 180 |
|---|-----|

Yielded mechanical performance

for single-phase AC motor

| | | |
|----------|----|---|
| 110/120V | HP | 2 |
| 230V | HP | 5 |

for three-phase AC motor

| | | |
|----------|----|-----|
| 200/208V | HP | 7.5 |
| 220/230V | HP | 7.5 |
| 460/480V | HP | 15 |
| 575/600V | HP | 20 |

General USE

Contactor

| | | |
|------------|---|----|
| AC current | A | 32 |
|------------|---|----|

Auxiliary contacts

| | | |
|------------|---|-----|
| AC voltage | V | 600 |
| AC current | A | 10 |
| DC voltage | V | 250 |
| DC current | A | 1 |

Short-circuit protection fuse, 600V

Standard fault

| | | |
|-----------------------|----|-----|
| Short circuit current | kA | 5 |
| Fuse rating | A | 100 |
| Fuse class | | RK5 |

Contact rating of auxiliary contacts according to UL

A600 - P600

Ambient conditions

Temperature

Operating temperature

| | | |
|-----|----|-----|
| min | °C | -50 |
| max | °C | 70 |

Storage temperature

| | | |
|-----|----|-----|
| min | °C | -60 |
| max | °C | 80 |

Max altitude

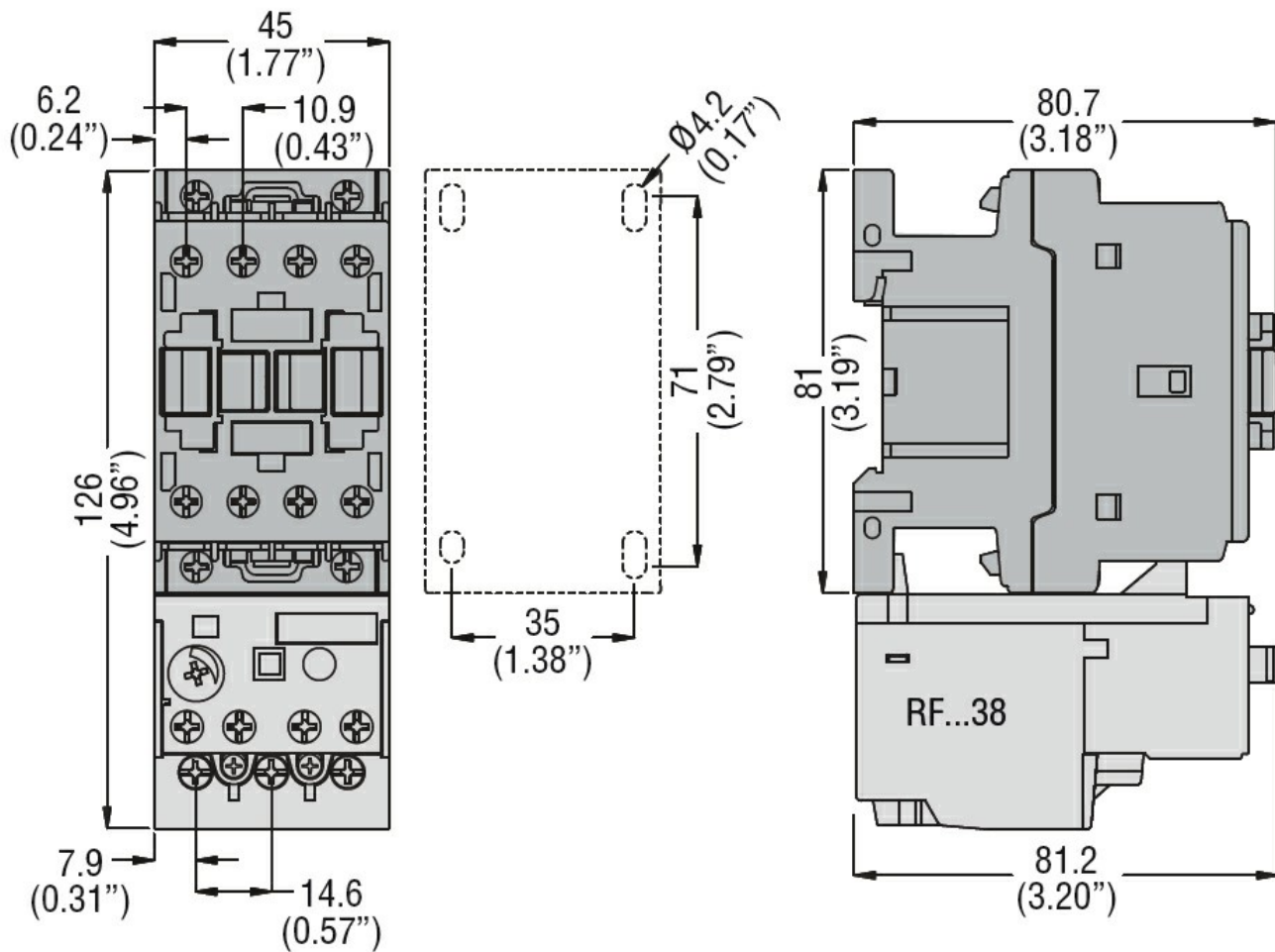
| | |
|---|------|
| m | 3000 |
|---|------|

Resistance & Protection

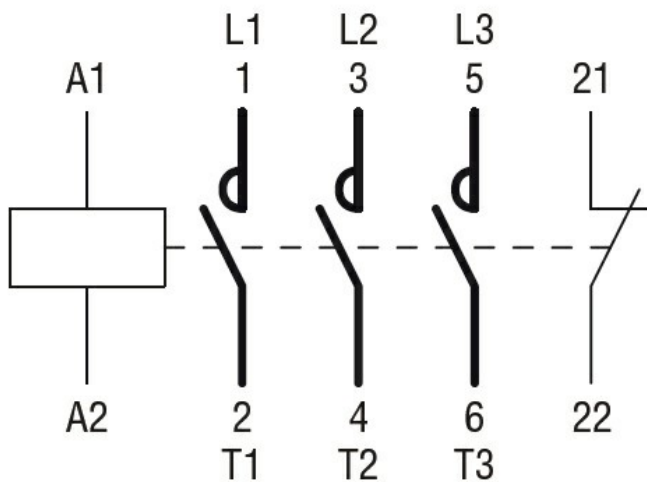
Pollution degree

3

Dimensions



Wiring diagrams



Certifications and compliance

Compliance

- CSA C22.2 n° 60947-1
- CSA C22.2 n° 60947-4-31
- UL 60947-1
- UL 60947-4-1

Certificates

cULus

ETIM classification

ETIM 8.0

EC000066 -
Power contactor,
AC switching