

| | | | | | | |
|--|-------------------------------------|-----------------------------------|---------------------------------|-----------------|---------------|-----|
| Product designation | | | | Power contactor | | |
| Product type designation | | | | DPBF18 | | |
| Contact characteristics | | | | | | |
| Number of poles | | Nr. | 3 | | | |
| Operational frequency | | min | Hz | 25 | | |
| | | max | Hz | 400 | | |
| | | | | | | |
| Mechanical features | | | | | | |
| Operating position | | normal allowable | Vertical plan ±30° | | | |
| | Fixing | Screw / DIN rail 35mm | | | | |
| Weight | | g | 365 | | | |
| Operations | | | | | | |
| Mechanical life | | cycles | 20000000 | | | |
| Electrical life | | cycles | 1600000 | | | |
| Safety related data | | | | | | |
| Performance level B10d according to EN/ISO 13489-1 | | rated load | cycles | 1600000 | | |
| | | mechanical load | cycles | 20000000 | | |
| Mirror contacts according to IEC/EN 609474-4-1 | | | | yes | | |
| EMC compatibility | | | | yes | | |
| AC coil operating | | | | | | |
| Rated AC voltage at 50/60Hz | | V | 24 | | | |
| AC operating voltage | of 50/60Hz coil powered at 50Hz | pick-up | min | %Us | 80 | |
| | | | max | %Us | 110 | |
| | | drop-out | min | %Us | 20 | |
| | | | max | %Us | 55 | |
| | | of 50/60Hz coil powered at 60Hz | pick-up | min | %Us | 85 |
| | | | | max | %Us | 110 |
| | drop-out | | min | %Us | 20 | |
| | | | max | %Us | 55 | |
| | AC average coil consumption at 20°C | | of 50/60Hz coil powered at 50Hz | in-rush | VA | 75 |
| | | | | | holding | VA |
| | | of 50/60Hz coil powered at 60Hz | | in-rush | VA | 70 |
| | | | | | holding | VA |
| of 60Hz coil powered at 60Hz | | | in-rush | VA | 75 | |
| | | | | holding | VA | 9 |
| | | Dissipation at holding ≤20°C 50Hz | | | W | 2.5 |
| | | | | | | |
| Max cycles frequency | | | | | | |
| Mechanical operation | | | | | cycles/h 3600 | |

Operating times

Average time for Us control

in AC

| | | | |
|------------|-----|----|----|
| Closing NO | min | ms | 8 |
| | max | ms | 24 |
| Opening NO | min | ms | 10 |
| | max | ms | 20 |
| Closing NC | min | ms | 14 |
| | max | ms | 28 |
| Opening NC | min | ms | 7 |
| | max | ms | 18 |

UL technical data

Full-load current (FLA) for three-phase AC motor

at 600V A 30

Locked rotor current (LRA)

A 180

Yielded mechanical performance

for single-phase AC motor

110/120V HP 2
230V HP 5

for three-phase AC motor

200/208V HP 7.5
220/230V HP 7.5
460/480V HP 15
575/600V HP 20

General USE

Contactor

AC current A 32

Auxiliary contacts

AC voltage V 600
AC current A 10
DC voltage V 250
DC current A 1

Short-circuit protection fuse, 600V

Standard fault

Short circuit current kA 5
Fuse rating A 100
Fuse class RK5

Contact rating of auxiliary contacts according to UL

A600 - P600

Ambient conditions

Temperature

Operating temperature

min °C -50
max °C 70

Storage temperature

min °C -60
max °C 80

Max altitude

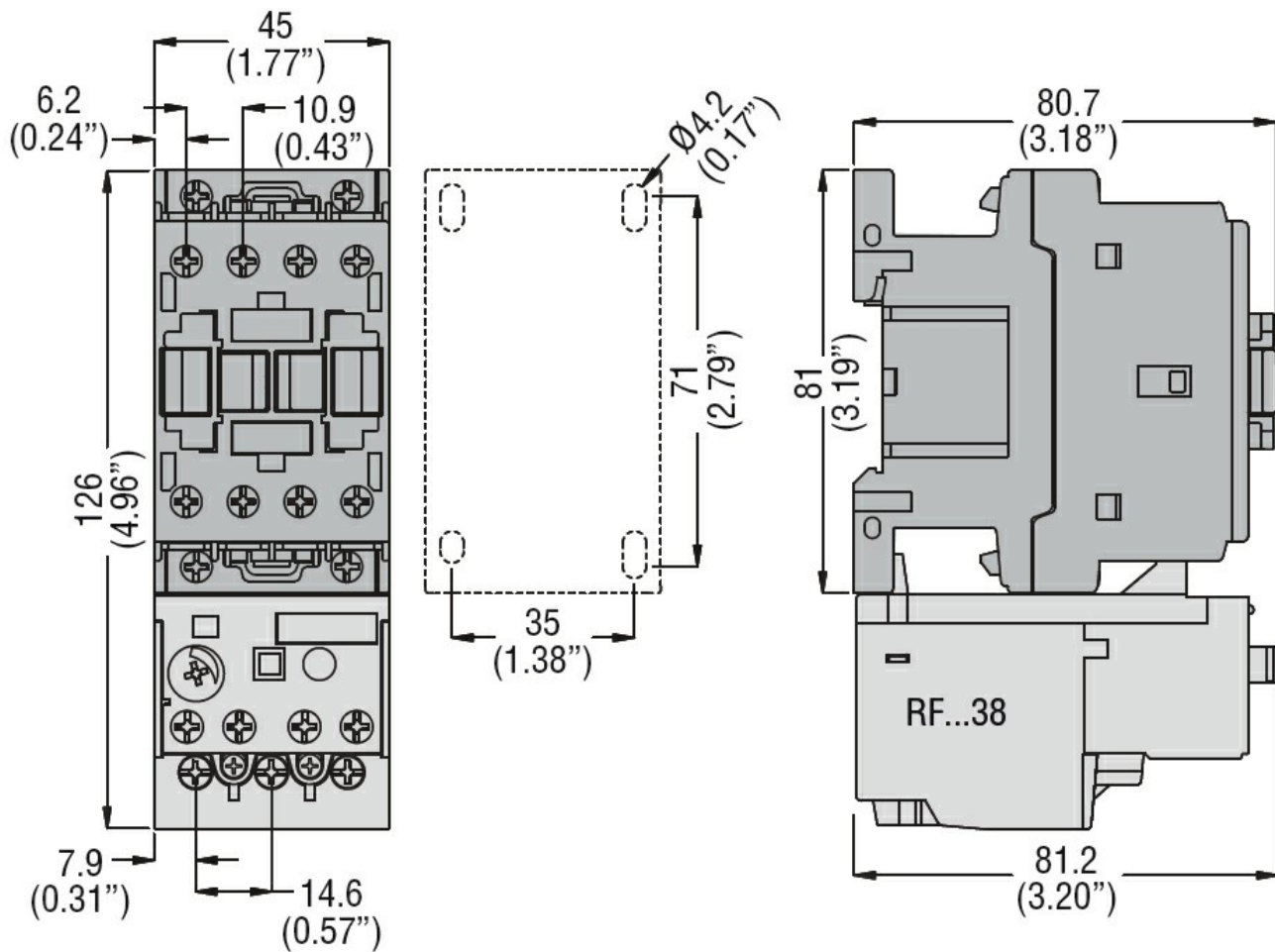
m 3000

Resistance & Protection

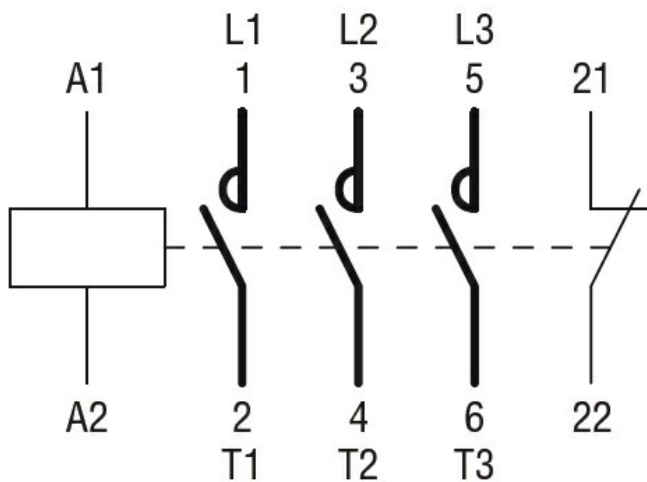
Pollution degree

3

Dimensions



Wiring diagrams



Certifications and compliance

Compliance

- CSA C22.2 n° 60947-1
- CSA C22.2 n° 60947-4-29
- UL 60947-1
- UL 60947-4-1

Certificates

cULus

ETIM classification

ETIM 8.0

EC000066 -
Power contactor,
AC switching