



Product designation Power contactor
Product type designation DPBF12

Contact characteristics

Number of poles	Nr.	3
Operational frequency	min	Hz 25
	max	Hz 400

Mechanical features

Operating position	normal allowable	Vertical plan ±30°
Fixing		Screw / DIN rail 35mm
Weight	g	360

Operations

Mechanical life	cycles	2000000
Electrical life	cycles	200000

Safety related data

Performance level B10d according to EN/ISO 13489-1	rated load mechanical load	cycles	2000000
		cycles	20000000
Mirror contacts according to IEC/EN 60947-4-1			yes
EMC compatibility			yes

AC coil operating

Rated AC voltage at 50/60Hz	V	24
-----------------------------	---	----

AC operating voltage	of 50/60Hz coil powered at 50Hz	pick-up	min	%Us	80
			max	%Us	110
	of 50/60Hz coil powered at 60Hz	pick-up	min	%Us	85
			max	%Us	110
	of 50/60Hz coil powered at 50Hz	drop-out	min	%Us	20
			max	%Us	55
	of 50/60Hz coil powered at 60Hz	drop-out	min	%Us	20
			max	%Us	55

AC average coil consumption at 20°C	of 50/60Hz coil powered at 50Hz	in-rush	VA	75
		holding	VA	9
	of 50/60Hz coil powered at 60Hz			

	in-rush	VA	70
	holding	VA	6.5
of 60Hz coil powered at 60Hz			
	in-rush	VA	75
	holding	VA	9
Dissipation at holding ≤20°C 50Hz		W	2.5

Max cycles frequency

Mechanical operation		cycles/h	3600
----------------------	--	----------	------

Operating times

Average time for Us control			
in AC			
Closing NO	min	ms	8
	max	ms	24
Opening NO	min	ms	10
	max	ms	20
Closing NC	min	ms	14
	max	ms	28
Opening NC	min	ms	7
	max	ms	18

UL technical data

Full-load current (FLA) for three-phase AC motor			
	at 600V	A	25

Locked rotor current (LRA)		A	150
----------------------------	--	---	-----

Yielded mechanical performance			
for single-phase AC motor			
	110/120V	HP	2
	230V	HP	3
for three-phase AC motor			
	200/208V	HP	5
	220/230V	HP	5
	460/480V	HP	10
	575/600V	HP	15

General USE			
Contactor			
	AC current	A	28
Auxiliary contacts			
	AC voltage	V	600
	AC current	A	10
	DC voltage	V	250
	DC current	A	1

Short-circuit protection fuse, 600V			
Standard fault			
	Short circuit current	kA	5
	Fuse rating	A	80
	Fuse class		RK5

Contact rating of auxiliary contacts according to UL			A600 - P600
--	--	--	-------------

Ambient conditions

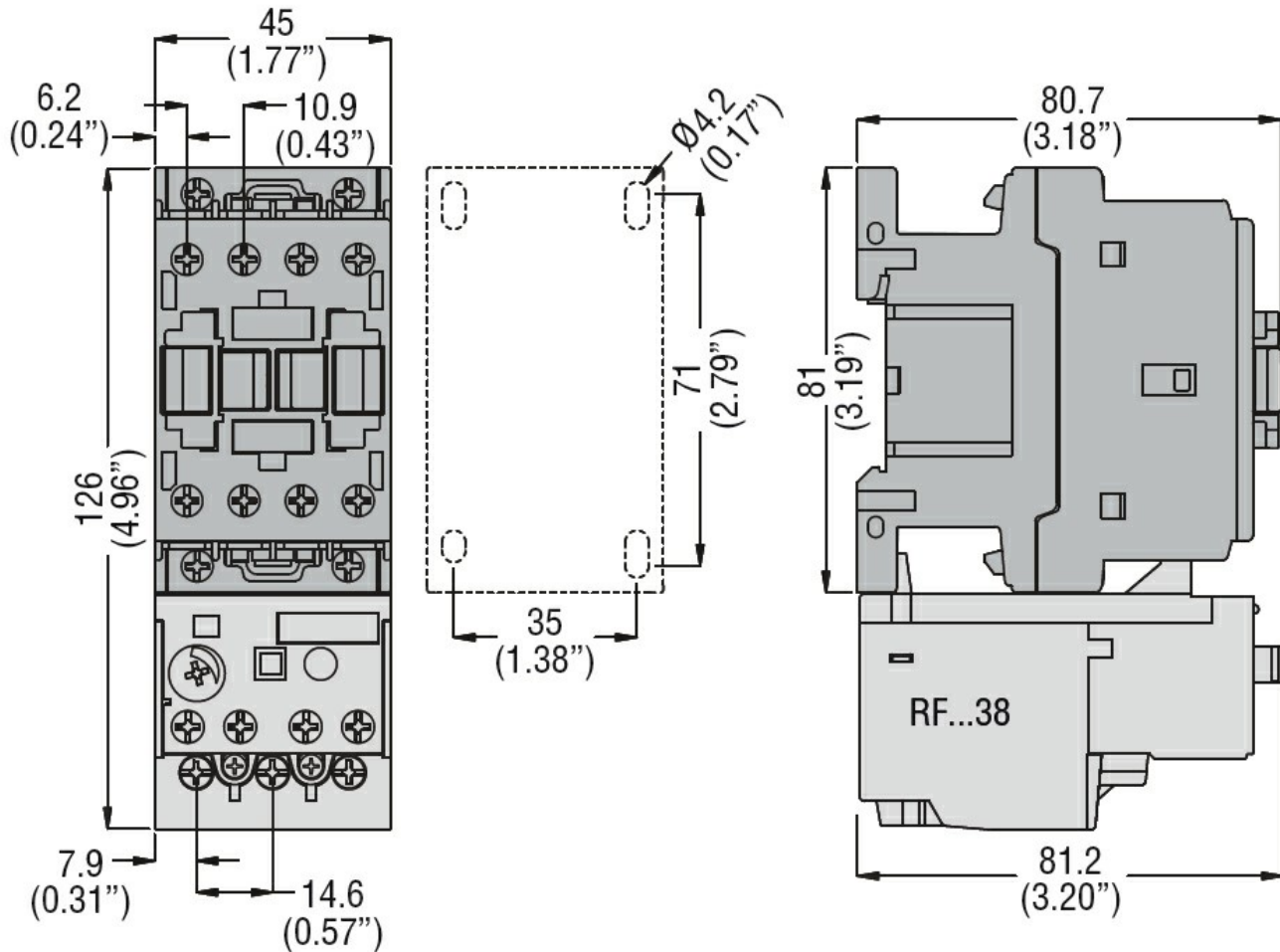
Temperature			
Operating temperature			
	min	°C	-50

	max	°C	70
Storage temperature	min	°C	-60
	max	°C	80
Max altitude	m		3000

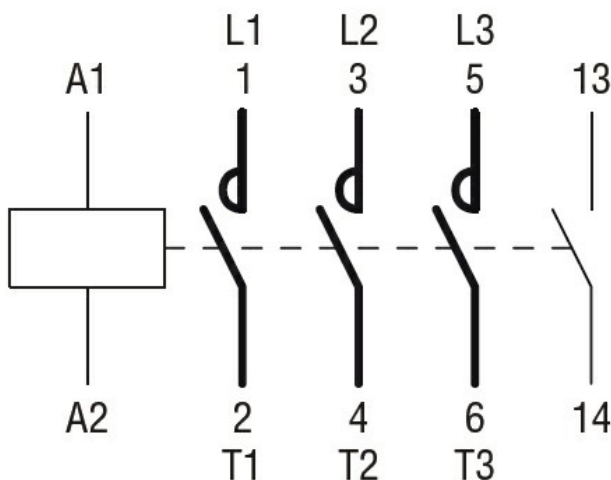
Resistance & Protection

Pollution degree	3
------------------	---

Dimensions



Wiring diagrams



Certifications and compliance

Compliance

CSA C22.2 n° 60947-1

CSA C22.2 n° 60947-4-21

UL 60947-1

UL 60947-4-1

Certificates

cULus

ETIM classification

ETIM 8.0

EC000066 -
Power contactor,
AC switching