

Product designation				Power contactor
Product type designation				DPBF12
<b>Contact characteristics</b>				
Number of poles			Nr.	3
Operational frequency			min	Hz 25
			max	Hz 400
<b>Mechanical features</b>				
Operating position	normal		Vertical plan	
	allowable		±30°	
Fixing				Screw / DIN rail 35mm
Weight				g 490
<b>Operations</b>				
Mechanical life			cycles	20000000
Electrical life			cycles	2000000
<b>Safety related data</b>				
Performance level B10d according to EN/ISO 13489-1	rated load		cycles	2000000
	mechanical load		cycles	20000000
Mirror contacts according to IEC/EN 60947-4-1				yes
EMC compatibility				yes
<b>AC coil operating</b>				
Rated AC voltage at 60Hz			V	230
AC operating voltage	of 50/60Hz coil powered at 50Hz		drop-out	
			max	%Us 0
of 60Hz coil powered at 60Hz	pick-up		min	%Us 80
			max	%Us 110
	drop-out		min	%Us 20
			max	%Us 55
AC average coil consumption at 20°C	of 60Hz coil powered at 60Hz		in-rush	VA 75
			holding	VA 9
Dissipation at holding ≤20°C 50Hz			W	2.5
<b>DC coil operating</b>				
DC rated control voltage			V	24
DC operating voltage	pick-up		min	%Us 70
			max	%Us 125
drop-out			min	%Us 10
			max	%Us 40
Average coil consumption ≤20°C			in-rush	W 5.4
			holding	W 5.4

**Max cycles frequency**

Mechanical operation cycles/h 3600

**Operating times**

Average time for Us control

in AC

Closing NO

min ms 8  
max ms 24

Opening NO

min ms 10  
max ms 20

Closing NC

min ms 14  
max ms 28

Opening NC

min ms 7  
max ms 18

in DC

Closing NO

min ms 54  
max ms 66

Opening NO

min ms 14  
max ms 17

Closing NC

min ms 24  
max ms 30

Opening NC

min ms 47  
max ms 57

**UL technical data**

Full-load current (FLA) for three-phase AC motor

at 600V A 25

Locked rotor current (LRA)

A 150

Yielded mechanical performance

for single-phase AC motor

110/120V HP 2  
230V HP 3

for three-phase AC motor

200/208V HP 5  
220/230V HP 5  
460/480V HP 10  
575/600V HP 15

General USE

Contactor

AC current A 28

Auxiliary contacts

AC voltage V 600  
AC current A 10  
DC voltage V 250  
DC current A 1

Short-circuit protection fuse, 600V

Standard fault

Short circuit current kA 5

Fuse rating	A	80
Fuse class		RK5

Contact rating of auxiliary contacts according to UL A600 - P600

**Ambient conditions**

Temperature

Operating temperature

min	°C	-50
max	°C	70

Storage temperature

min	°C	-60
max	°C	80

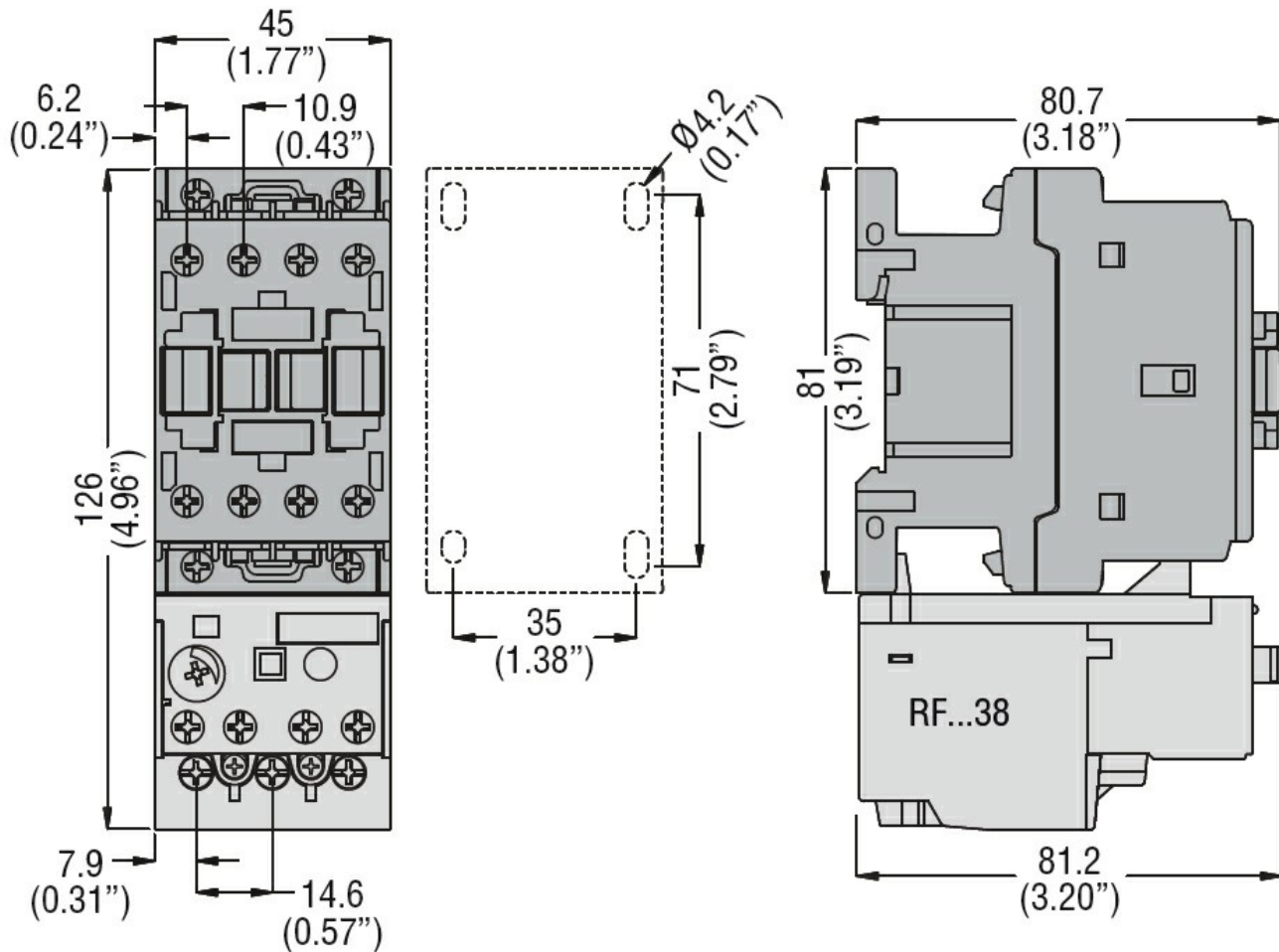
Max altitude m 3000

**Resistance & Protection**

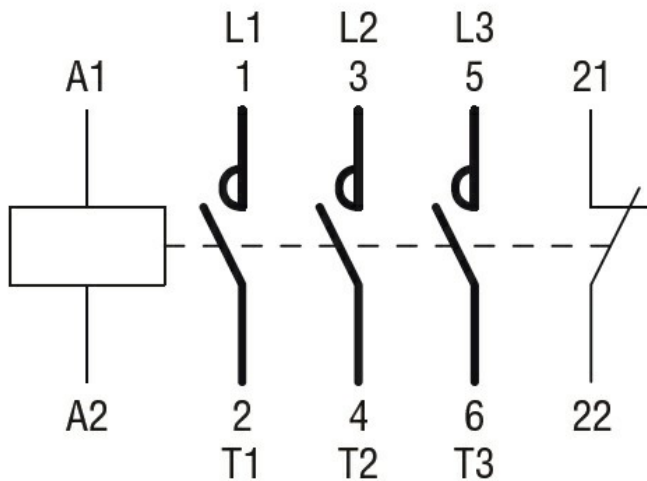
Pollution degree

3

**Dimensions**



**Wiring diagrams**



**Certifications and compliance**

Compliance

CSA C22.2 n° 60947-1

CSA C22.2 n° 60947-4-20

UL 60947-1

UL 60947-4-1

Certificates

cULus

**ETIM classification**

ETIM 8.0

EC000066 -  
 Power contactor,  
 AC switching