



Product designation  
Product type designation

Power contactor  
DPBF09

#### Contact characteristics

Number of poles	Nr.	3
Operational frequency	min	Hz 25
	max	Hz 400

#### Mechanical features

Operating position	normal allowable	Vertical plan $\pm 30^\circ$
Fixing		Screw / DIN rail 35mm
Weight	g	350

#### Operations

Mechanical life	cycles	20000000
Electrical life	cycles	2000000

#### Safety related data

Performance level B10d according to EN/ISO 13489-1	rated load mechanical load	cycles cycles	2000000 20000000
Mirror contacts according to IEC/EN 60947-4-1			yes
EMC compatibility			yes

#### AC coil operating

Rated AC voltage at 50/60Hz	V	415
Rated AC voltage at 60Hz	V	120

AC operating voltage			
of 50/60Hz coil powered at 50Hz			
pick-up	min	%Us	80
	max	%Us	110
drop-out	min	%Us	20
	max	%Us	55
of 50/60Hz coil powered at 60Hz			
pick-up	min	%Us	85
	max	%Us	110
drop-out	min	%Us	20
	max	%Us	55
of 60Hz coil powered at 60Hz			
pick-up	min	%Us	80
	max	%Us	110
drop-out			

		min	%Us	20
		max	%Us	55
AC average coil consumption at 20°C				
of 50/60Hz coil powered at 50Hz				
	in-rush	VA		75
	holding	VA		9
of 50/60Hz coil powered at 60Hz				
	in-rush	VA		70
	holding	VA		6.5
of 60Hz coil powered at 60Hz				
	in-rush	VA		75
	holding	VA		9
Dissipation at holding ≤20°C 50Hz			W	2.5
Max cycles frequency				
Mechanical operation			cycles/h	3600
Operating times				
Average time for Us control				
in AC				
Closing NO				
	min	ms		8
	max	ms		24
Opening NO				
	min	ms		10
	max	ms		20
Closing NC				
	min	ms		14
	max	ms		28
Opening NC				
	min	ms		7
	max	ms		18
UL technical data				
Full-load current (FLA) for three-phase AC motor				
	at 600V	A		20
Locked rotor current (LRA)			A	120
Yielded mechanical performance				
for single-phase AC motor				
	110/120V	HP		1.5
	230V	HP		3
for three-phase AC motor				
	200/208V	HP		5
	220/230V	HP		5
	460/480V	HP		10
	575/600V	HP		15
General USE				
Contactor				
	AC current	A		25
Auxiliary contacts				
	AC voltage	V		600
	AC current	A		10
	DC voltage	V		250
	DC current	A		1
Short-circuit protection fuse, 600V				
Standard fault				
	Short circuit current	kA		5

	Fuse rating	A	70
	Fuse class		RK5
Contact rating of auxiliary contacts according to UL			A600 - P600

#### Ambient conditions

Temperature

Operating temperature

min	°C	-50
max	°C	70

Storage temperature

min	°C	-60
max	°C	80

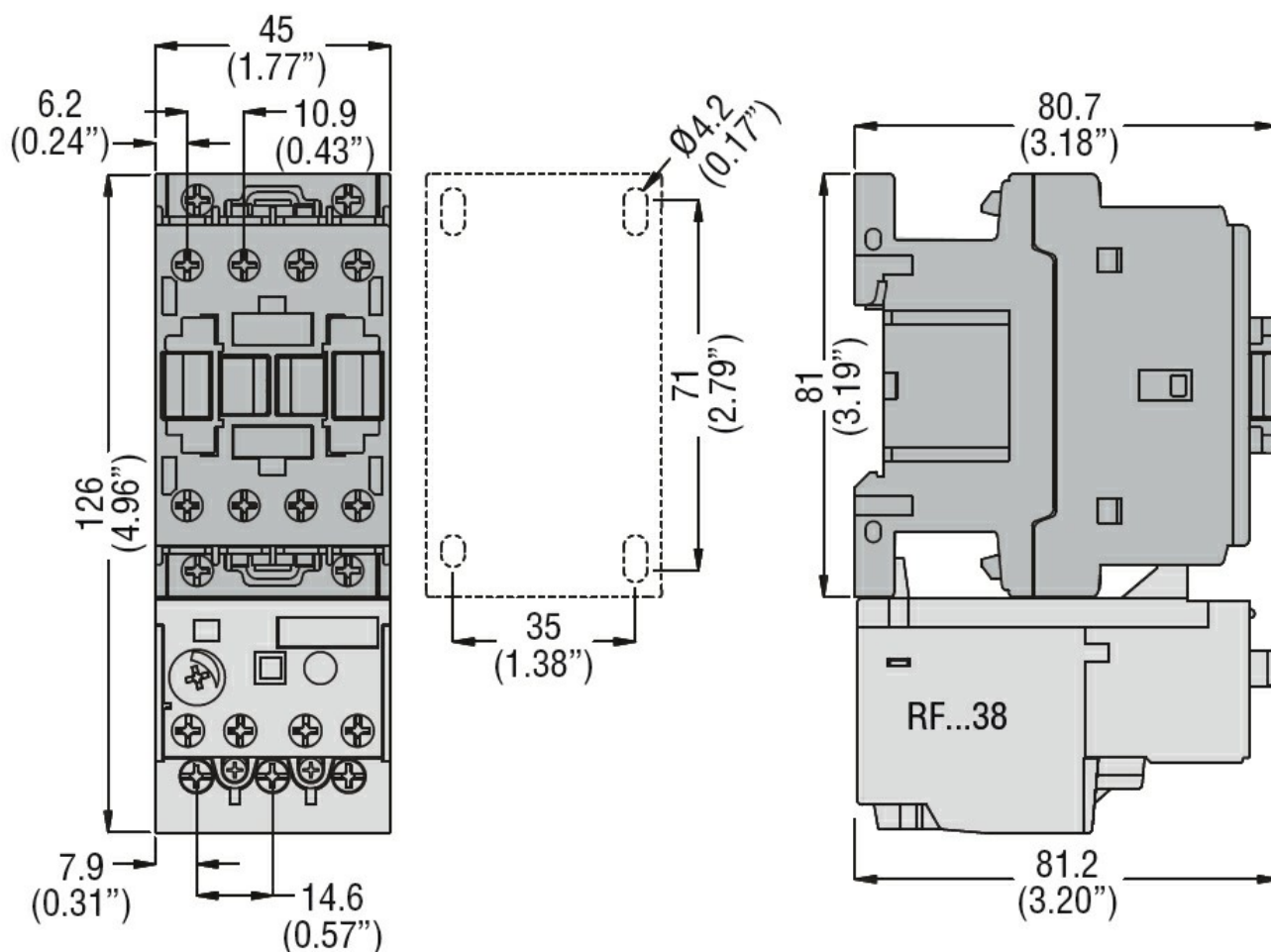
Max altitude	m	3000
--------------	---	------

#### Resistance & Protection

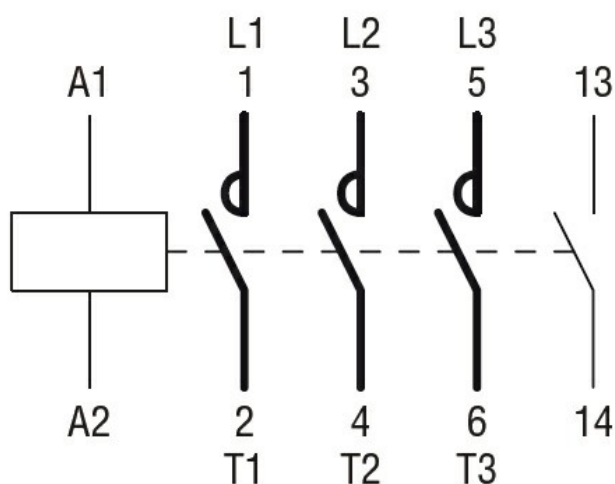
Pollution degree

3

#### Dimensions



#### Wiring diagrams



### Certifications and compliance

#### Compliance

CSA C22.2 n° 60947-1

CSA C22.2 n° 60947-4-9

UL 60947-1

UL 60947-4-1

#### Certificates

cULus

### ETIM classification

ETIM 8.0

EC000066 -  
Power contactor,  
AC switching