



Product designation

Power contactor

Product type designation

BF630

**Contact characteristics**

Number of poles	Nr.	4
Rated insulation voltage $U_i$ IEC/EN	V	1000
Rated impulse withstand voltage $U_{imp}$	kV	8
Operational frequency	min Hz	25
	max Hz	400
IEC Conventional free air thermal current $I_{th}$	A	800
Operational current $I_e$	AC-1 ( $\leq 40^\circ\text{C}$ )	A 800
	AC-1 ( $\leq 55^\circ\text{C}$ )	A 660
	AC-1 ( $\leq 70^\circ\text{C}$ )	A 570
	AC-3 ( $\leq 440\text{V } \leq 55^\circ\text{C}$ )	A 630
	AC-4 (400V)	A 260
Rated operational power AC-3 ( $T \leq 55^\circ\text{C}$ )	230V kW	200
	400V kW	355
	415V kW	355
	440V kW	400
	500V kW	400
	690V kW	500
	1000V kW	250
Rated operational current AC-3 ( $T \leq 55^\circ\text{C}$ )	230V A	630
	400V A	630
	415V A	630
	440V A	630
	500V A	552
	690V A	493
	1000V A	250
Rated operational power AC-1 ( $T \leq 40^\circ\text{C}$ )	230V kW	303
	400V kW	527
	500V kW	579
	690V kW	908
IEC max current $I_e$ in DC1 with $L/R \leq 1\text{ms}$ with 1 poles in series	75V A	800
	110V A	460
IEC max current $I_e$ in DC1 with $L/R \leq 1\text{ms}$ with 2 poles in series	75V A	800
	110V A	800
	220V A	700
IEC max current $I_e$ in DC1 with $L/R \leq 1\text{ms}$ with 3 poles in series		

	75V	A	800
	110V	A	800
	220V	A	800
	330V	A	700
IEC max current Ie in DC1 with L/R ≤ 1ms with 4 poles in series			
	75V	A	800
	110V	A	800
	220V	A	800
IEC max current Ie in DC3-DC5 with L/R ≤ 15ms with 1 poles in series			
	75V	A	800
	110V	A	460
IEC max current Ie in DC3-DC5 with L/R ≤ 15ms with 2 poles in series			
	75V	A	800
	110V	A	800
	220V	A	700
IEC max current Ie in DC3-DC5 with L/R ≤ 15ms with 3 poles in series			
	75V	A	800
	110V	A	800
	220V	A	800
	330V	A	650
IEC max current Ie in DC3-DC5 with L/R ≤ 15ms with 4 poles in series			
	75V	A	800
	110V	A	800
	220V	A	800
	330V	A	700
	460V	A	700
Short-time allowable current for 10s (IEC/EN60947-1)		A	5040
Protection fuse			
	gG (IEC)	A	1000
	aM (IEC)	A	630
Making capacity (RMS value)		A	6300
Breaking capacity at voltage			
	440V	A	6300
	500V	A	4416
	690V	A	3944
Resistance per pole (average value)		mΩ	0.09
Power dissipation per pole (average value)			
	Ith	W	64
	AC-3	W	40
Tightening torque for terminals			
	min	Nm	55
	max	Nm	55
	min	Ibin	486
	max	Ibin	486
Tightening torque for coil terminal			
	min	Nm	0.8
	max	Nm	1
	min	Ibin	7.1
	max	Ibin	8.8
Power terminal protection according to IEC/EN 60529			IP00

### Mechanical features

#### Operating position

normal

Vertical plan

	allowable	±30°	
Fixing		Screw	
Operations			
Mechanical life		cycles	5000000
Electrical life		cycles	600000
Safety related data			
Performance level B10d according to EN/ISO 13489-1			
	rated load	cycles	600000
	mechanical load	cycles	5000000
EMC compatibility			
yes			
AC coil operating			
Rated AC voltage at 50/60Hz, 60Hz			
	min	V	60
	max	V	130
AC operating voltage			
	of 50/60Hz coil powered at 50Hz		
	pick-up		
	min	%Us	80 Us min
	max	%Us	110 Us max
	drop-out		
	max	%Us	≤70 Us min
	of 50/60Hz coil powered at 60Hz		
	pick-up		
	min	%Us	80 Us min
	max	%Us	110 Us max
	drop-out		
	max	%Us	≤70 Us min
AC average coil consumption at 20°C			
	of 50/60Hz coil powered at 50Hz		
	in-rush	VA	390
	holding	VA	12
	of 50/60Hz coil powered at 60Hz		
	in-rush	VA	390
	holding	VA	12
Dissipation at holding ≤20°C 50Hz		W	4
DC coil operating			
DC rated control voltage			
	min	V	60
	max	V	130
DC operating voltage			
	pick-up		
	min	%Us	85 Us min
	max	%Us	110 Us max
	drop-out		
	max	%Us	≤70 Us min
Average coil consumption ≤20°C			
	in-rush	W	390
	holding	W	4
Max cycles frequency			
Mechanical operation		cycles/h	1000
Operating times			
Average time for Us control			
	in AC		

Closing NO

min	ms	95
max	ms	135

Opening NO

min	ms	40
max	ms	53

UL technical data

Rated operational voltage AC (UL)	V	600
-----------------------------------	---	-----

Yielded mechanical performance

for three-phase AC motor

200/208V	HP	200
220/240V	HP	250
460/480V	HP	500
575/600V	HP	600

General USE

Contactor

AC current	A	800
------------	---	-----

Short-circuit protection fuse, 600V

High fault

Short circuit current	kA	100
Fuse rating	A	800
Fuse class		L

Standard fault

Short circuit current	kA	30
Fuse rating	A	1000
Fuse class		L

Ambient conditions

Temperature

Operating temperature

min	°C	-40
max	°C	70

Storage temperature

min	°C	-50
max	°C	80

Max altitude

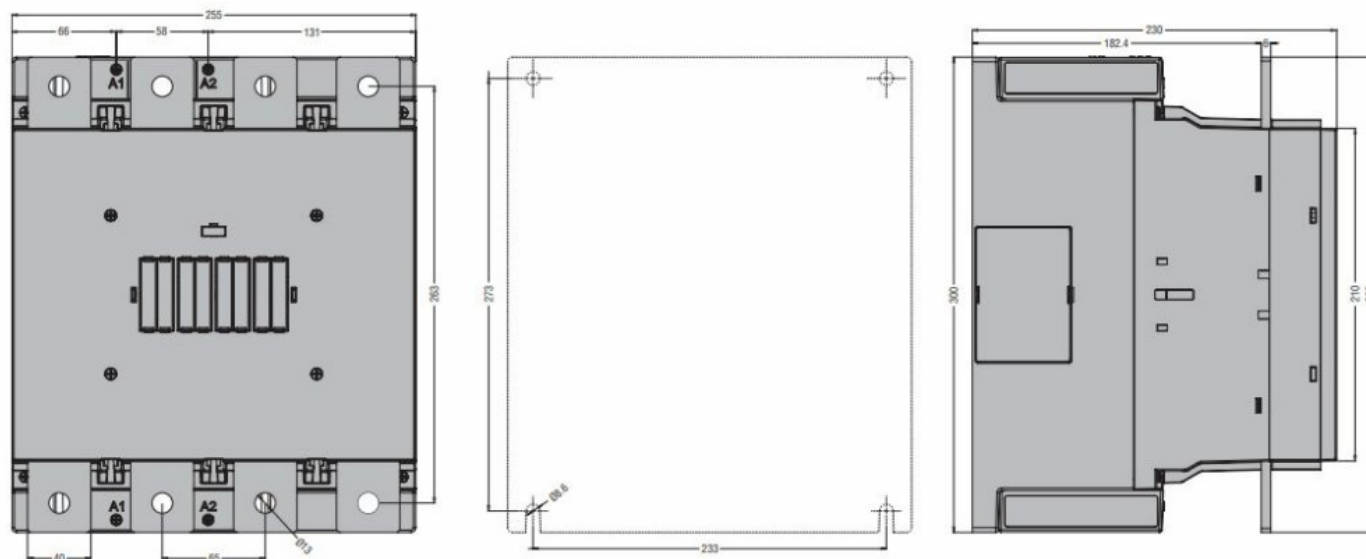
m	3000
---	------

Resistance & Protection

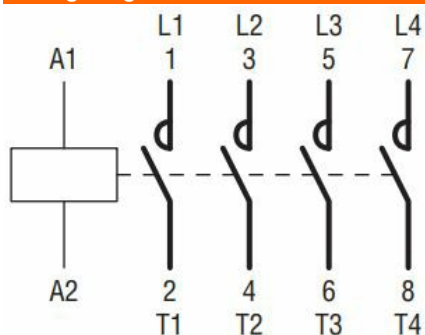
Pollution degree

3

Dimensions



### Wiring diagrams



### Certifications and compliance

#### Compliance

CSA C22.2 n° 60947-1

CSA C22.2 n° 60947-4-1

IEC/EN/BS 60947-1

IEC/EN/BS 60947-4-1

UL 60947-1

UL 60947-4-1

#### Certificates

cULus

### ETIM classification

ETIM 8.0

EC000066 -  
Power contactor,  
AC switching