



Product designation			Power contactor
Product type designation			BF630
Contact characteristics			
Number of poles		Nr.	3
Rated insulation voltage Ui IEC/EN		V	1000
Rated impulse withstand voltage Uimp		kV	8
Operational frequency	min	Hz	25
	max	Hz	400
IEC Conventional free air thermal current Ith		A	800
Operational current Ie	AC-1 (≤40°C)	A	800
	AC-1 (≤55°C)	A	660
	AC-1 (≤70°C)	A	570
	AC-3 (≤440V ≤55°C)	A	630
	AC-4 (400V)	A	260
Rated operational power AC-3 (T≤55°C)	230V	kW	200
	400V	kW	355
	415V	kW	355
	440V	kW	400
	500V	kW	400
	690V	kW	500
	1000V	kW	250
Rated operational current AC-3 (T≤55°C)	230V	A	630
	400V	A	630
	415V	A	630
	440V	A	630
	500V	A	552
	690V	A	493
	1000V	A	250
Rated operational power AC-1 (T≤40°C)	230V	kW	303
	400V	kW	527
	500V	kW	579
	690V	kW	908
IEC max current Ie in DC1 with L/R ≤ 1ms with 1 poles in series	75V	A	800
	110V	A	460
IEC max current Ie in DC1 with L/R ≤ 1ms with 2 poles in series	75V	A	800
	110V	A	800
	220V	A	700
IEC max current Ie in DC1 with L/R ≤ 1ms with 3 poles in series			

	75V	A	800
	110V	A	800
	220V	A	800
	330V	A	700
IEC max current Ie in DC1 with L/R ≤ 1ms with 4 poles in series			
	75V	A	800
	110V	A	800
	220V	A	800
IEC max current Ie in DC3-DC5 with L/R ≤ 15ms with 1 poles in series			
	75V	A	800
	110V	A	460
IEC max current Ie in DC3-DC5 with L/R ≤ 15ms with 2 poles in series			
	75V	A	800
	110V	A	800
	220V	A	700
IEC max current Ie in DC3-DC5 with L/R ≤ 15ms with 3 poles in series			
	75V	A	800
	110V	A	800
	220V	A	800
	330V	A	650
IEC max current Ie in DC3-DC5 with L/R ≤ 15ms with 4 poles in series			
	75V	A	800
	110V	A	800
	220V	A	800
	330V	A	700
	460V	A	700
Short-time allowable current for 10s (IEC/EN60947-1)		A	5040
Protection fuse			
	gG (IEC)	A	1000
	aM (IEC)	A	630
Making capacity (RMS value)		A	6300
Breaking capacity at voltage			
	440V	A	6300
	500V	A	4416
	690V	A	3944
Resistance per pole (average value)		mΩ	0.09
Power dissipation per pole (average value)			
	Ith	W	64
	AC-3	W	40
Tightening torque for terminals			
	min	Nm	55
	max	Nm	55
	min	Ibin	486
	max	Ibin	486
Tightening torque for coil terminal			
	min	Nm	0.8
	max	Nm	1
	min	Ibin	7.1
	max	Ibin	8.8
Power terminal protection according to IEC/EN 60529			IP00

Mechanical features

Operating position

normal

Vertical plan

	allowable	±30°	
Fixing		Screw	
Operations			
Mechanical life		cycles	5000000
Electrical life		cycles	600000
Safety related data			
Performance level B10d according to EN/ISO 13489-1			
	rated load	cycles	600000
	mechanical load	cycles	5000000
EMC compatibility		yes	
AC coil operating			
AC average coil consumption at 20°C			
	of 50/60Hz coil powered at 50Hz		
	in-rush	VA	390
	holding	VA	12
	of 50/60Hz coil powered at 60Hz		
	in-rush	VA	390
	holding	VA	12
Dissipation at holding ≤20°C 50Hz		W	4
DC coil operating			
DC rated control voltage			
	min	V	24
	max	V	48
DC operating voltage			
	pick-up		
	min	%Us	85 Us min
	max	%Us	110 Us max
	drop-out		
	max	%Us	≤70 Us min
Average coil consumption ≤20°C			
	in-rush	W	390
	holding	W	4
Max cycles frequency			
Mechanical operation		cycles/h	1000
Operating times			
Average time for Us control			
	in AC		
	Closing NO		
	min	ms	95
	max	ms	135
	Opening NO		
	min	ms	40
	max	ms	53
UL technical data			
Rated operational voltage AC (UL)		V	600
Yielded mechanical performance			
	for three-phase AC motor		
	200/208V	HP	200
	220/240V	HP	250
	460/480V	HP	500
	575/600V	HP	600
General USE			
	Contactor		

	AC current	A	800
Short-circuit protection fuse, 600V			
High fault			
	Short circuit current	kA	100
	Fuse rating	A	800
	Fuse class		L

Standard fault

Short circuit current	kA	30
Fuse rating	A	1000
Fuse class		L

Ambient conditions

Temperature

Operating temperature

min	°C	-40
max	°C	70

Storage temperature

min	°C	-50
max	°C	80

Max altitude

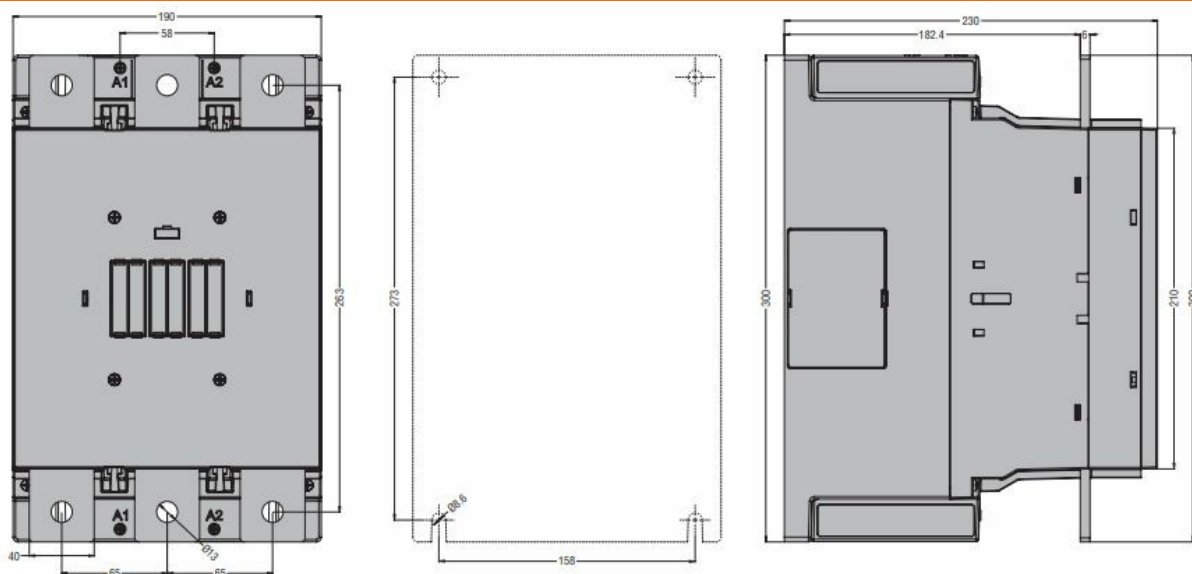
m	3000
---	------

Resistance & Protection

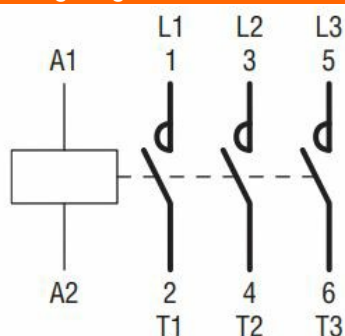
Pollution degree

3

Dimensions



Wiring diagrams



Certifications and compliance

Compliance

CSA C22.2 n° 60947-1

CSA C22.2 n° 60947-4-1

IEC/EN/BS 60947-1

IEC/EN/BS 60947-4-1

UL 60947-1

UL 60947-4-1

Certificates

cULus

ETIM classification

ETIM 8.0

EC000066 -
Power contactor,
AC switching