



Product designation				Auxiliary contactor
Product type designation				BGF00
<b>Contact characteristics</b>				
Number of poles	Nr.			4
Rated insulation voltage $U_i$ IEC/EN	V			690
Rated impulse withstand voltage $U_{imp}$	kV			6
Operational frequency	min	Hz	25	
	max	Hz	400	
IEC Conventional free air thermal current $I_{th}$	A			10
Short-time allowable current for 10s (IEC/EN60947-1)	A			0
Protection fuse	gG (IEC)	A	16	
	Tightening torque for terminals			
	min	Nm	0.8	
	max	Nm	1	
	min	I <sub>bin</sub>	9	
	max	I <sub>bin</sub>	9	
Tightening torque for coil terminal				
	min	Nm	0.8	
	max	Nm	1	
	min	I <sub>bin</sub>	9	
	max	I <sub>bin</sub>	9	
Max number of wires simultaneously connectable	Nr.			2
Conductor section				
AWG/Kcmil	max		12	
Flexible w/o lug conductor section				
	min	mm <sup>2</sup>	0.75	
	max	mm <sup>2</sup>	2.5	
Flexible c/w lug conductor section				
	min	mm <sup>2</sup>	1.5	
	max	mm <sup>2</sup>	2.5	
Flexible with insulated spade lug conductor section				
	min	mm <sup>2</sup>	1.5	
	max	mm <sup>2</sup>	2.5	
Power terminal protection according to IEC/EN 60529				IP20 when properly wired
<b>Mechanical features</b>				
Operating position				
	normal allowable			Vertical plan ±30°
Fixing				Screw / DIN rail 35mm

Weight		g	222
Conductor section	AWG/kcmil conductor section		
		max	12
<b>Auxiliary contact characteristics</b>			
Thermal current I <sub>th</sub>		A	10
IEC/EN 60947-5-1 designation			A600 - Q600
Operating current AC15			
		230V	A 3
		400V	A 1.9
		500V	A 1.4
Operating current DC12			
		110V	A 2.9
Operating current DC13			
		24V	A 2.9
		48V	A 1.4
		60V	A 1.1
		125V	A 0.3
		220V	A 0.1
		600V	A 0.6
<b>Operations</b>			
Mechanical life		cycles	20000000
<b>Safety related data</b>			
Performance level B10d according to EN/ISO 13489-1		mechanical load	cycles 20000000
Mirror contacts according to IEC/EN 60947-4-1			YES
EMC compatibility			yes
<b>DC coil operating</b>			
DC rated control voltage		V	24
DC operating voltage			
	pick-up		
		min	%Us 75
		max	%Us 115
	drop-out		
		min	%Us 10
		max	%Us 25
Average coil consumption ≤20°C			
		in-rush	W 2.3
		holding	W 2.3
<b>Max cycles frequency</b>			
Mechanical operation		cycles/h	3600
<b>Operating times</b>			
Average time for U <sub>s</sub> control			
	in AC		
	Closing NO		
		min	ms 12
		max	ms 21
	Opening NO		
		min	ms 9
		max	ms 18
	Closing NC		
		min	ms 17
		max	ms 26

	Opening NC	min	ms	7
		max	ms	17
in DC				
	Closing NO	min	ms	18
		max	ms	25
	Opening NO	min	ms	2
		max	ms	3
	Closing NC	min	ms	3
		max	ms	5
	Opening NC	min	ms	11
		max	ms	17

**UL technical data**

Contact rating of auxiliary contacts according to UL A600 - Q600

**Ambient conditions**

Temperature

Operating temperature

min	°C	-50
max	°C	+70

Storage temperature

min	°C	-60
max	°C	+80

Max altitude

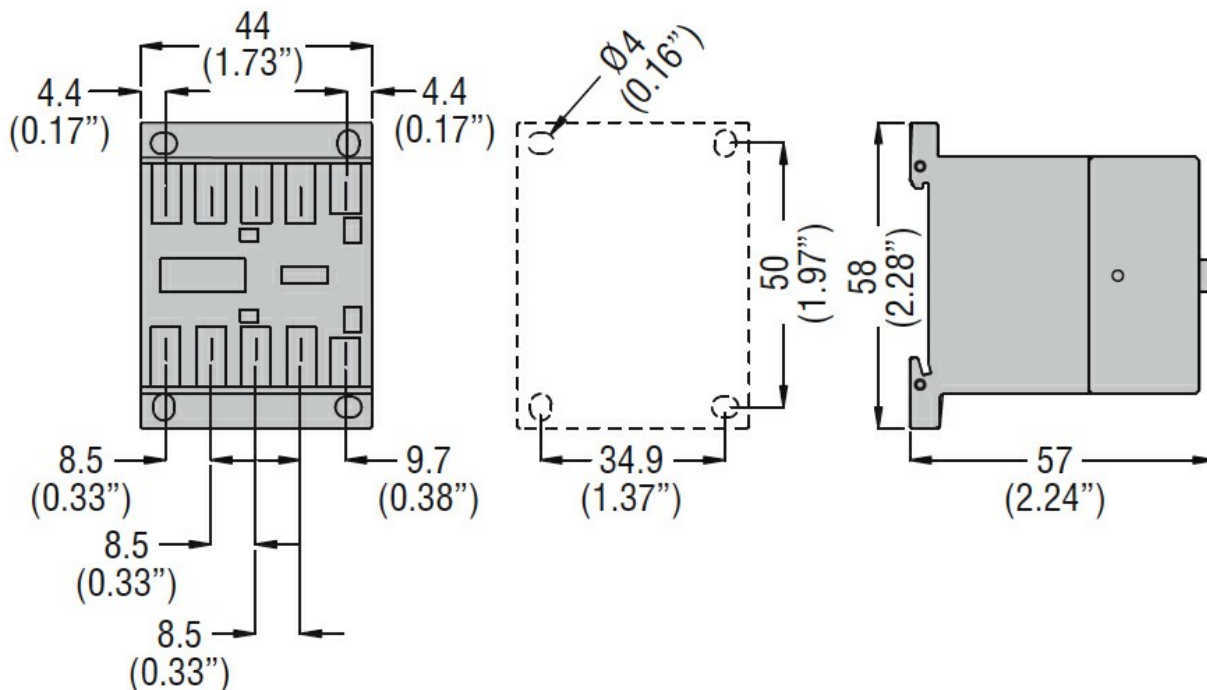
m 3000

**Resistance & Protection**

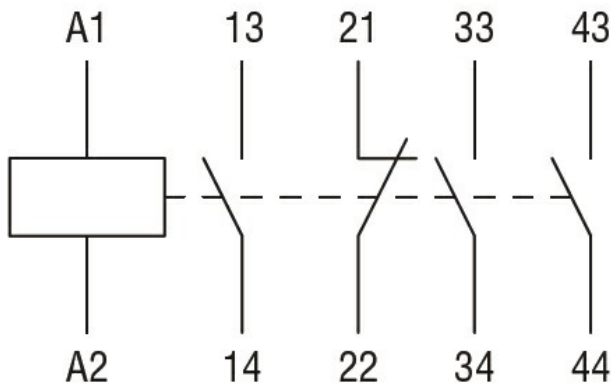
Pollution degree

3

**Dimensions**



**Wiring diagrams**



### Certifications and compliance

#### Compliance

CSA C22.2 n° 60947-1

CSA C22.2 n° 60947-5-1

IEC/EN 60947-1

IEC/EN 60947-5-1

UL 60947-1

UL 60947-5-1

#### Certificates

CCC

cULus

EAC

### ETIM classification

ETIM 8.0

EC000196 -  
Contactor relay