



Auxiliary  
contactor  
BGF00

Product designation

Product type designation

**Contact characteristics**

Number of poles	Nr.	4
Rated insulation voltage $U_i$ IEC/EN	V	690
Rated impulse withstand voltage $U_{imp}$	kV	6
Operational frequency	min	Hz 25
	max	Hz 400
IEC Conventional free air thermal current $I_{th}$	A	10
Short-time allowable current for 10s (IEC/EN60947-1)	A	0
Protection fuse	gG (IEC)	A 16
Tightening torque for terminals	min	Nm 0.8
	max	Nm 1
	min	Ibin 9
	max	Ibin 9
Tightening torque for coil terminal	min	Nm 0.8
	max	Nm 1
	min	Ibin 9
	max	Ibin 9
Max number of wires simultaneously connectable	Nr.	2
Conductor section	AWG/Kcmil	
	max	12
Flexible w/o lug conductor section	min	mm <sup>2</sup> 0.75
	max	mm <sup>2</sup> 2.5
Flexible c/w lug conductor section	min	mm <sup>2</sup> 1.5
	max	mm <sup>2</sup> 2.5
Flexible with insulated spade lug conductor section	min	mm <sup>2</sup> 1.5
	max	mm <sup>2</sup> 2.5
Power terminal protection according to IEC/EN 60529		IP20 when properly wired

**Mechanical features**

Operating position

normal  
allowable      Vertical plan  
±30°

Fixing

Screw / DIN rail  
35mm

Weight

g 225

Conductor section

AWG/kcmil conductor section

max 12

**Auxiliary contact characteristics**

Thermal current I<sub>th</sub> A 10

IEC/EN 60947-5-1 designation A600 - Q600

Operating current AC15

230V	A	3
400V	A	1.9
500V	A	1.4

Operating current DC12

110V	A	2.9
------	---	-----

Operating current DC13

24V	A	2.9
48V	A	1.4
60V	A	1.1
125V	A	0.3
220V	A	0.1
600V	A	0.6

**Operations**

Mechanical life cycles 20000000

**Safety related data**

Performance level B10d according to EN/ISO 13489-1

mechanical load cycles 20000000

Mirror contacts according to IEC/EN 60947-4-1

YES

EMC compatibility

yes

**DC coil operating**

DC rated control voltage V 48

DC operating voltage

pick-up

min	%Us	75
max	%Us	115

drop-out

min	%Us	10
max	%Us	25

Average coil consumption ≤20°C

in-rush	W	3.2
holding	W	3.2

**Max cycles frequency**

Mechanical operation cycles/h 3600

**Operating times**

Average time for U<sub>s</sub> control

in AC

Closing NO

min	ms	12
max	ms	21

Opening NO

min	ms	9
max	ms	18

Closing NC

min	ms	17
max	ms	26

Opening NC

		min	ms	7
		max	ms	17
in DC				
	Closing NO	min	ms	18
		max	ms	25
	Opening NO	min	ms	2
		max	ms	3
	Closing NC	min	ms	3
		max	ms	5
	Opening NC	min	ms	11
		max	ms	17

**UL technical data**

Contact rating of auxiliary contacts according to UL A600 - Q600

**Ambient conditions**

Temperature

Operating temperature

min	°C	-50
max	°C	+70

Storage temperature

min	°C	-60
max	°C	+80

Max altitude

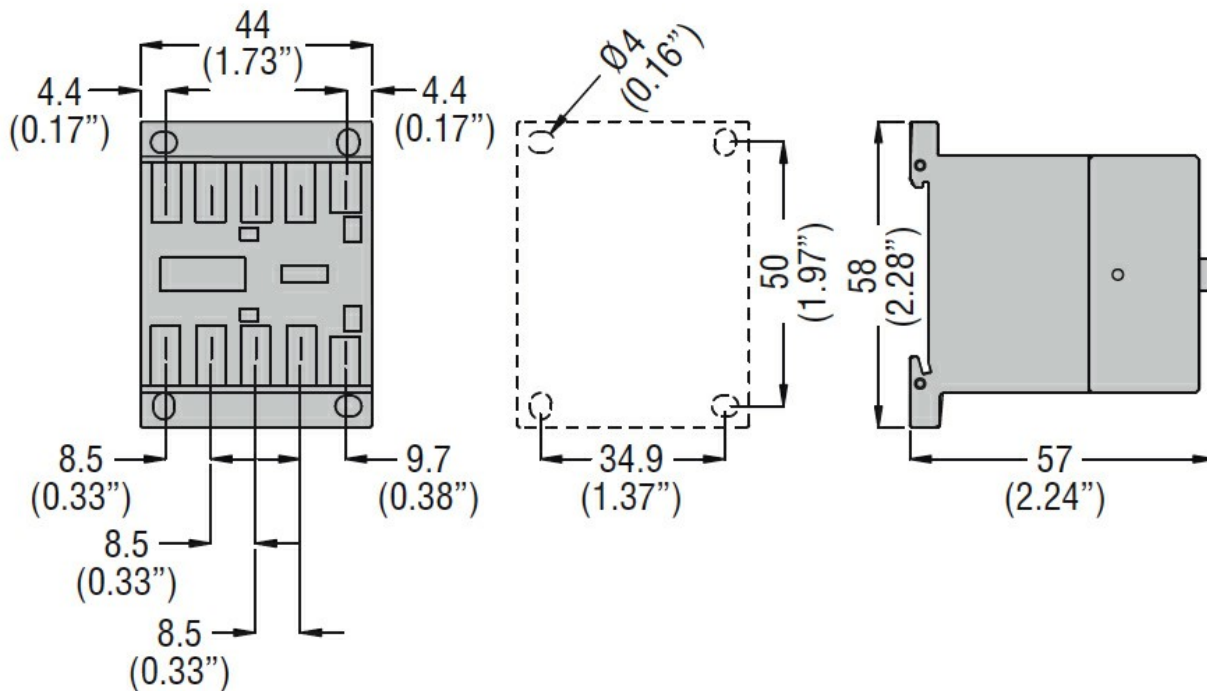
m 3000

**Resistance & Protection**

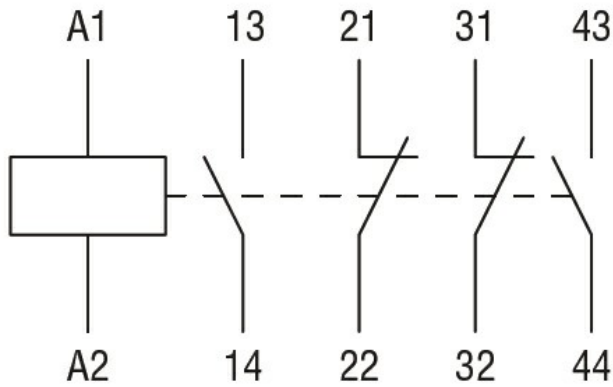
Pollution degree

3

**Dimensions**



**Wiring diagrams**



**Certifications and compliance**

Compliance

CSA C22.2 n° 60947-1

CSA C22.2 n° 60947-5-1

IEC/EN 60947-1

IEC/EN 60947-5-1

UL 60947-1

UL 60947-5-1

Certificates

CCC

cULus

EAC

**ETIM classification**

ETIM 8.0

EC000196 -  
Contactor relay