



| | | | | |
|---|---------------------------------|-----------------|------------------------------|--------------------------|
| Product designation | | | | Auxiliary contactor |
| Product type designation | | | | BG00 |
| Contact characteristics | | | | |
| Number of poles | Nr. | | | 4 |
| Rated insulation voltage U_i IEC/EN | V | | | 690 |
| Rated impulse withstand voltage U_{imp} | kV | | | 6 |
| Operational frequency | min | Hz | 25 | |
| | max | Hz | 400 | |
| IEC Conventional free air thermal current I_{th} | A | | | 10 |
| Protection fuse | gG (IEC) | | A | 16 |
| | Tightening torque for terminals | | | |
| | min | Nm | 0.8 | |
| | max | Nm | 1 | |
| | min | lbin | 9 | |
| | max | lbin | 9 | |
| Tightening torque for coil terminal | min | Nm | 0.8 | |
| | max | Nm | 1 | |
| | min | lbin | 9 | |
| | max | lbin | 9 | |
| Max number of wires simultaneously connectable | Nr. | | | 2 |
| Conductor section | AWG/Kcmil | | | |
| | | | max | 12 |
| Flexible w/o lug conductor section | min | mm ² | 0.75 | |
| | max | mm ² | 2.5 | |
| Flexible c/w lug conductor section | min | mm ² | 1.5 | |
| | max | mm ² | 2.5 | |
| Flexible with insulated spade lug conductor section | min | mm ² | 1.5 | |
| | max | mm ² | 2.5 | |
| Power terminal protection according to IEC/EN 60529 | | | | IP20 when properly wired |
| Mechanical features | | | | |
| Operating position | normal allowable | | Vertical plan $\pm 30^\circ$ | |
| | Fixing | | | Screw / DIN rail 35mm |
| Weight | | | g | 222 |

| | | | | | |
|--|-----------------------------|--|--|-----------------|-----------------|
| Conductor section | AWG/kcmil conductor section | | | max | 12 |
| Auxiliary contact characteristics | | | | | |
| Thermal current I _{th} | | | | A | 10 |
| IEC/EN 60947-5-1 designation | | | | A600 - Q600 | |
| Operating current AC15 | | | | 230V | A 3 |
| | | | | 400V | A 1.9 |
| | | | | 500V | A 1.4 |
| Operating current DC12 | | | | 110V | A 2.9 |
| Operating current DC13 | | | | 24V | A 2.9 |
| | | | | 48V | A 1.4 |
| | | | | 60V | A 1.2 |
| | | | | 110V | A 0.6 |
| | | | | 125V | A 0.55 |
| | | | | 220V | A 0.3 |
| | | | | 600V | A 0.1 |
| Operations | | | | | |
| Mechanical life | | | | cycles | 20000000 |
| Safety related data | | | | | |
| Performance level B10d according to EN/ISO 13489-1 | | | | mechanical load | cycles 20000000 |
| Mirror contacts according to IEC/EN 60947-4-1 | | | | YES | |
| EMC compatibility | | | | yes | |
| DC coil operating | | | | | |
| DC rated control voltage | | | | V | 48 |
| DC operating voltage | | | | | |
| | pick-up | | | min | %Us 75 |
| | | | | max | %Us 115 |
| | drop-out | | | min | %Us 10 |
| | | | | max | %Us 20 |
| Average coil consumption ≤20°C | | | | in-rush | W 3.2 |
| | | | | holding | W 3.2 |
| Max cycles frequency | | | | | |
| Mechanical operation | | | | cycles/h | 3600 |
| Operating times | | | | | |
| Average time for U _s control | in AC | | | | |
| | Closing NO | | | min | ms 12 |
| | | | | max | ms 21 |
| | Opening NO | | | min | ms 9 |
| | | | | max | ms 18 |
| | Closing NC | | | min | ms 17 |
| | | | | max | ms 26 |

| | | | |
|------------|-----|----|----|
| Opening NC | min | ms | 7 |
| | max | ms | 17 |
| in DC | | | |
| Closing NO | min | ms | 18 |
| | max | ms | 25 |
| Opening NO | min | ms | 2 |
| | max | ms | 3 |
| Closing NC | min | ms | 3 |
| | max | ms | 5 |
| Opening NC | min | ms | 11 |
| | max | ms | 17 |

UL technical data

General USE

| | | | |
|--|------------|---|-------------|
| Contactor | AC current | A | 10 |
| Contact rating of auxiliary contacts according to UL | | | A600 - Q600 |

Ambient conditions

Temperature

| | | | |
|-----------------------|-----|----|-----|
| Operating temperature | min | °C | -50 |
| | max | °C | +70 |
| Storage temperature | min | °C | -60 |
| | max | °C | +80 |

Max altitude

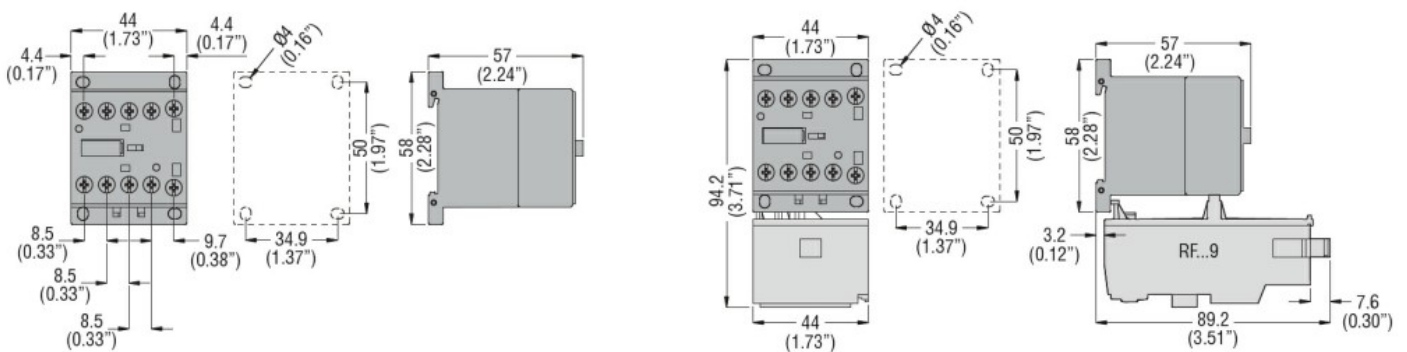
m 3000

Resistance & Protection

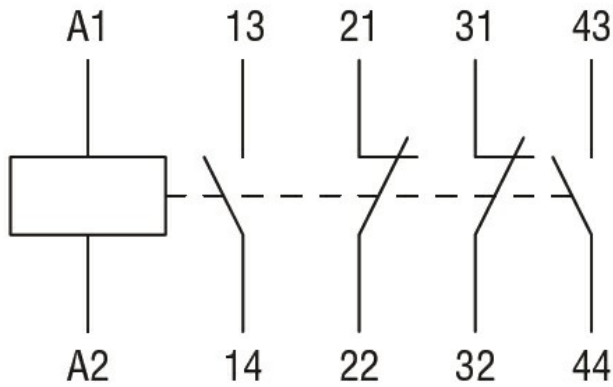
Pollution degree

3

Dimensions



Wiring diagrams



Certifications and compliance

Compliance

CSA C22.2 n° 60947-1

CSA C22.2 n° 60947-5-1

IEC/EN 60947-1

IEC/EN 60947-5-1

UL 60947-1

UL 60947-5-1

Certificates

cULus

EAC

ETIM classification

ETIM 8.0

EC000196 -
 Contactor relay